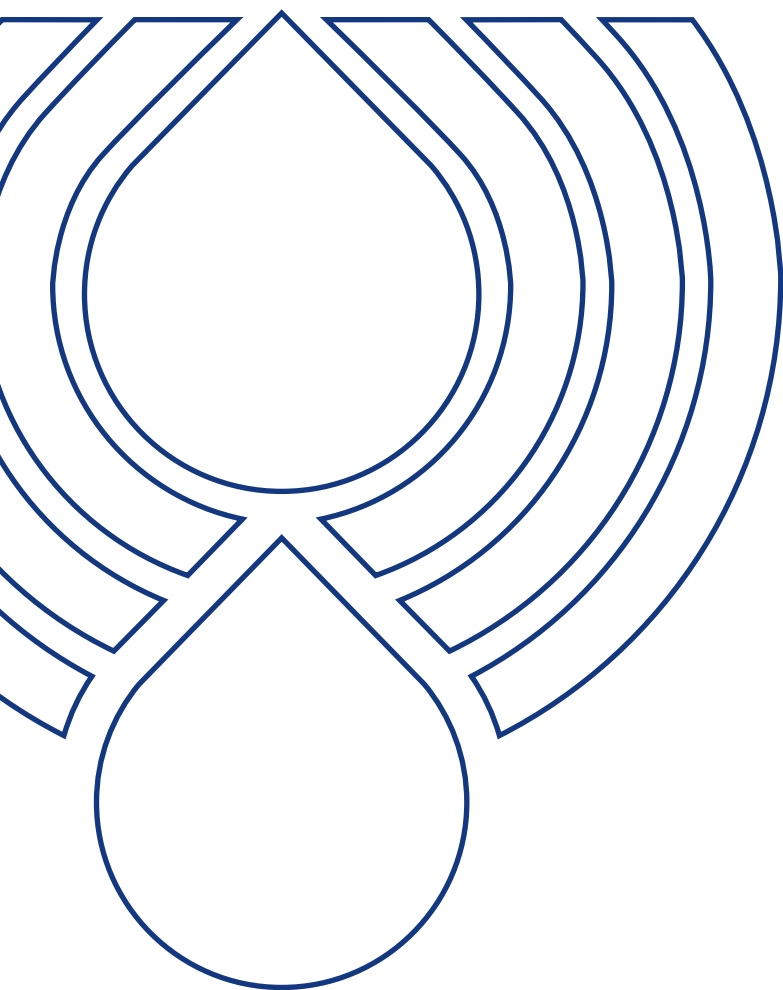


TANK ACCESSORIES



PASSION TO PERFORM





A WORLDWIDE LEADER IN THE FIELD OF HYDRAULIC FILTRATION EQUIPMENT.

Our company started life in 1964, when Bruno Pasotto decided to attempt to cater for the requests of a market still to be fully explored, with the study, design, development, production and marketing of a vast range of filters for hydraulic equipment, capable of satisfying the needs of manufacturers in all sectors. The quality of our products, our extreme competitiveness compared with major international producers and our constant activities of research, design and development has made us a worldwide leader in the field of hydraulic circuit filtering. Present for over 50 years in the market, we have played a truly decisive role in defining our sector, and by now we are a group capable of controlling our entire chain of production, monitoring all manufacturing processes to guarantee superior quality standards and to provide concrete solutions for the rapidly evolving needs of customers and the market.

MARKET LEADER



Our work is based on a skillful interaction between advanced technology and fine workmanship, **customizing products according to specific market requests**, focusing strongly on innovation and quality, and following every step in the manufacturing of both standard and special products, fully respecting customer expectations.



Our customer-oriented philosophy, which enables us to satisfy all customer requests **rapidly and with personalized products**, makes us a **dynamic and flexible enterprise**. The possibility of constantly controlling and monitoring the entire production process is essential to allow us to guarantee the quality of our products.

WORLDWIDE PRESENCE

Our foreign Branches enable us to offer a diversified range of products that allow us to successfully face the aggressive challenge of international competition, and also to maintain a stable presence at a local level.

The Group boasts **9** business branches



TECHNOLOGY

Our constant **quest for excellence in quality and technological innovation** allows us to offer only the best solutions and services for applications in many fields, including general industry, test rigs, lubrication, heavy engineering, renewable energies, naval engineering, offshore engineering, aviation systems, emerging technologies and mobile plant (i.e. tractors, excavators, concrete pumps, platforms).



AND PRODUCTION

Our high level of technological expertise means **we can rely entirely on our own resources, without resorting to external providers.** This in turn enables us to satisfy a growing number of customer requests, also exploiting our constantly updated range of machines and equipment, featuring **fully-automated workstations** capable of **24-hour production.**





SUCTION FILTERS

Flow rates
up to 875 l/min

Mounting:
- Tank immersed
- In-Line
- In tank with
shut off valve
- In tank
with flooded suction

RETURN FILTERS

Flow rates
up to 3000 l/min

Pressure
up to 20 bar

Mounting:
- In-Line
- Tank top
- In single
and duplex designs

RETURN / SUCTION FILTERS

Flow rates
up to 300 l/min

Pressure
up to 80 bar

Mounting:
- In-Line
- Tank top

SPIN-ON FILTERS

Flow rates
up to 365 l/min

Pressure
up to 35 bar

Mounting:
- In-Line
- Tank top

LOW & MEDIUM PRESSURE FILTERS

Flow rates
up to 3000 l/min

Pressure
up to 80 bar

Mounting:
- In-Line
- Parallel manifold version
- In single
and duplex designs

HIGH PRESSURE FILTERS

Flow rates
up to 750 l/min

Pressure from 110 bar
up to 560 bar

Mounting:
- In-Line
- Manifold
- In single
and duplex designs

PRODUCT RANGE

MP Filtri can offer a vast and articulated range of products for the global market, suitable for all industrial sectors using hydraulic equipment.

This includes filters (suction, return, return/suction, spin-on, pressure, stainless steel pressure) and structural components (motor/pump bell-housings, transmission couplings, damping rings, foot brackets, aluminium tanks, cleaning covers).

We can provide all the skills and solutions required by the modern hydraulics industry to monitor contamination levels and other fluid conditions.

Mobile filtration units and a full range of accessories allow us to supply everything necessary for a complete service in the hydraulic circuits.



STAINLESS STEEL HIGH PRESSURE FILTERS

Flow rates up to 125 l/min
Pressure from 320 bar
up to 1000 bar

Mounting:

- In-Line
- Manifold
- In single and duplex designs



CONTAMINATION MONITORING PRODUCTS

- Off-line, in-line particle counters
- Off-line bottle sampling products
- Fully calibrated using relevant ISO standards
- A wide range of variants to support fluid types and communication protocols



MOBILE FILTRATION UNITS

Flow rates from 15 l/min
up to 200 l/min



POWER TRANSMISSION PRODUCTS

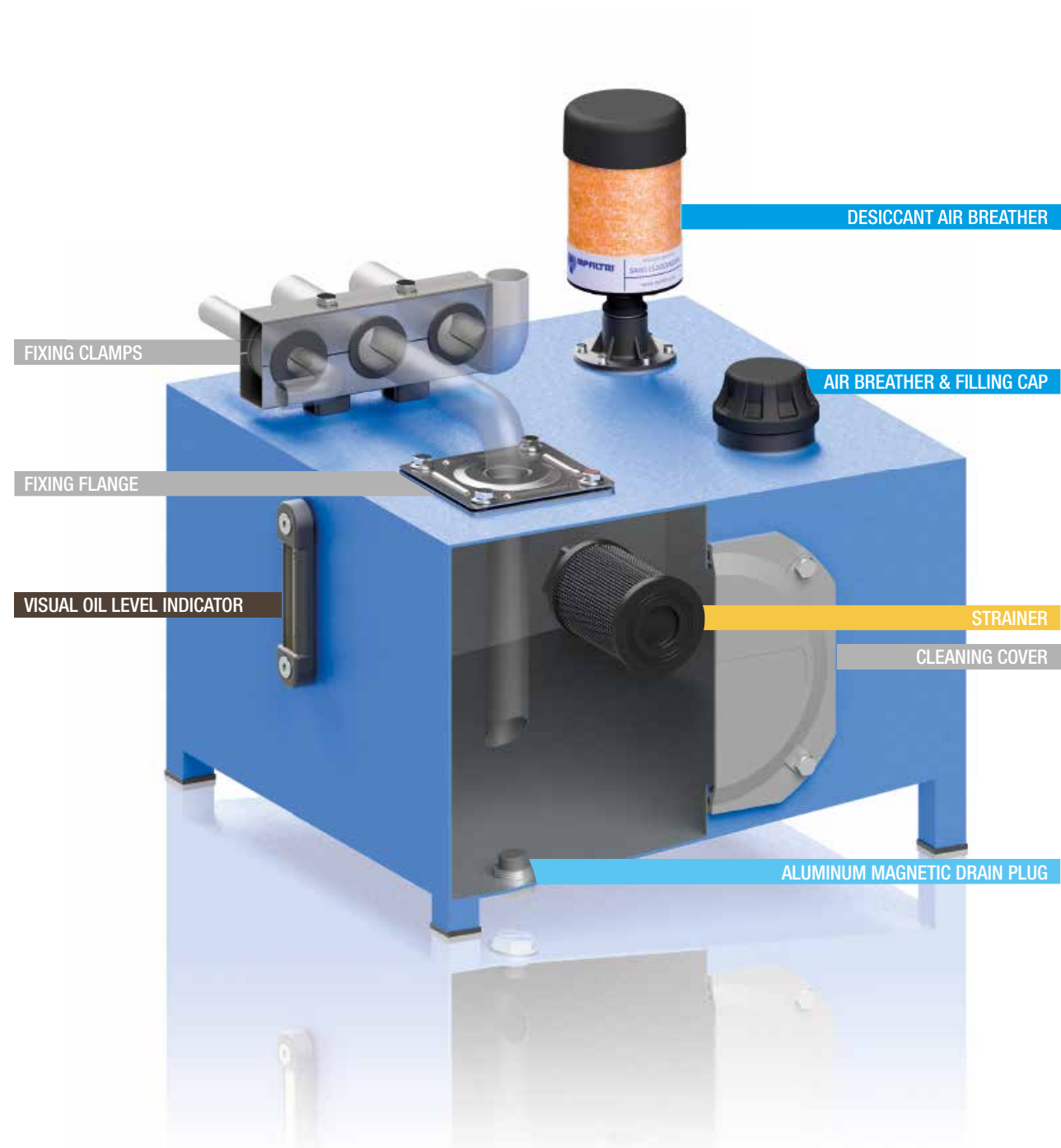
- Aluminium bell-housings for motors from 0.12 kW to 400 kW
- Couplings in Aluminium Cast Iron - Steel
- Damping rings
- Foot bracket
- Aluminium tanks
- Cleaning covers



TANK ACCESSORIES

- Oil filler and air breather plugs
- Optical and electrical level gauges
- Pressure gauge valve selectors
- Pipe fixing brackets
- Pressure gauges

TANK ACCESSORIES



1	page	INTRODUCTION
1		COMPANY
6		PRODUCT RANGE

10	page	STRAINERS
13		STR & MPA - MPM Submerged suction filter, with bypass or magnetic column

20	page	AIR BREATHERS AND FILLER PLUGS
23		SAP 054-075 - SA Air breathers
29		SAW 115 Moisture control desiccant air breathers
33		SCS Metal air breathers with interchangeable filter element
39		SME 1 - SMF 1 - SML 1 Risers for breathers and filler caps installation
45		TA 46 - TAP 50 - SAP 50 Filler plug and air filter up to 200 l/min
53		TA 80 Steel filler plug and air filter up to 500 l/min
57		TAP 90 Filler plug and polyamide air filter up to 550 l/min
63		TAP 114 Filler plug and polyamide air filter up to 1600 l/min
67		TAP 115 & SAP 115 Filler plug and polyamide air filter up to 3000 l/min

72	page	FILLER AND DRAIN PLUGS
75		TC 50 Polyamide filler plug
79		TKT - TSD - TKM Filler and draining plugs

86	page	VISUAL OIL LEVEL INDICATORS
89		LCP - LCC Visual oil level indicator - round shape
95		LVA - LVU Visual oil level indicator - vertical shape

100	page	ELECTRICAL OIL LEVEL INDICATORS
103		LEN - LEG - LET - LEM - LEU Electric oil level indicator
115		LVK Visual and Electric oil level indicator

120	page	ACCESSORIES
123		EM1 Pressure gauge isolator
129		SVM Gauge selector valve
133		FTA - FTR Oil tank fixing flange
137		MULTIFIT SFT Fixing clamps
143		OB Cleaning covers
149		SE10LT Aluminium tanks



Strainers are used as safety filters to protect pumps from gross contamination which can cause them to grip.

Strainers



STR & MPA - MPM series

Flow rate up to 875 l/min



STR & MPA-MPM GENERAL INFORMATION

Description

Technical data

Strainers

Flow rate up to 875 l/min

STR

STR is a range of suction strainers for protection of the downstream pump against the coarse contamination.

They are placed below the oil level directly connected to the suction line of the pump.

Available features:

- Female threaded connections up to 3", for a maximum flow rate of 875 l/min
- Bypass valve, to relieve excessive pressure drop across the filter media

Common application:

- Mobile machines (Construction and Agriculture machines)
- Industrial equipment

MPA - MPM

MPA and MPM are ranges of suction strainers for protection of the downstream pump against the coarse contamination.

They are placed below the minimum oil level, directly connected to the suction line of the pump.

The robust design allows the use of these filters in any heavy duty application.

Available features:

- Female threaded connections up to 3", for a maximum flow rate of 875 l/min
- Magnetic column (MPM), to hold the ferrous particles

Common application:

Industrial equipment

STR materials

- 1 - Connection: Polyamide, GF reinforced
- 2 - Core tube: Tinned steel
- 3 - Wire mesh
- 4 - End cap: Polyamide, GF reinforced
- 5 - Bypass valve: Polyamide, GF reinforced - Steel

MPA - MPM materials

- 1 - Connection: Aluminium
- 2 - Magnetic column
- 3 - Tie rod: Galvanized steel
- 4 - End cap: Galvanized steel
- 5 - Core tube: Galvanized steel
- 6 - Filter media: Wire mesh
- 7 - Bottom: Galvanized steel
- 8 - Washer: Galvanized steel
- 9 - Self-locking nut: Galvanized steel - Polyamide

Bypass valve

Opening pressure 30 kPa (0.3 bar)

Elements

Fluid flow through the filter element from OUT to IN.

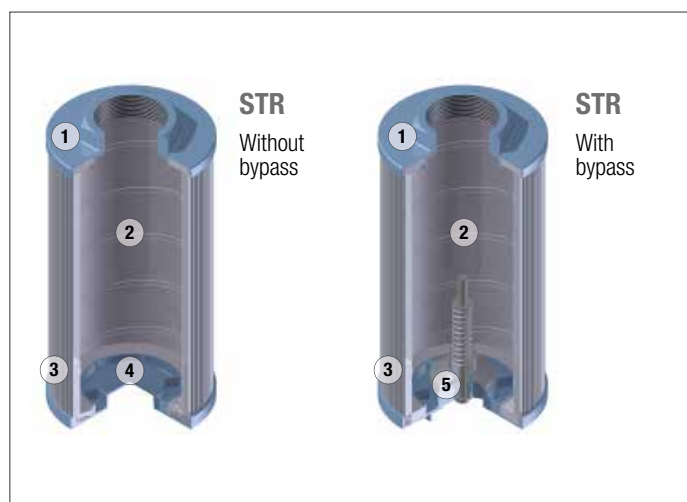
Temperature

From -25 °C to +110 °C



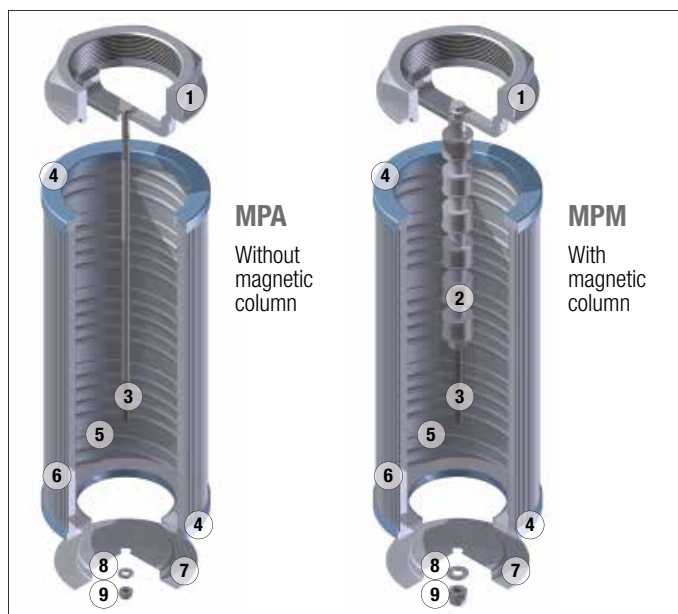
Quantity

Series and size		pcs/pack
STR	045 - 050	12
STR	065 - 070 - 086 - 100	6
STR	140 - 150	1
MPA - MPM	012	12
MPA - MPM	015 - 025 - 030 - 045 - 050 - 075 - 095 - 120 - 150	6
MPA - MPM	180 - 220 - 280 - 300 - 380 - 430	1

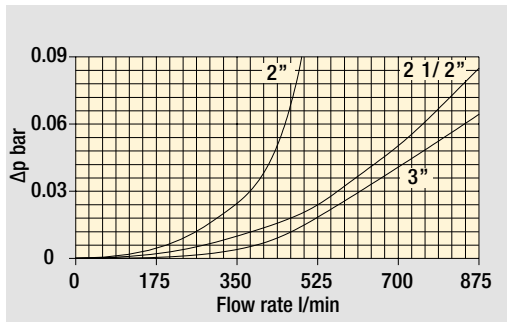
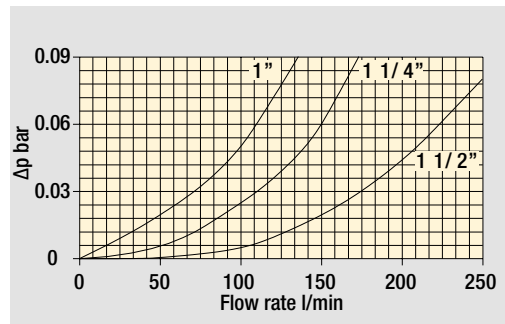
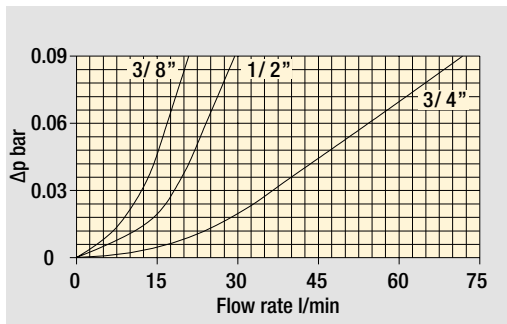


Weights [kg]

Filter series	
STR	see page 17
MPA - MPM	see page 19



Filters pressure drop Δp
in function of connection type



The curves are plotted using mineral oil with density of 0.86 kg/dm^3 in compliance with ISO 3968.
 Δp varies proportionally with density.

Flow rates [l/min]

Filter series	Thread	l/min
STR & MPA - MPM	3/8"	19
	1/2"	28
	3/4"	67
	1"	126
	1 1/4"	167
	1 1/2"	258
	2"	480
	2 1/2"	854
	3"	995

Hydraulic symbols

Filter series	Style S	Style B
STR	•	•
MPA - MPM	•	

Maximum flow rate for a complete suction filter with a pressure drop $\Delta p = 0.08 \text{ bar}$.

The reference fluid has a kinematic viscosity of $30 \text{ mm}^2/\text{s}$ (cSt)
and a density of 0.86 kg/dm^3 .

For different pressure drop or fluid viscosity we recommend to use
our selection software available on www.mpfiltri.com.

Please, contact our Sales Department for further additional information.

COMPLETE FILTER

Series and size

STR045

STR050

STR065

STR070

STR086

STR100

STR140

STR150

Configuration example 1: STR045 1 B G1 M60 P01

Configuration example 2: STR100 4 S G2 M250 P01

Length and connection

	STR045	STR050	STR065	STR070	STR086	STR100	STR140	STR150
1	3/8"	3/8"	1/2"	1/2"	1 1/2"	1 1/4"	1 1/2"	2"
2	1/2"	1/2"	3/4"	3/4"	2"	1 1/4"	2"	2 1/2"
3	-	-	3/4"	3/4"	1 1/2"	1 1/2"	2"	3"
4	-	-	1"	1"	2"	2"	2 1/2"	-
5	-	-	-	-	1 1/2"	1 1/2"	3"	-
6	-	-	-	1/2"	2"	-	3"	-

Valves

S Without bypass

B With bypass 0.3 bar

Thread

G1 BSP

G2 NPT

Filtration rating

M25 Wire mesh 25 µm

M60 Wire mesh 60 µm

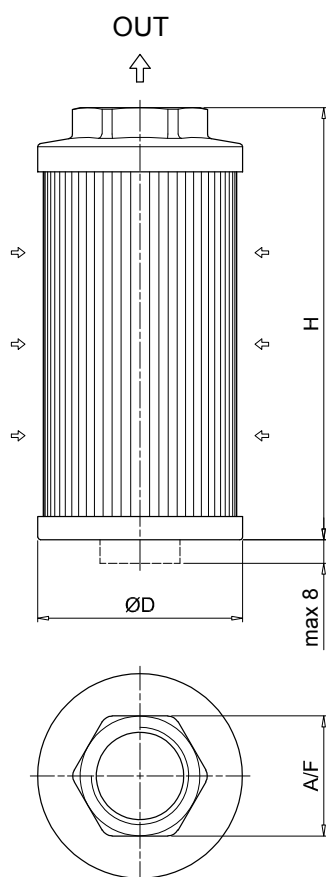
M90 Wire mesh 90 µm

M250 Wire mesh 250 µm

Execution

P01 MP Filtri standard

Pxx Customized



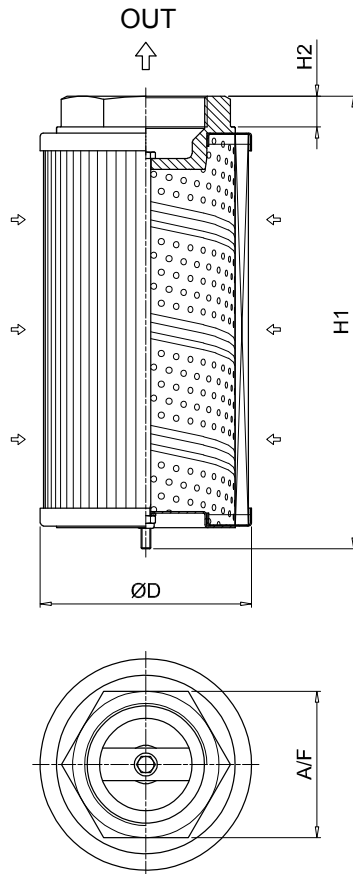
STR						
Size	Length	Thread	Ø D [mm]	H [mm]	A / F [mm]	Weight [kg]
045	1	3/8"	46	105	30	0.15
	2	1/2"	46	105	30	0.19
050	1	3/8"	52	79	30	0.11
	2	1/2"	52	79	30	0.11
065	1	1/2"	65	110	41	0.19
	2	3/4"	65	110	41	0.22
	3	3/4"	65	144	41	0.24
	4	1"	65	144	41	0.22
070	1	1/2"	70	95	41	0.18
	2	3/4"	70	95	41	0.17
	3	3/4"	70	141	41	0.23
	4	1"	70	141	41	0.22
	6	1/2"	70	141	41	0.24
086	1	1 1/2"	86	143	69	0.33
	2	2"	86	143	69	0.30
	3	1 1/2"	86	201	69	0.43
	4	2"	86	201	69	0.40
	5	1 1/2"	86	261	69	0.53
	6	2"	86	261	69	0.50
100	1	1 1/4"	99	137	69	0.47
	2	1 1/4"	99	227	69	0.58
	3	1 1/2"	99	227	69	0.55
	4	2"	99	227	69	0.51
	5	1 1/2"	99	137	69	0.43
140	1	1 1/2"	130	160	69	0.70
	2	2"	130	160	69	0.68
	3	2"	130	262	69	0.94
	4	2 1/2"	130	272	101	1.10
	5	3"	130	272	101	1.00
	6	3"	130	330	101	1.17
150	1	2"	150	150	70	0.34
	2	2 1/2"	150	212	90	0.37
	3	3"	150	272	100	0.40

MPA-MPM

Designation & Ordering code

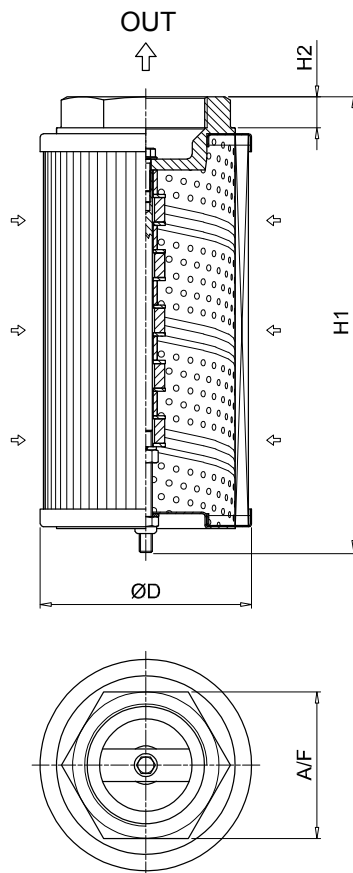
COMPLETE FILTER

Series		Configuration example 1:				
MPA	Without magnetic column	MPA	030	G1	M60	P01
MPM	With magnetic column	Configuration example 2:				
		MPM	430	G2	M250	P01
Length and connection						
012	3/8"					
015	1/2"					
025	1/2"					
030	3/4"					
045	3/4"					
050	1"					
075	1"					
095	1 1/4"					
120	1 1/4"					
150	1 1/2"					
180	1 1/2"					
220	2"					
280	2"					
300	2 1/2"					
380	2"					
430	3"					
Thread						
G1	BSP					
G2	NPT					
Filtration rating						
M25	Wire mesh 25 µm					
M60	Wire mesh 60 µm					
M90	Wire mesh 90 µm					
M250	Wire mesh 250 µm					
Execution						
P01	MP Filtri standard					
Pxx	Customized					



MPA

Size	Thread	ØD [mm]	H1 [mm]	H2 [mm]	A/F [mm]	Weight [kg]
012	3/8"	50	98	16	28	0.17
015	1/2"	50	98	16	28	0.17
025	1/2"	70	113	16	28	0.27
030	3/4"	70	115	18	42	0.36
045	3/4"	70	160	18	42	0.39
050	1"	70	160	18	42	0.35
075	1"	99	145	18	42	0.54
095	1 1/4"	99	148	20	60	0.63
120	1 1/4"	99	239	20	60	0.95
150	1 1/2"	99	239	20	60	0.91
180	1 1/2"	130	174	20	60	0.98
220	2"	130	162	13	80	1.00
280	2"	130	272	13	80	1.60
300	2 1/2"	130	281	20	90	1.67
380	2"	130	322	13	80	1.60
430	3"	130	335	22	106	1.93



MPM

Size	Thread	ØD [mm]	H1 [mm]	H2 [mm]	A/F [mm]	Weight [kg]
012	3/8"	50	98	16	28	0.17
015	1/2"	50	98	16	28	0.17
025	1/2"	70	113	16	28	0.27
030	3/4"	70	115	18	42	0.36
045	3/4"	70	160	18	42	0.39
050	1"	70	160	18	42	0.35
075	1"	99	148	18	42	0.54
095	1 1/4"	99	154	20	60	0.63
120	1 1/4"	99	244	20	60	0.95
150	1 1/2"	99	244	20	60	0.91
180	1 1/2"	130	174	20	60	0.98
220	2"	130	163	13	80	1.00
280	2"	130	273	13	80	1.60
300	2 1/2"	130	282	20	90	1.67
380	2"	130	323	13	80	1.60
430	3"	130	336	22	106	1.93



The complete series of air breathers and filler plugs makes it possible to meet all market demands.

Metal and plastic versions suitable for use on mobile and industrial equipment are available.

Filler plugs perform a dual function, air filtration at the tank inlet and prefiltration of the fluid by means of the basket, in order to prevent the ingress of foreign material into the tank during filling and top-up operations.

Correct operation of breather filters makes for longer life of the filter cartridges installed in the hydraulic circuit, and in applications where high level of contamination are present.

Desiccant breathers are also available to absorb free water and moisture contained in the air entering into the tank.

Air Breathers & Filler Plugs



SAP 054-075 - SA	page 23
SAW 115	29
SCS	33
SME 1 - SMF 1 - SML 1	39
TA 46 - TAP 50 - SAP 50	45
TA 80	53
TAP 90	57
TAP 114	63
TAP 115 - SAP 115	67

SAP 054-075 series

Polyamide air breather filter

SA series

Metal air breather filter



Technical data

Air breathers & Filler plugs

Polyamide air breather filter Flow rate up to 400 l/min

SAP is a range of plastic air breathers for protection of the tank against the solid contamination contained into the air. They are directly fitted on the tank.

Available features:

- Male threaded connections up to 3/4", for a maximum flow rate of 400 l/min
- Replaceable filter element
- Fine cellulose filtration, to get a good cleanliness level into the reservoir
- Polyester media is an option for heavy environmental conditions (high humidity, sand ...)

Common applications:

- Mobile machines (construction and agriculture machines)
- Industrial equipment

Flow rate Δp 0.02 bar

	Flow rate [l/min]	
	Filtration rating	
SAP054	L03	L10
SAP075	350	400

Materials

- Cover: Polyamide
- Connection: Polyamide
- Filter element: Resin impregnated paper

Temperature

From -25 °C to +100 °C

Weight

SAP 054 - 0.06 kg
SAP 075 - 0.15 kg



Designation & Ordering code

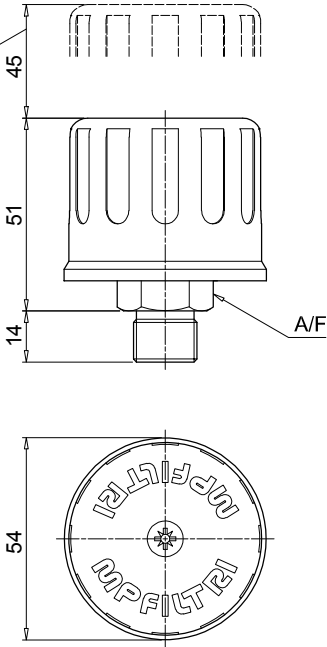
COMPLETE AIR FILTER

Series and size			Configuration example : SAP054					G2	L10	A	P01
SAP054											
SAP075											
Connections		SAP054	SAP075								
G1		G 3/8"	G 1/2"								
G2		G 1/2"	G 3/4"								
Filtration rating											
L03	Resin impregnated paper	3 µm									
L10	Resin impregnated paper	10 µm									
Seals											
A	NBR										
				Execution							
				P01 MP Filtri standard							
				Pxx Customized							

FILTER ELEMENT

Filter element series and size			Configuration example :		A4	L10	P01
A4	SAP054						
A7	SAP075						
Filtration rating							
L03	Resin impregnated paper	3 µm					
L10	Resin impregnated paper	10 µm					
			Execution				
			P01 MP Filtri standard				
			Pxx Customized				

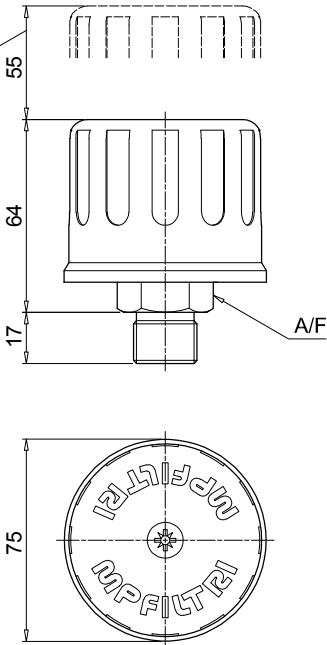
Recommended
clearance space
for maintenance



SAP054

Connections	A/F [mm]
G1	22
G2	27

Recommended
clearance space
for maintenance



SAP075

Connections	A/F [mm]
G1	27
G2	32

Air breathers & Filler plugs

Metal air breather filter Flow rate up to 2500 l/min

SA is a range of metal air breathers for protection of the tank against the solid contamination contained into the air.

They are directly fitted on the tank. The robust design allows the use of these filters in any heavy-duty application.

Available features:

- Male threaded connections up to 2 1/2", for a maximum flow rate of 2500 l/min
- Replaceable filter element
- Fine cellulose filtration, to get a good cleanliness level into the reservoir
- Polyester media is an option for heavy environmental conditions (high humidity, sand ...)

Common applications:

- Mobile machines (construction and agriculture machines)
- Industrial equipment

Flow rate Δp 0.02 bar

	Flow rate [l/min]	
	Filtration rating	
	L03	L10
SA036	140	140
SA053	250	250
SA075	350	400
SA115	800	850
SA145	1800	1850
SA185	2300	2500

Materials

- Cover: Steel
- Connection: Anodized steel, Galvanized steel
- Filter element: Resin impregnated paper
- Screws: Galvanized steel
- Washer: Teflon
- Ring: Galvanized steel
- Seals: NBR

Temperature

From -25 °C to +100 °C

Weight

SA 036	0.08 kg
SA 053	0.15 kg
SA 075	0.26 kg
SA 115	0.40 kg
SA 145	0.59 kg
SA 185	1.22 kg



Designation & Ordering code

COMPLETE AIR BREATHER

Series and size

SA036 | **SA053** | **SA075** | **SA115** | **SA145** | **SA185**

Connections

	SA036	SA053	SA075	SA115	SA145	SA185
G1	G 1/4"	G 1/4"	G 1/2"	G 1"	G 1 1/2"	G 2 1/2"
G2	G 3/8"	G 3/8"	G 3/4"	-	-	-
G3	G 1/2"	-	-	-	-	-
G4	1/4" NPT	1/4" NPT	1/2" NPT	1" NPT	1 1/2" NPT	2 1/2" NPT
G5	3/8" NPT	3/8" NPT	3/4" NPT	-	-	-
G6	1/2" NPT	-	-	-	-	-

Filtration rating

L03	Resin impregnated paper	3 µm
L10	Resin impregnated paper	10 µm
S	Without filter element	

Configuration example : **SA115** | **G1** | **L10** | **A** | **P01**

Seals

A NBR

Execution

P01 MP Filtri standard
Pxx Customized

FILTER ELEMENT

Filter element series and size

A05 | **A5** | **A7** | **A8** | **A10** | **A11**

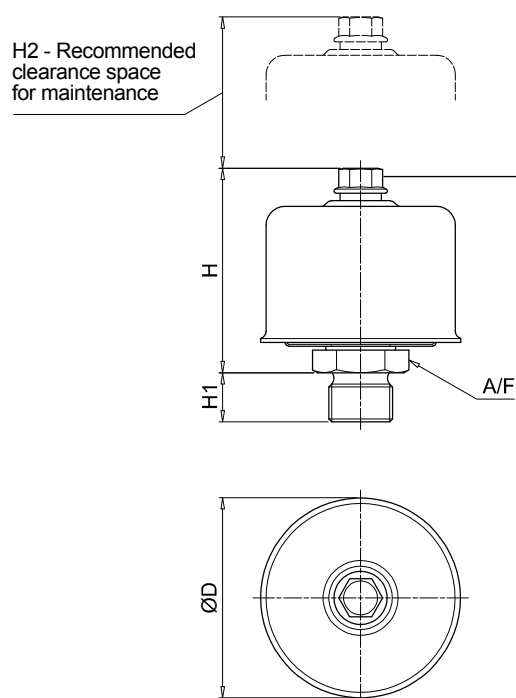
Filtration rating

L03	Resin impregnated paper	3 µm
L10	Resin impregnated paper	10 µm

Configuration example : **A8** | **L10** | **P01**

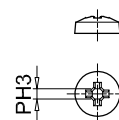
Execution

P01 MP Filtri standard
Pxx Customized

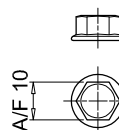


Type of bolt/nut

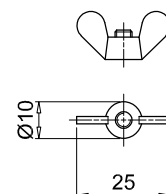
Phillips:
SA036



Hexagonal:
SA053
SA075
SA115
SA145



Wings:
SA185



Type	Connections	ØD [mm]	H [mm]	H1 [mm]	H2 [mm]	A/F [mm]
036	G1 ÷ G6	36	37	13	30	22
053	G1-G2-G4-G5	53	53	13	50	22
075	G1	75	69	13	60	27
	G2			17		32
	G4			15		27
	G5			20		32
115	G1 - G4	115	80	17	70	38
145	G1 - G4	145	115	25	100	55
185	G1 - G4	185	164	25	150	90

SAW 115 series

Moisture control desiccant air breathers



SAW 115 GENERAL INFORMATION

Technical data

Air breathers & Filler plugs

Moisture control desiccant air breathers

Max air flow up to 453 l/min

SAW is a range of desiccant breathers; they are products that combine the filtration of the solid contamination and the absorption of the free water contained into the air.

They are directly fitted on the tank; the filter layers remove the solid contamination while the desiccant agent holds the moisture contained in the air that enters into the tank as result of the tank breathing.

While in service or during shut-down, the desiccant agent dries the equipment, absorbing moisture from the reservoir.

Available features:

- Male threaded connections up to 1", for a maximum flow rate of 453 l/min
- Fine filtration rating, to get a good cleanliness level into the reservoir

Common applications:

Hydraulic systems, oil storage, tanks, transformers, renewable energy, Gearboxes.

Chemical Compatibility

Recommended:

- All Gear Oil
- Most Hydraulic Fluid
- Mineral and Synthetic Oil

Not Recommended:

- Phosphate Ester
- Hydrogen Sulphide
- Sulphuric Acid
- High Alkaline Cleaner

Flow rate Δp 0.02 bar

Flow rate [l/min]	
Filtration rating	03
SAW115	453

Materials

Connection: Polyamide
Internal Support Pipe: Polyamide
Screen: Polycarbonate
Cover: Polyamide
Dryer Agent: Silica Gel

Filter Efficiency 3 μ m absolute ($B_3 \geq 200$)

Seals NBR

Temperature From -25 °C to +90 °C

Humidity Level Below Ambient Conditions

SAW115G03A00P01: protects 30.000 + cycles

Deliquescent: Protects 5.000 cycles
(Testing parameters 23°C, 30 l/min)

Silica Gel Weight

Length 1 0.32 kg
Length 2 0.56 kg
Length 3 0.84 kg

Total Weight

Length 1 0.60 kg
Length 2 0.90 kg
Length 3 1.20 kg



Designation & Ordering code

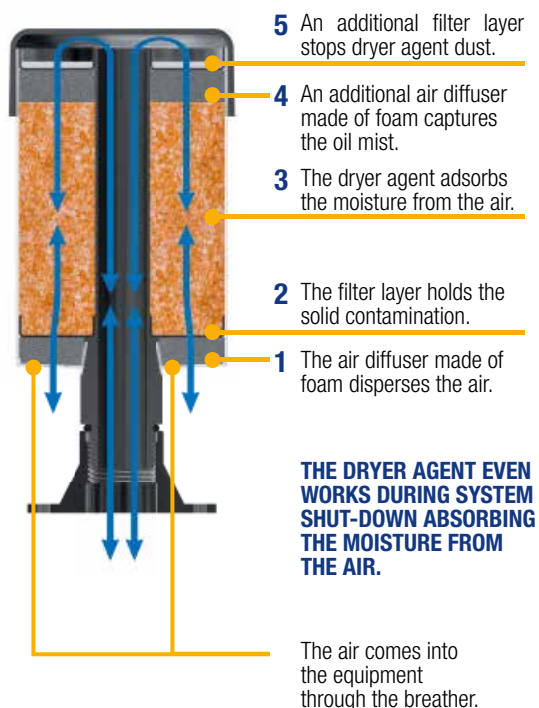
COMPLETE AIR FILTER

Serie	Configuration example : SAW115 1 G 03 A 0 0 P01							
SAW115								
Length								
1 2 3								
Connections								
G 1"								
Filtration rating								
03 Inorganic microfiber 3 μ m								
Seals								
A NBR								
Valve								
0 Without valve								
Option				Execution				
0 Standard				P01 MP Filtri standard				
				Pxx Customized				

ACCESSORIES

Serie	Configuration example : SMG1 S A P02			
SMG Adapter Flange				
Connections				
S Without screws				
Seals		Execution		
A NBR		P02 MP Filtri standard		

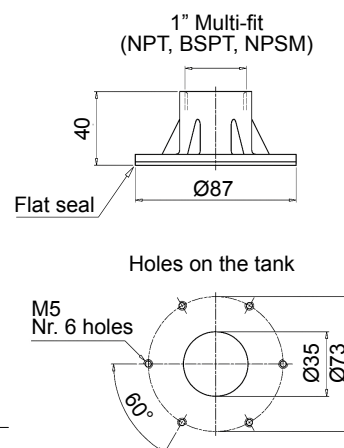
How does SAW Series works



SAW115

Length	H [mm]
1	154
2	205
3	256

Optional 6-hole tank flange
SMG1 type



(*) 1" Multi-fit (NPT, BSPT, NPSM)

Silica gel

Active breather



Depleted breather



Silica gel is the most efficient and economic moisture adsorbent for general applications.

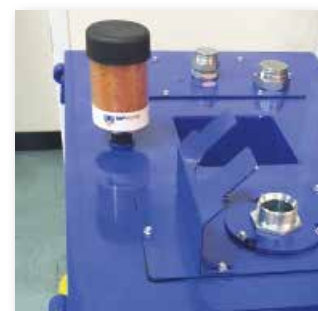
A white breather means the unit has done its job keeping moisture out of your lubricants.

Whenever the colour changes from orange to white it's time to replace the breather with a new one.

All breathers should be changed at least once a year.

IMPORTANT

Dispose of the exhausted silica gel according to the regulations in force in the country of use.



Air vent holes

Max hydraulic flow rate [l/min (cfm)]	Holes to open
up to 110 (4)	2
from 111 to 220 (4-8)	4
from 221 to 330 (8-12)	6
from 331 to 452 (12-16)	8

IMPORTANT INSTALLATION INFORMATION

- The air vent holes are plugged for any new breather
- The plugs protect the dryer agent during storage and shipment
- The plugs must be taken out during the installation, according to the max hydraulic flow rate



SCS series

Metal air breathers with interchangeable filter element



Technical data

Air breathers & Filler plugs

Metal air breathers with interchangeable filter element Flow rate up to 1330 l/min

SCS is a range of air breathers for protection of the tank against the solid contamination contained into the air.

They are composed of a spin-on filter can screwed on a connection tube, directly fitted on the tank. They are directly fitted on the tank.

Available features:

- Weld or flanged connection, for a maximum flow rate of 1415 l/min
- Fine cellulose and microfibre filtration, to get a good cleanliness level into the reservoir

Common applications:

- Mobile machines (construction and agriculture machines)
- Industrial equipment

Flow rate Δp 0.02 bar

Flow rate [l/min]				
	Filtration rating	P10	A03	A10
SCS050		550	515	530
SCS070		550	515	530
SCS100		1415	1300	1330
SCS150		1415	1300	1330

Materials

Riser: Galvanized steel

Temperature

From -25 °C to +100 °C

Weight

SCS050...G1	0.200 kg
SCS050...G2	0.265 kg
SCS100...G1	0.450 kg
SCS100...G2	0.645 kg

CS/CG050	0.73 kg
CS/CG070	0.95 kg
CS100	1.3 kg
CS150	1.6 kg
CG100	1.3 kg
CG150	1.6 kg



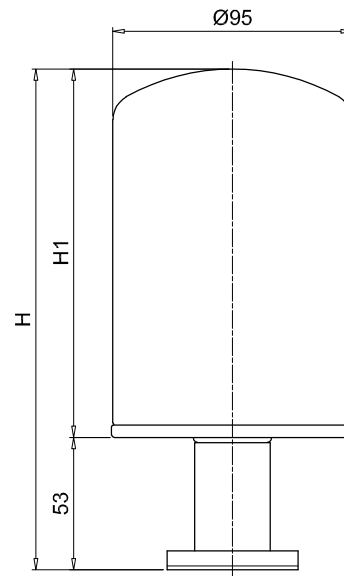
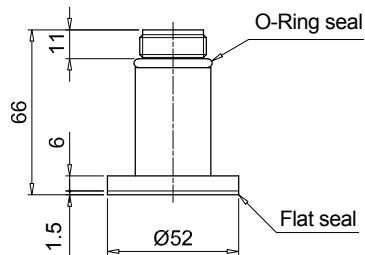
Designation & Ordering code

COMPLETE AIR FILTER

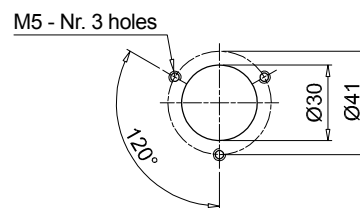
Series and size				Configuration example 1 : SCS050 C G2 V P01					
SCS050	SCS070	SCS100	SCS150	Configuration example 2 : SCS150 C G2 A10 V P01					
Connections									
C	Weld riser								
F	Screwed flange								
Threaded connection		SCS050 - 070		SCS100 - 150					
G1	ISO 228	G 3/4"		G 1 1/4"					
G2	U.S. standard	1" - 12 UNF		1 1/2" - 16 UN					
Filtration rating		Size:	050	070	100	150			
Without filter element			•		•				
A03	Inorganic microfiber	3 µm	•	•	•	•			
A10	Inorganic microfiber	10 µm	•	•	•	•			
P10	Resin impregnated paper	10 µm	•	•	•	•			
							Seals		
							A	NBR	Execution P01 MP Filtri standard Pxx Customized
							V	FPM	

FILTER ELEMENT

Filter element series			Threaded connection:		Configuration example :				
CS	Connection ISO 228		G1	G2	CG	150	A10	V	P01
CG	Connection U.S. standard								
Filter element size									
050	070	100	150						
Filtration rating									
A03	Inorganic microfiber	3 µm							
A10	Inorganic microfiber	10 µm							
P10	Resin impregnated paper	10 µm							
					Seals		Execution		
					A	NBR	P01	MP Filtri standard	
					V	FPM	Pxx	Customized	



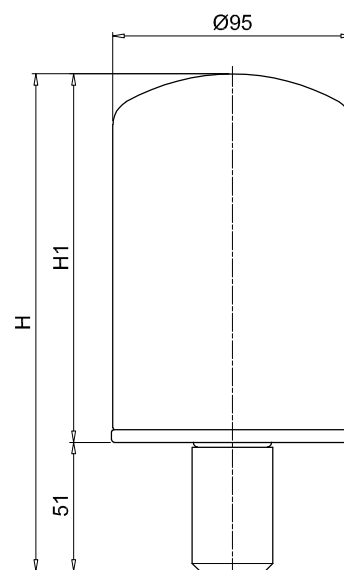
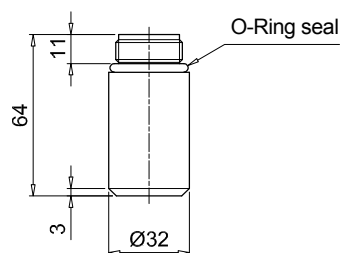
Holes on the tank



SCS050-070

Screwed flange

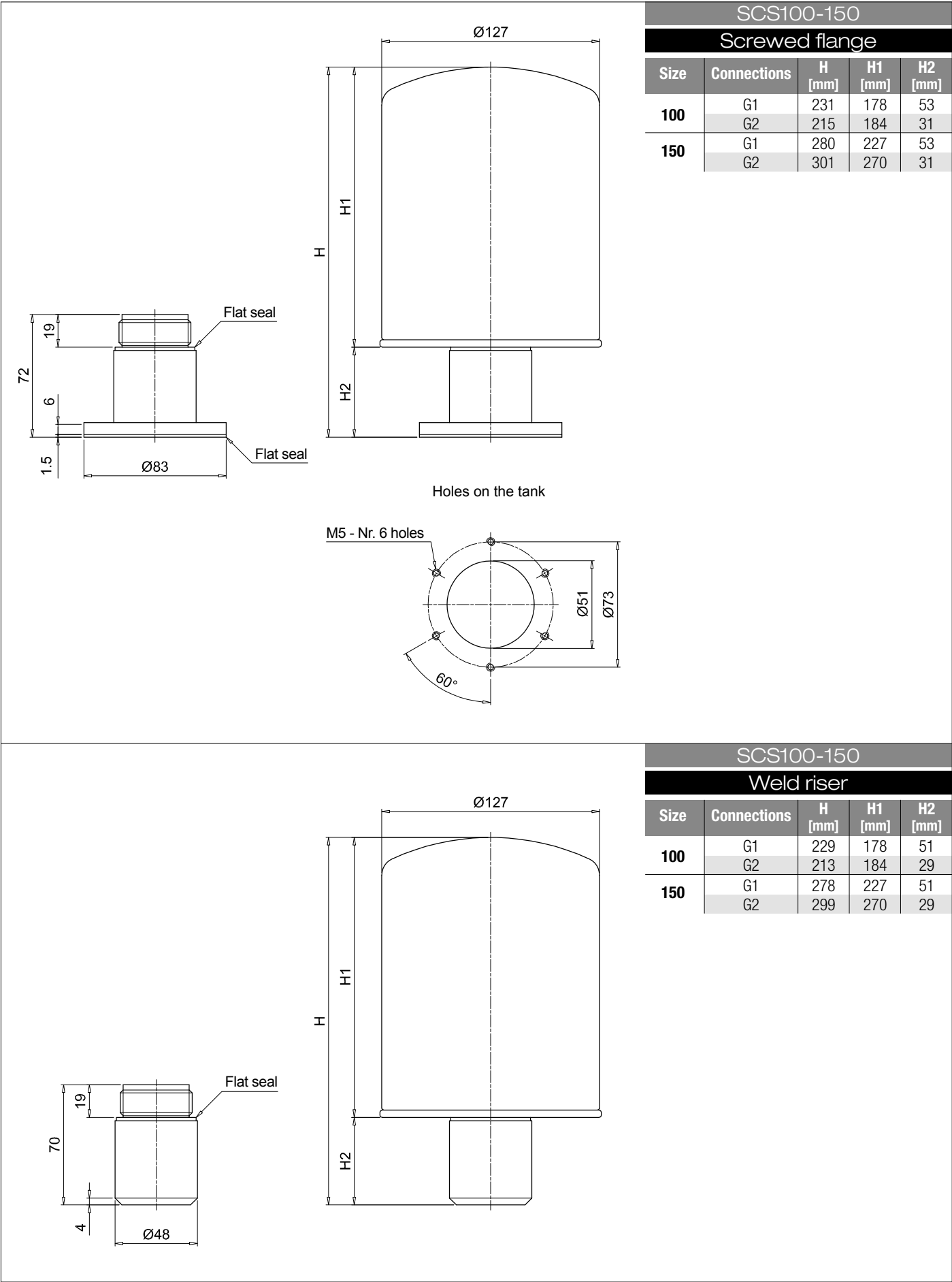
Size	H [mm]	H1 [mm]
050	199	146
070	263	210



SCS050-070

Weld riser

Size	H [mm]	H1 [mm]
050	197	146
070	261	210



SME 1 - SMF 1 - SML 1 series

Risers for breathers and filler caps installation



Technical data

Air breathers & Filler plugs

Risers for breathers and filler caps installation

SME/SMF/SML are ranges of risers for installation of the breathers and filler caps in any place on the tank.

They make the maintenance operation easy and fast.

Available features:

- SME: vertical riser made of polyamide for polyamide tanks, mainly used in the mobile machines
- SMF: sloping riser made of polyamide for polyamide tanks, mainly used in the mobile machines
- SML: sloping riser made of aluminum for metal tanks, mainly used in the industrial equipment and heavy-duty applications

Materials SME

- Body: Polyamide
- Seals: NBR
- Screws: Galvanized steel

Materials SMF

- Body: Polyamide
- Seals: NBR
- Screws: Galvanized steel

Materials SML

- Body: Aluminium
- Seals: NBR
- Screws: Galvanized steel

Temperature

From -25 °C to +100 °C

Weight

SME	0.250 kg
SMF	0.325 kg
SML	0.380 kg

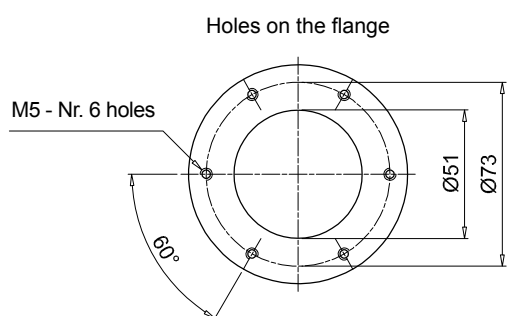
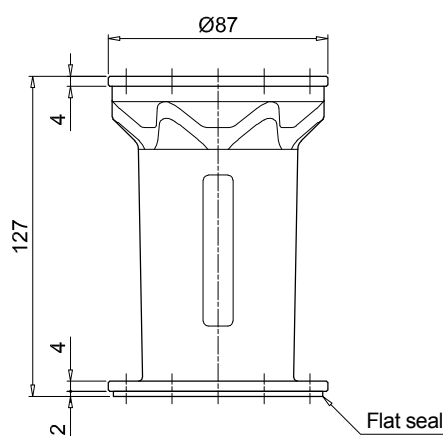
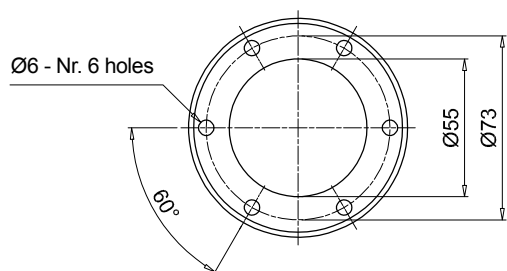


Designation & Ordering code

COMPLETE ADAPTER

Series		Configuration example :				SMF1	M	A	P01
SME1	Polyamide vertical riser								
SMF1	Polyamide sloping riser								
SML1	Aluminium sloping riser								
Connections									
M	Metric screws								
U	UNC screws								
Seals									
A	NBR								
Execution		Series							
		SME1	SMF1	SML1					
P01	MP Filtri standard		•	•					
P02	Standard without logo	•							

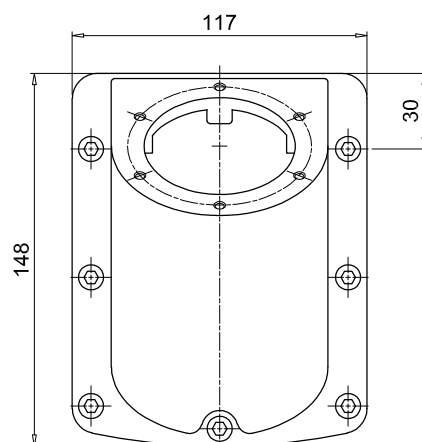
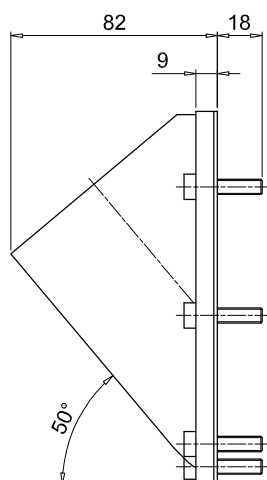
SME1



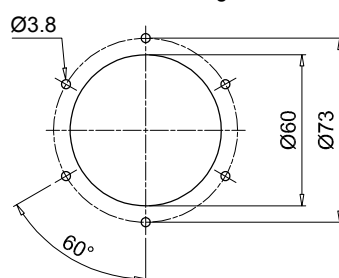
SME 1-SMF 1-SML 1

Dimensions

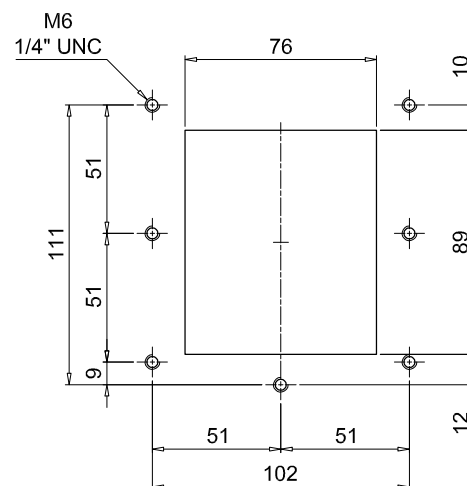
SMF1



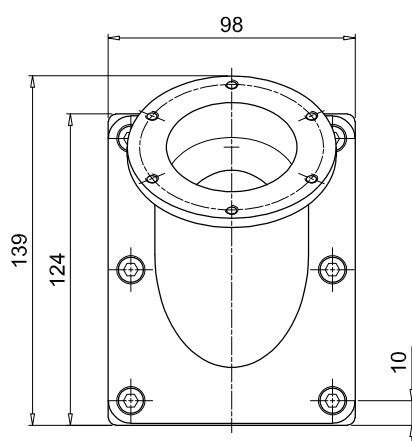
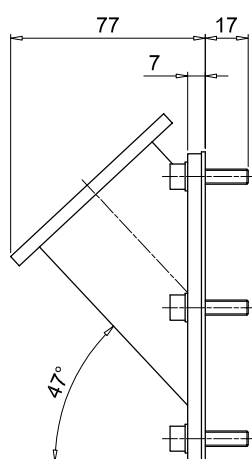
Holes on the flange



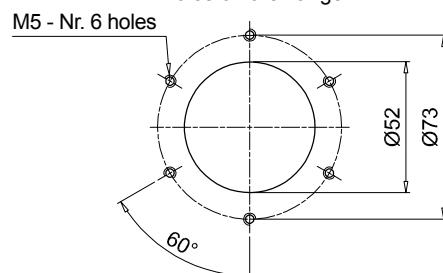
Holes on the tank



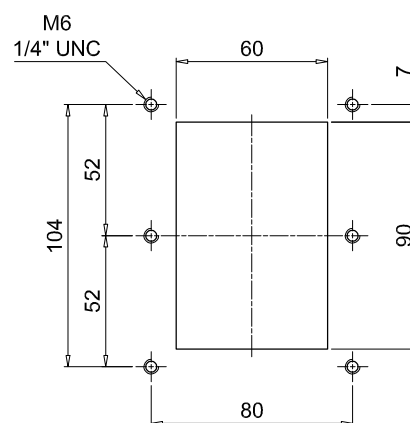
SML1



Holes on the flange



Holes on the tank



TA 46 TAP 50 SAP 50 series

**Steel filler plug
and air filter**

**Polyamide
filler plug**

**Polyamide
air filter**



Technical data

Air breathers & Filler plugs

Steel filler plug and air filter Flow rates up to 200 l/min

TA46 is a range of compact metal air breathers and filler caps for protection of the tank against the solid contamination contained into the air and filling of the fluid into the systems during the commissioning and maintenance procedures. They are directly fitted on the tank. The robust design allows the use of these filters in any heavy-duty application.

Available features:

- Male threaded connections up to 1/4" and flanged connection with bayonet, for a maximum flow rate of 200 l/min
- Fine cellulose filtration, to get a good cleanliness level into the reservoir
- Filling basket, to hold the coarse contamination contained into the fluid and to diffuse the fluid flow into the tank

Common applications:

- Compact hydraulic systems
- Compact mobile machines
- Industrial equipment

Flow rate Δp 0.02 bar

	Flow rate [l/min]	
	Filtration rating	
TA46	03	10
	150	200

Materials (version G/N)

- Cover: Chrome plated steel
- Filter element: Resin impregnated paper, Polyurethane
- Flange: Galvanized steel
- Connection: Phosphatized steel

Materials (version B)

- Cover: Chrome plated steel
- Filter element: Resin impregnated paper, Polyurethane
- Flange: Galvanized steel
- Connection: Galvanized steel
- Seals: NBR
- Chain: Brass
- Screws: Galvanized steel
- Basket: Galvanized steel

Temperature

From -25 °C to +100 °C

Weight

TA 46 B 0.10 kg
TA 46 G/N 0.11 kg



Designation & Ordering code

COMPLETE FILLER PLUG

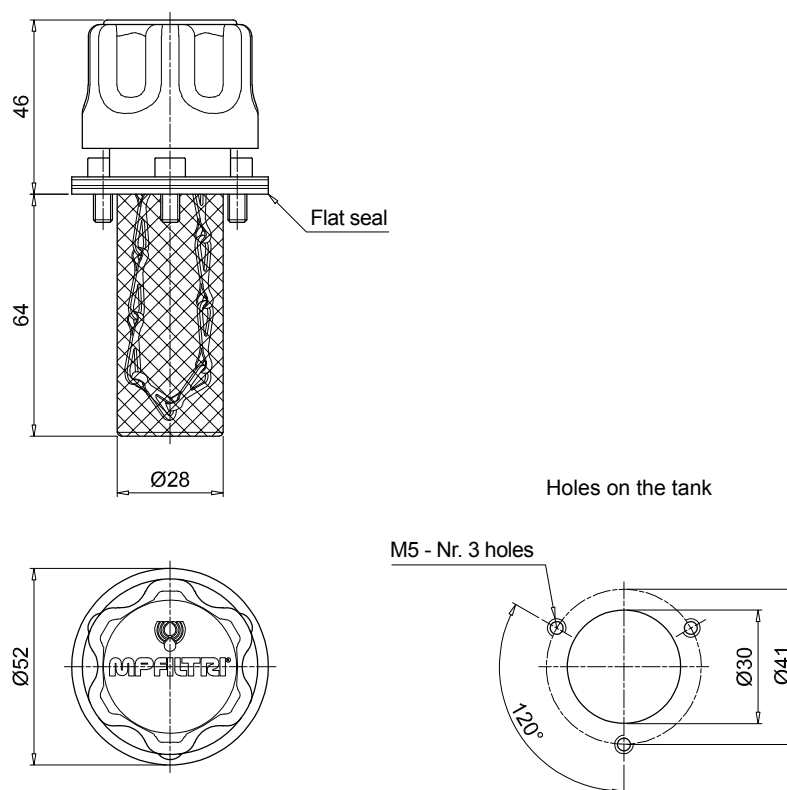
Serie	Configuration example 1 :	TA46	B	03	A	0	0	1	P01
TA46	Configuration example 2 :	TA46	G	10					P01
Connections									
B	Screwed flange with bayonet mount								
G	G 1/4"								
N	1/4" NPT								
Filtration rating									
03	Resin impregnated paper	3 µm							
10	Polyurethane	10 µm							
Seals		Connection:	B	G	N				
A	NBR		•						
Valve		Connection:	B	G	N				
0	Without valve		•						
Version		Connection:	B	G	N				
0	Standard		•						
Basket		Connection:	B	G	N				
1	With basket		•						

Execution

P01 MP Filtri standard
Pxx Customized

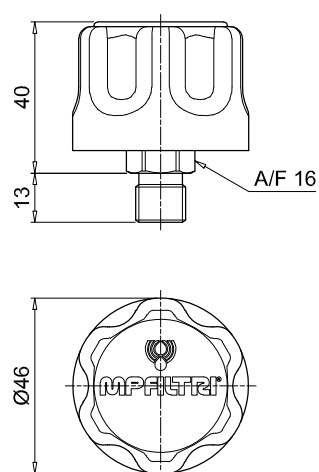
TA46

Screwed flange



TA46

Threaded connection



TAP 50 GENERAL INFORMATION

Technical data

Air breathers & Filler plugs

Filler plug and polyamide air filters

Flow rates up to 200 l/min

TAP50 is a range of compact plastic air breathers and filler caps for protection of the tank against the solid contamination contained into the air and filling of the fluid into the systems during the commissioning and maintenance procedures.

Available features:

- Flanged connection with bayonet, for a maximum flow rate of 200 l/min
- Fine cellulose filtration, to get a good cleanliness level into the reservoir
- Filling basket, to hold the coarse contamination contained into the fluid and to diffuse the fluid flow into the tank

Common applications:

- Compact hydraulic systems
- Compact mobile machines
- Industrial equipment

Flow rate Δp 0.02 bar

	Flow rate [l/min]	
	Filtration rating	
	03	10
TAP50	180	202

Materials

- Cover/ringnut: Polyamide
- Filter element: Resin impregnated paper, Polyurethane
- Pressurization valve: Polyamide, Galvanized steel, NBR
- Seals: NBR
- Flange: Polyamide
- Screws: Galvanized steel
- Basket: Polyamide

Temperature

From -25 °C to +100 °C

Weight

TAP 50 0.60 kg

Quantity

10 pcs/pack



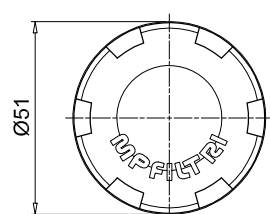
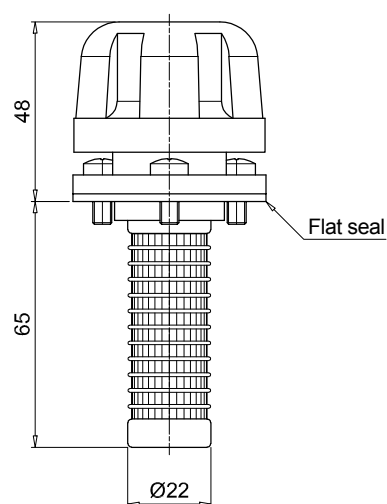
Designation & Ordering code

COMPLETE FILLER PLUG

Serie		Configuration example :		TAP50	C	03	A	1	1	P01
TAP50										
Connections										
C	Screwed flange with G 3/4" mount									
Filtration rating										
03	Resin impregnated paper 3 µm									
10	Polyurethane 10 µm									
Seals										
A	NBR									
Valve										
0	Without valve									
1	0.5 bar pressurization valve									
Basket										
1	With basket									
		Execution								
		P01	MP Filtri standard							
		Pxx	Customized							

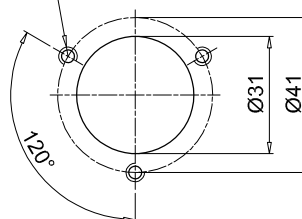
TAP50

Screwed flange



Holes on the tank

M5 - Nr. 3 holes



SAP 50 GENERAL INFORMATION

Technical data

Air breathers & Filler plugs

Air breathers

Flow rates up to 200 l/min

SAP50 is a range of compact plastic air breathers for protection of the tank against the solid contamination contained into the air.

They are directly fitted on the tank.

Available features:

- Male threaded connections up to 3/4", for a maximum flow rate of 200 l/min
- Fine cellulose filtration, to get a good cleanliness level into the reservoir

Common applications:

- Compact hydraulic systems
- Compact mobile machines
- Industrial equipment

Flow rate Δp 0.02 bar

	Flow rate [l/min]	
	Filtration rating	
	03	10
SAP50	180	204

Materials

- Cover/Connection: Polyamide
- Filter element: Resin impregnated paper, Polyurethane
- Pressurization valve: Polyamide, Galvanized steel, NBR
- Seals: NBR

Temperature

From -25 °C to +100 °C

Weight

SAP 50 0.40 kg

Quantity

10 pcs/pack



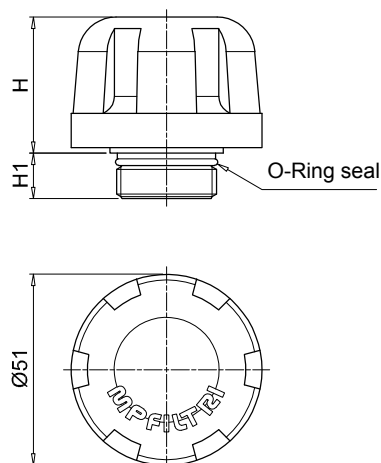
Designation & Ordering code

COMPLETE AIR FILTER

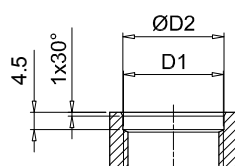
Serie		Configuration example :						
SAP50		SAP50	G3	L03	A	1	0	P01
Connections								
G1	G 1/4"							
G2	G 3/8"							
G3	G 1/2"							
G4	G 3/4"							
G9	SAE 6 - 9/16" - 18 UNF							
G10	SAE 12 - 1 1/16" - 12 UN							
Filtration rating								
L03	Resin impregnated paper 3 µm							
L10	Polyurethane 10 µm							
Seals								
A	NBR							
Valve		Connection						
		G1	G2	G3	G4	G9	G10	
0	Without valve	•	•	•	•	•	•	
1	0.5 bar pressurization valve		•	•	•		•	
Basket								
0	Without basket							
Execution								
P01	MP Filtri standard							
Pxx	Customized							

SAP50

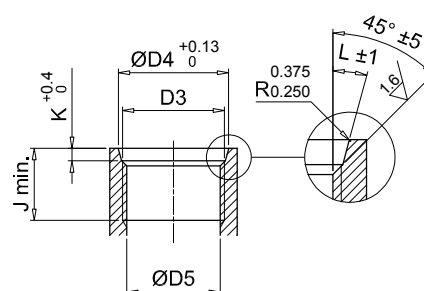
Threaded
connection



Housing on the tank
for connections BPS



Housing on the tank
for connections SAE



Connections	H [mm]	H1 [mm]	D1 [mm]	ØD2 [mm]	D3 [mm]	ØD4 [mm]	ØD5 [mm]	J min. [mm]	K [mm]	L
G1	36	12	G 1/4"	13.5	-	-	-	-	-	-
G2	36	12	G 3/8"	17	-	-	-	-	-	-
G3	36	12	G 1/2"	21.5	-	-	-	-	-	-
G4	36	12	G 3/4"	26.7	-	-	-	-	-	-
G9	36	12	-	-	SAE 6 - 9/16" - 18 UNF	15.6	13.081 12.751	12.7	2.5	12°
G10	35	14.5	-	-	SAE 12 - 1 1/16" - 12 UN	29.2	24.978 24.696	19	3.3	15°

TA 80 series

Steel filler plug and air filter up to 550 l/min



TA 80 GENERAL INFORMATION

Technical data

Air breathers & Filler plugs

Steel filler plug and air filter Flow rates up to 550 l/min

TA80 is a range of metal air breathers and filler caps for protection of the tank against the solid contamination contained into the air and filling of the fluid into the systems during the commissioning and maintenance procedures.

They are directly fitted on the tank. The robust design allows the use of these filters in any heavy-duty application.

Available features:

- Male threaded connections up to 3/4" and flanged connection with bayonet, for a maximum flow rate of 550 l/min
- Fine cellulose filtration, to get a good cleanliness level into the reservoir
- Pressurization valve with different setting, to guarantee a positive pressure into the tank in any application with metal or plastic tanks
- Padlock tab, to secure the air breather to the tank
- Filling basket, to hold the coarse contamination contained into the fluid and to diffuse the fluid flow into the tank

Common applications:

- Hydraulic systems
- Mobile machines
- Industrial equipment

Flow rate Δp 0.02 bar

	Flow rate [l/min]		
	Filtration rating	03	10
TA80		450	550

Materials

- Cover: Chrome Plated steel
- Filter element: Resin impregnated paper, Polyurethane
- Pressurization valve: Polyamide (bodies), Galvanized steel (end cap - disk), Steel (spring), NBR (seals)
- Flange and anti-splash feature: Galvanized steel
- Seals: NBR
- Screws, Flange: Galvanized steel
- Chain, Ring: Brass
- Basket (only TA80B): Galvanized steel

Temperature

From -25 °C to +100 °C

Weight

L 80 mm 0.33 kg
L 100 mm 0.35 kg



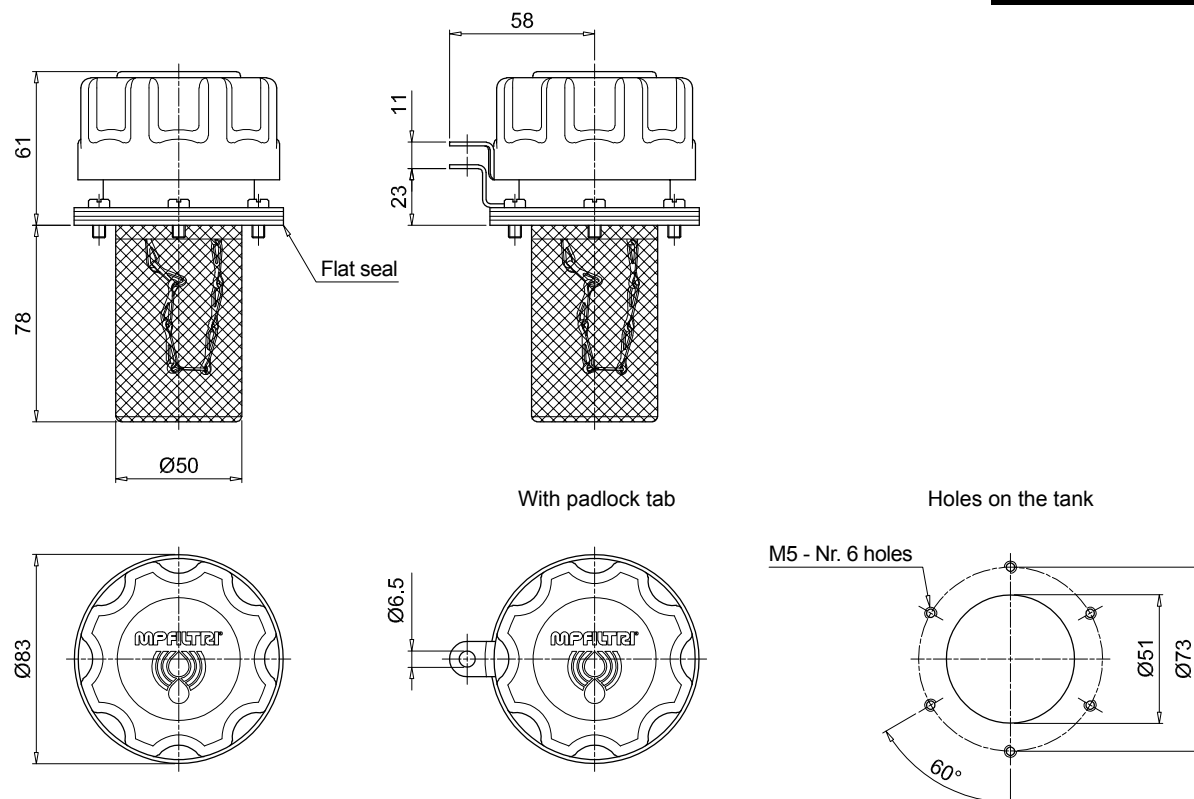
Designation & Ordering code

COMPLETE FILLER PLUG / COMPLETE AIR FILTER

Serie		Configuration example 1 : TA80 B 03 A 0 L 1 P01							
TA80		Configuration example 2 : TA80 G 10 A 2 P01							
Connections									
B	Screwed flange with bayonet mount	G	G 3/4"						
D	Weld flange with bayonet mount	N	3/4" NPT						
Filtration rating		Connection:	B	D	G	N			
00	Without filter (blind filler plug)		•	•					
03	Resin impregnated paper 3 µm		•	•	•	•			
10	Polyurethane 10 µm		•	•	•	•			
Seals									
A	NBR								
Valve		Filtration rating:	00	03	10				
0	Without valve		•	•	•				
1	0.3 bar pressurization valve			•	•				
2	0.7 bar pressurization valve			•	•				
9	With anti-splash feature			•	•				
Version		Connection:	B	D	G	N			
0	Standard		•	•					
L	With padlock tab		•						
Basket		Connection:	B	D	G	N			
0	Without basket		•	•					
1	With basket 80 mm		•						
3	With basket 100 mm			•					
Execution									
P01	MP Filtri standard								
Pxx	Customized								

TA80

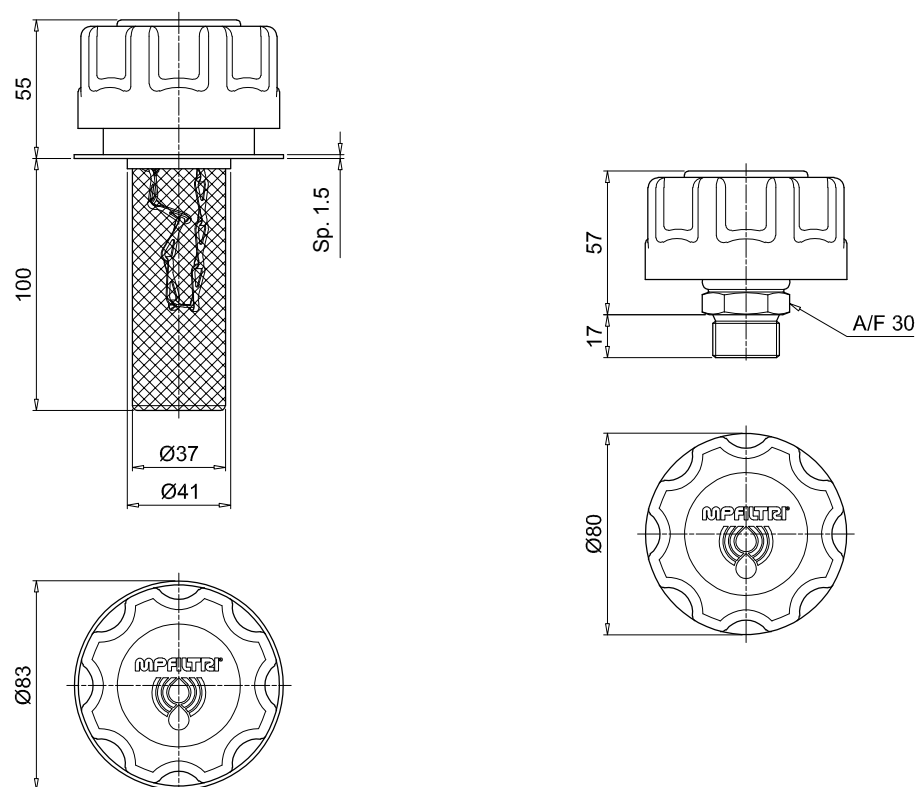
Screwed flange



TA80

Weld flange

Threaded connection



TAP 90 series

Filler plug and polyamide air filter up to 550 l/min



TAP 90 GENERAL INFORMATION

Technical data

Air breathers & Filler plugs

Filler plug and polyamide air filters

Flow rates up to 550 l/min

TAP90 is a range of plastic air breathers and filler caps for protection of the tank against the solid contamination contained into the air and filling of the fluid into the systems during the commissioning and maintenance procedures.

They are directly fitted on the tank.

Available features:

- Male threaded connections up to 1 1/2" and flanged connection with bayonet, for a maximum flow rate of 550 l/min
- Fine cellulose filtration, to get a good cleanliness level into the reservoir
- Pressurization valve with different setting, to guarantee a positive pressure into the tank in any application with metal or plastic tanks
- Padlock tab, to secure the air breather to the tank
- Filling basket, to hold the coarse contamination contained into the fluid and to diffuse the fluid flow into the tank
- Dipstick, to monitor the fluid level into the tank even in complicated positions

Common applications:

- Hydraulic systems
- Mobile machines
- Industrial equipment

Flow rate Δp 0.02 bar

	Flow rate [l/min]	
	Filtration rating	
	03	10
TAP90	450	550

Materials

- Cover/Ringnut: Polyamide
- Filter element: Resin impregnated paper, Polyurethane
- Pressurization valve: Polyamide (bodies), Galvanized steel (end cap - disk), NBR (seals)
- Flange B: Polyamide
- Seals: NBR
- Screws: Galvanized steel
- Padlock tab: Galvanized steel
- Chain, Ring: Brass
- Dipstick: Phosphatized steel
- Basket: Galvanized steel, Polyamide

Temperature

From -25 °C to +100 °C

Weight

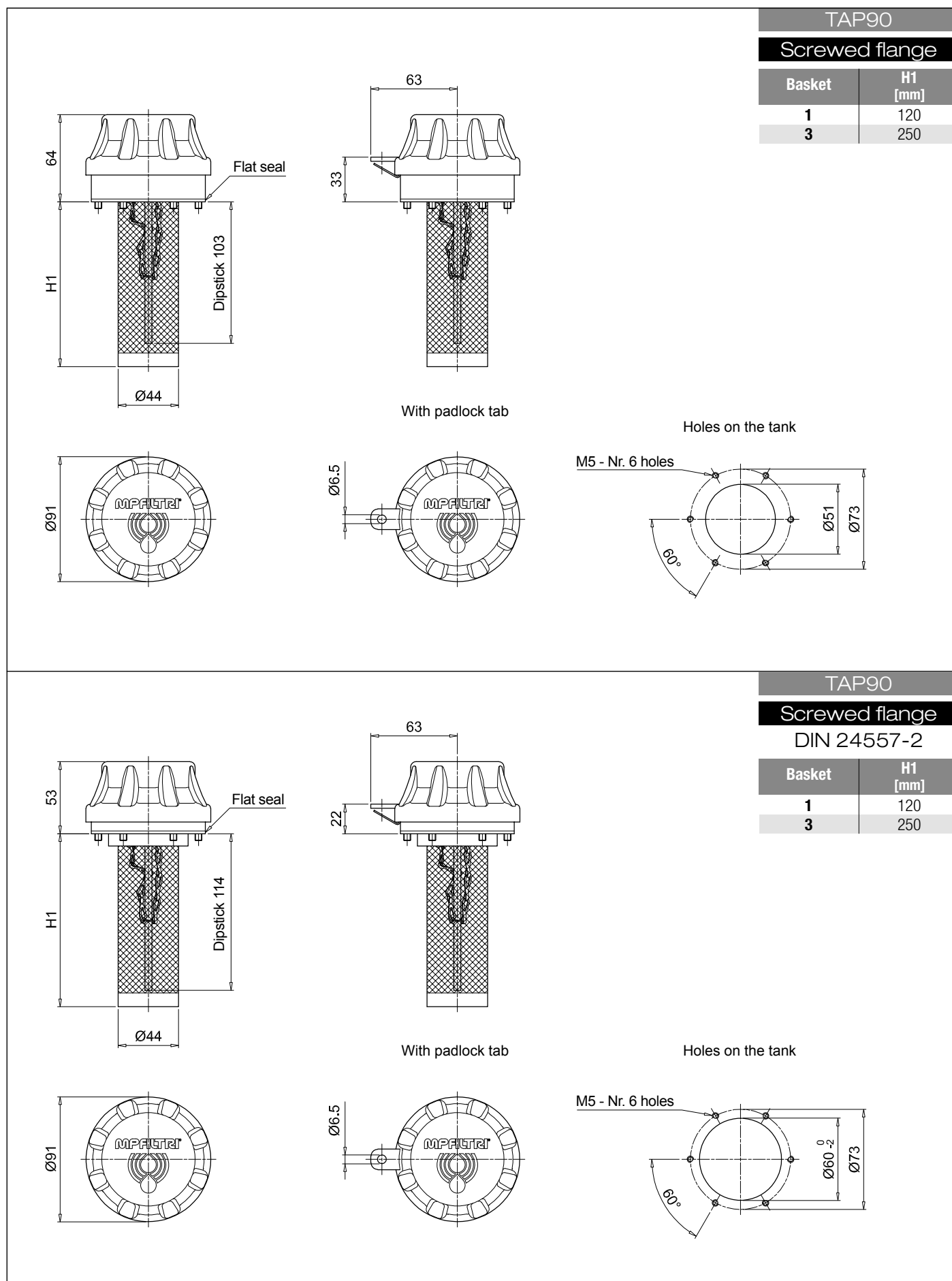
L 120 mm 0.25 kg
L 250 mm 0.31 kg



Designation & Ordering code

COMPLETE BREATHER PLUG

Serie		Configuration example 1 :		TAP90		R		03		A		1		A		1		P01	
TAP90		Configuration example 2 :		TAP90		G		10		A		2		L				P01	
Connections																			
R Screwed flange with M52x2 mount				H G 1 1/2"															
F Screwed flange DIN 24557-2				M 3/4" NPT															
C Weld riser				G M52x2															
				Q G 3/4"															
				Connection															
Filtration rating				R	F	C	Q	H	M	G									
00 Without filter (blind filler plug)				•	•	•													
03 Resin impregnated paper 3 µm				•	•	•	•	•	•	•									
10 Polyurethane 10 µm				•	•	•	•	•	•	•									
Valve				Filtration rating:			00	03	10										
0 Without valve							•	•	•										
1 0.3 bar pressurization valve								•	•										
2 0.7 bar pressurization valve								•	•										
Version																			
0 Standard				A With dipstick															
L With padlock tab				F With padlock tab and dipstick															
				Connection															
Basket				R	F	C	Q	H	M	G									
0 Without basket				•	•	•													
1 With basket 120 mm				•	•	•													
3 With basket 250 mm				•	•	•													
Execution																			
P01				MP Filtri standard															
Pxx				Customized															

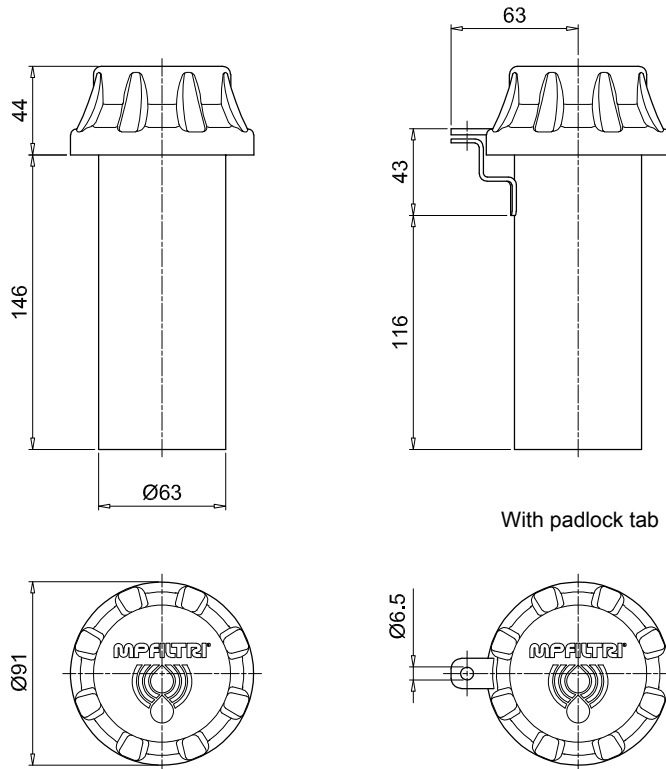


TAP 90

Dimensions

TAP90

Weld riser

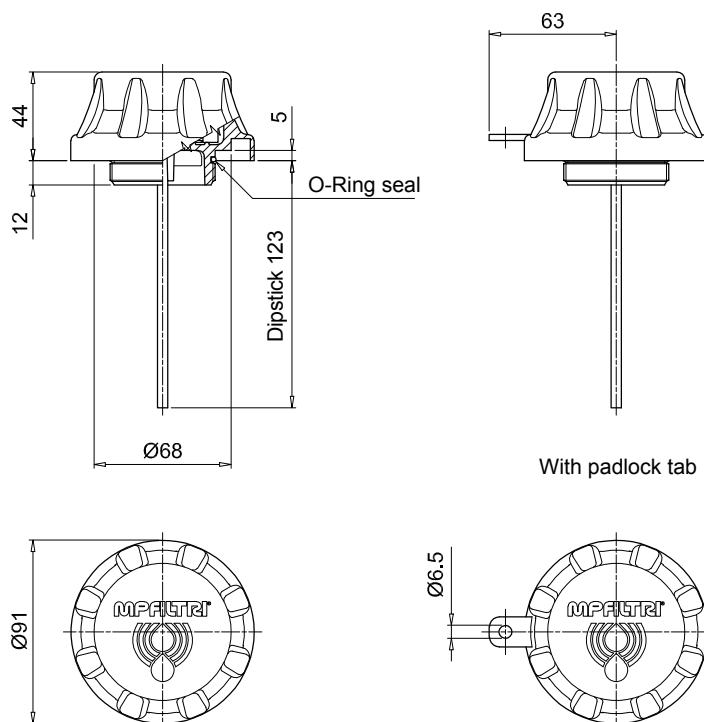


With padlock tab

TAP90

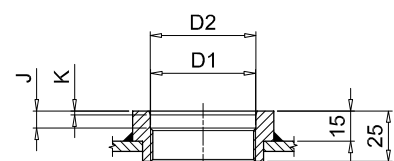
Threaded connection

Connections	D1 [mm]	D2 [mm]	J [mm]	K [mm]
Q	G 3/4"	-	-	-
H	G 1 1/2"	48.5	8.5	2x15°
M	3/4" NPT	-	-	-
G	M 52x2	52.5	8.5	2x15°



With padlock tab

Housing on the tank
for connections G - H - M - Q



TAP 114 series

Filler plug and polyamide air filter up to 1600 l/min



TAP 114 GENERAL INFORMATION

Technical data

Air breathers & Filler plugs

Filler plug and polyamide air filters

Flow rates up to 1600 l/min

TAP114 is a range of plastic large air breathers and filler caps for protection of the tank against the solid contamination contained into the air and filling of the fluid into the systems during the commissioning and maintenance procedures.

They are directly fitted on the tank.

Available features:

- Flanged connection, for a maximum flow rate of 1600 l/min
- Replaceable filter element
- Fine cellulose filtration, to get a good cleanliness level into the reservoir
- Polyester media is an option for heavy environmental conditions (high humidity, sand)
- Filling basket, to hold the coarse contamination contained into the fluid and to diffuse the fluid flow into the tank

Common applications:

- Hydraulic systems
- Mobile machines
- Industrial equipment

Flow rate Δp 0.02 bar

	Flow rate [l/min]
	Filtration rating L10
TAP114 length 1	1450
TAP114 length 3	1600

Materials

- Cover: Polyamide
- Filter element: Resin impregnated paper
- Flange: Polyamide
- Seals: NBR
- Screws: Galvanized steel
- Basket: Polyamide

Temperature

From -25 °C to +100 °C

Weight

TAP 114 length 1	0.185 kg
TAP 114 length 3	0.200 kg



Designation & Ordering code

COMPLETE FILLER PLUG / COMPLETE AIR FILTER

Series	Configuration example :					TAP114	1	L10	A	1	P01
TAP114											
Length											
1 3											
Filtration rating											
L10 Resin impregnated paper 10 µm											
Seals											
A NBR											
Version											
1 With basket											
						Execution					
						P01 MP Filtri standard					
						Pxx Customized					

FILTER ELEMENT

Configuration example : **A114** | **1** | **L10** | **P01**

Filter element series
A114

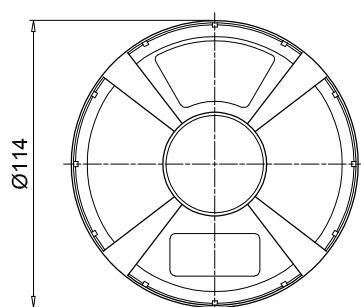
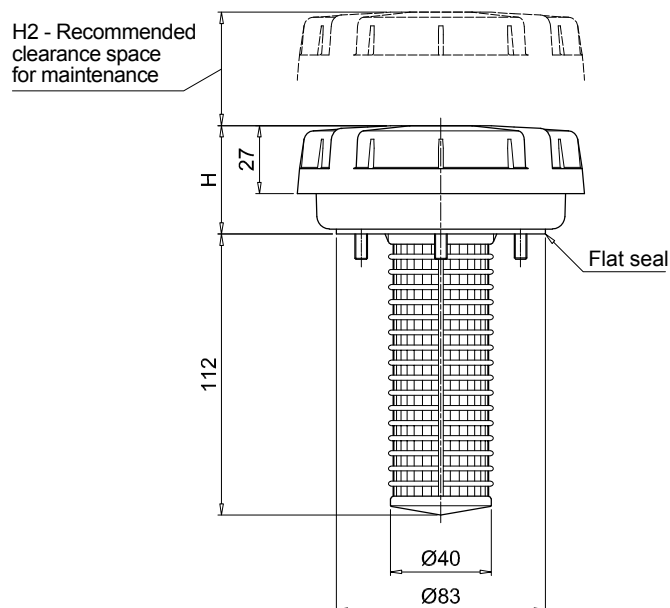
Length
1 | **3**

Filtration rating
L10 Resin impregnated paper 10 µm

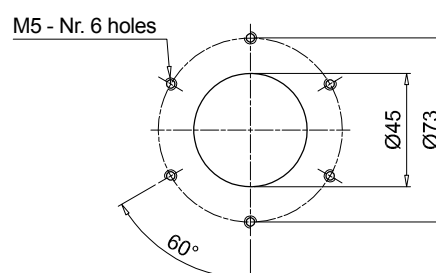
Execution
P01 MP Filtri standard
Pxx Customized

TAP114

Length	H [mm]	H2 [mm]
1	43	30
3	70	60



Holes on the tank



TAP 115 - SAP 115

Filler plug and polyamide air filter up to 3000 l/min



TAP 115 GENERAL INFORMATION

Technical data

Air breathers & Filler plugs

Filler plug and polyamide air filters
Flow rates up to 2150 l/min

TAP115 is a range of plastic large air breathers and filler caps for protection of the tank against the solid contamination contained into the air and filling of the fluid into the systems during the commissioning and maintenance procedures.
They are directly fitted on the tank.

Available features:

- Flanged connection, for a maximum flow rate of 2150 l/min
- Replaceable filter element.
- Fine cellulose and microfibre filtration, to get a good cleanliness level into the reservoir. Polyester media is an option for heavy environmental conditions (High humidity, sand)
- Visual clogging indicator
- Filling basket, to hold the coarse contamination contained into the fluid and to diffuse the fluid flow into the tank

Common applications:

- Hydraulic systems
- Mobile machines
- Industrial equipment

Flow rate Δp 0.02 bar

	Flow rate [l/min]	
	Filtration rating	A03 L10
TAP115 length 1	1600	2000
TAP115 length 2	2150	2150

Materials

- Cover/flange: Polyamide
- Filter element: Microfibre, Resin impregnated paper
- Seals: NBR, FPM
- Basket/screws: Galvanized steel

Clogging indicators

- Manual reset
- Set pressure 0.062 bar $\pm 10\%$

Temperature

From -25 °C to +100 °C

Weight

TAP 115	length 1	0.460 kg
TAP 115	length 2	0.585 kg



Designation & Ordering code

COMPLETE FILLER PLUG / COMPLETE AIR FILTER

Series	Configuration example : TAP115		2	F	A03	A	1	A	P01
TAP115									
Length									
1 2									
Connections									
F Flange									
Filtration rating									
A03 Inorganic microfiber 3 µm									
L10 Resin impregnated paper 10 µm									
Seals									
A NBR V FPM									
Version									
1 With basket									
Clogging indicator									
A Without indicator									
B With visual clogging indicator									
Execution									
P01 MP Filtri standard									
Pxx Customized									

FILTER ELEMENT

Filter element series
A115

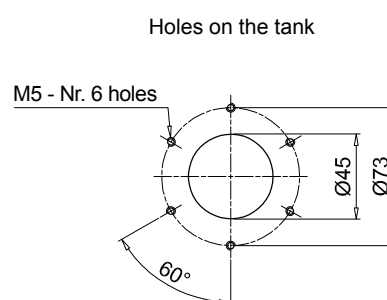
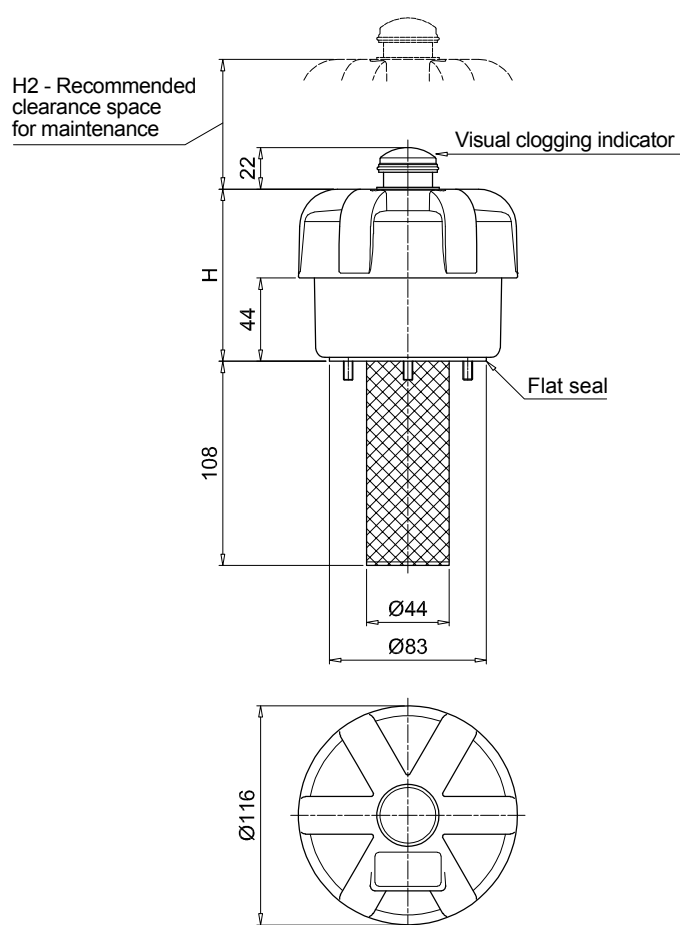
Length
1 | **2**

Filtration rating
A03 Inorganic microfiber 3 µm
L10 Resin impregnated paper 10 µm

Configuration example : **A115** **2** **A03** **P01**

Execution	
P01	MP Filtri standard
Pxx	Customized

TAP115		
Length	H [mm]	H2 [mm]
1	91	55
2	155	80



Technical data

Air breathers & Filler plugs

Filler plug and polyamide air filters

Flow rates up to 3000 l/min

SAP115 is a range of plastic large air breathers for protection of the tank against the solid contamination contained into the air.

They are directly fitted on the tank.

Available features:

- Male threaded connections up to 1 1/2", for a maximum flow rate of 3000 l/min.
- Replaceable filter element.
- Fine cellulose and microfibre filtration, to get a good cleanliness level into the reservoir. Polyester media is an option for heavy environmental conditions (High humidity, sand)
- Visual clogging indicator
- Antisplash, to avoid fluid coming out through the air breather due to sloshing
- Filling basket, to hold the coarse contamination contained into the fluid and to diffuse the fluid flow into the tank

Common applications:

- Hydraulic systems
- Mobile machines
- Industrial equipment

Flow rate Δp 0.02 bar

	Flow rate [l/min]	
	Filtration rating	
	A03	L10
SAP115 length 1 - G1"	1830	2170
SAP115 length 2 - G1"	2800	2800
SAP115 length 1 - G1 1/2"	1995	2330
SAP115 length 2 - G1 1/2"	3000	3000

Materials

- Cover/flange: Polyamide
- Filter element: Microfibre, Resin impregnated paper
- Connection: Polyamide
- Seals: NBR, FPM

Clogging indicators

- Manual reset
- Set pressure 0.062 bar $\pm 10\%$

Temperature

From -25 °C to +100 °C

Weight

SAP 115 length 1	0.410 kg
SAP 115 length 2	0.525 kg



Designation & Ordering code

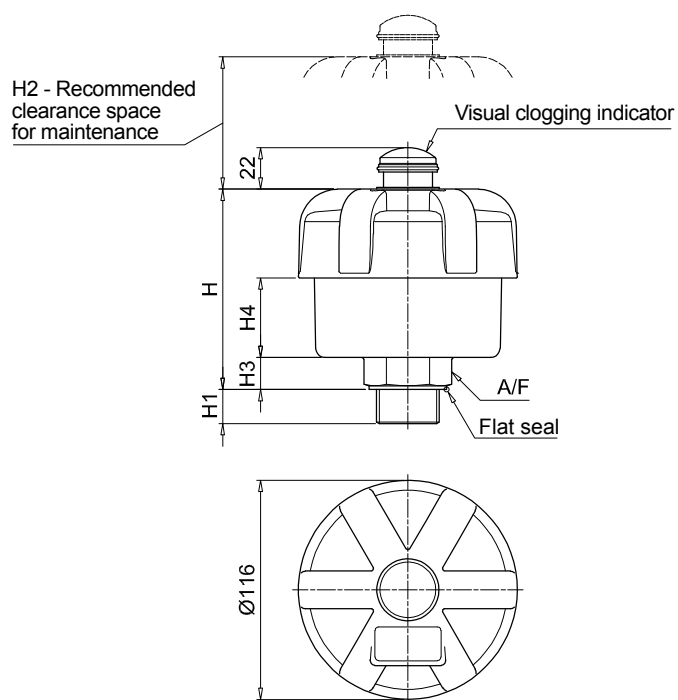
COMPLETE FILLER PLUG / COMPLETE AIR FILTER


Series	Configuration example : SAP115 2 A A03 A 1 A P01							
SAP115								
Length								
1 2 								
Connections								
A G 1" C G 1 1/2"								
Filtration rating								
A03 Inorganic microfiber 3 µm								
L10 Resin impregnated paper 10 µm								
Seals								
A NBR								
Version								
0 Standard 1 With anti-splash feature								
Clogging indicator								
A Without indicator								
B With visual clogging indicator								
								Execution
								P01 MP Filtri standard
								Pxx Customized

FILTER ELEMENT

Filter element series	Configuration example : A115 2 A03 P01			
A115				
Length				
1 2 				
Filtration rating				
A03 Inorganic microfiber 3 µm				
L10 Resin impregnated paper 10 µm				
				Execution
				P01 MP Filtri standard
				Pxx Customized

SAP115							
Length	Connections	H [mm]	H1 [mm]	H2 [mm]	H3 [mm]	H4 [mm]	A/F [mm]
1	A	106	18	55	17	42	41
	C	111	23	55	22	42	55
2	A	170	18	80	17	106	41
	C	175	23	80	22	106	55





The filler plugs series is composed by different versions: with breather filter, with dipstick for measuring the reservoir fluid level or with anti-splash fins to prevent spillage of oil from the reservoir to be specifically used on mobile equipments.

Filler and Drain Plugs



TC 50	page 75
TKT - TSD - TKM	79

TC 50 series

Polyamide filler plug



TC 50 GENERAL INFORMATION

Technical data

Filler and Drain Plugs

Polyamide filler plug

TC50 is a range of plastic compact air breathers and filler plugs for protection of the tank against the solid contamination contained into the air and filling of the fluid into the systems during the commissioning and maintenance procedures.

They are directly fitted on the tank.

Available features:

- G 1" male threaded connection, with or without nut
- Metal filtration, to hold the coarse contamination contained into the air
- Filling basket, to hold the coarse contamination contained into the fluid and to diffuse the fluid flow into the tank
- Caps with different graphics and colours, for the use in several applications

Common applications:

- Hydraulic systems
- Mobile machines
- Industrial equipment

Materials

- Cover: Polyamide
- Filter element: Galvanized steel
- Filler cap: Polyamide
- Strainer: Galvanized steel / Polyamide
AISI 304 / Polyamide
- Collar: Polyamide
- Seals: Inorganic fibre
- Ringnut: Phosphatized steel

Temperature

From -25 °C to +100 °C

Weight

TC 50 G1" conn. 0.70 kg

TC 50 with ringnut 0.10 kg

Quantity

25 pcs/pack



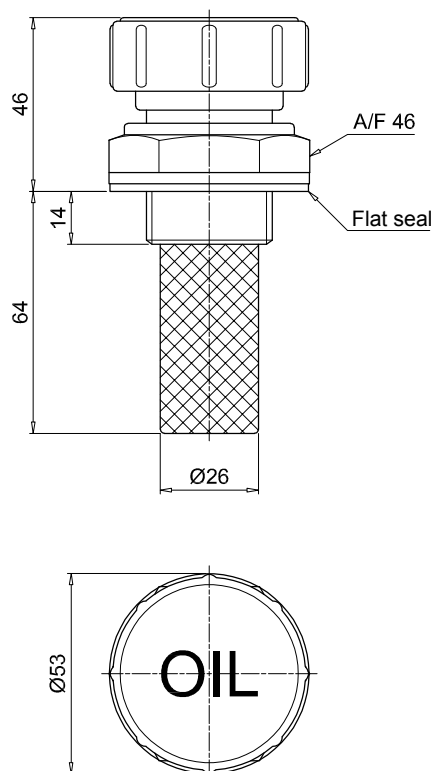
Designation & Ordering code

COMPLETE FILLER PLUG

Series		Configuration example :							
TC50		TC50	G1	L90	P	R	O	C70	P01
Connections									
G1	G 1"								
GA	With ringnut								
Filtration rating									
L90	Galvanized steel								
Seals									
P	Inorganic fiber								
Cover colour									
R	Red								
Y	Yellow								
Cover wording									
O	Oil								
N	Neutral								
Basket									
S	Without basket								
C70	With basket 70 mm - galvanized steel								
I70	With basket 70 mm - AISI 304								
		Execution							
		P01 MP Filtri standard							
		Pxx Customized							

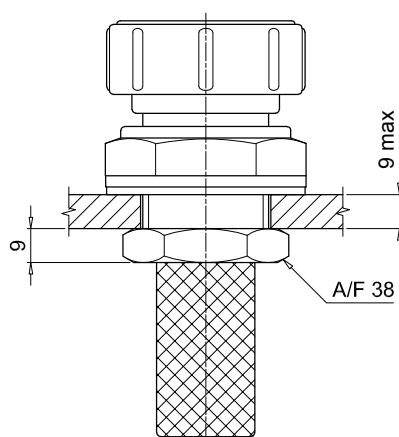
TC50

Threaded connection

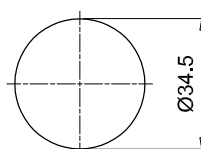


TC50

With ringnut



Through hole on the tank



TKT - TSD - TKM series

Filler and draining plugs



Technical data

Filler and draining plugs

Polyamide filler plug

TKT is a range of polyamide compact filler plugs for filling of the fluid into the systems during the commissioning and maintenance procedures. They are directly fitted on the tank.

Available features:

- Male threaded connections up to G 2"
- Breathing hole, to reduce the pressure inside the filter during the maintenance operations
- Caps with different graphics and colours, for the use in several applications
- Dipstick, to monitor the fluid level into the tank even in complicated positions
- Antisplash, to avoid fluid coming out through the air breather due to sloshing
- Labyrinth filter, to avoid fluid coming out through the air breather due to sloshing

Common applications:

- Hydraulic systems
- Mobile machines
- Industrial equipment

Materials

- Body: Polyamide
- Seals: NBR, Inorganic fibre
- Labyrinth: Polyamide
- Anti-splash feature: Resin impregnated paper
- Dipstick: Phosphatized steel

Temperature

From -25 °C to +100 °C

Weight

TKTG 13	5 g
TKTG 16	8 g
TKTG 20	10 g
TKTG 26	15 g
TKTG 33	30 g
TKTG 42	32 g
TKTG 60	35 g

Quantity

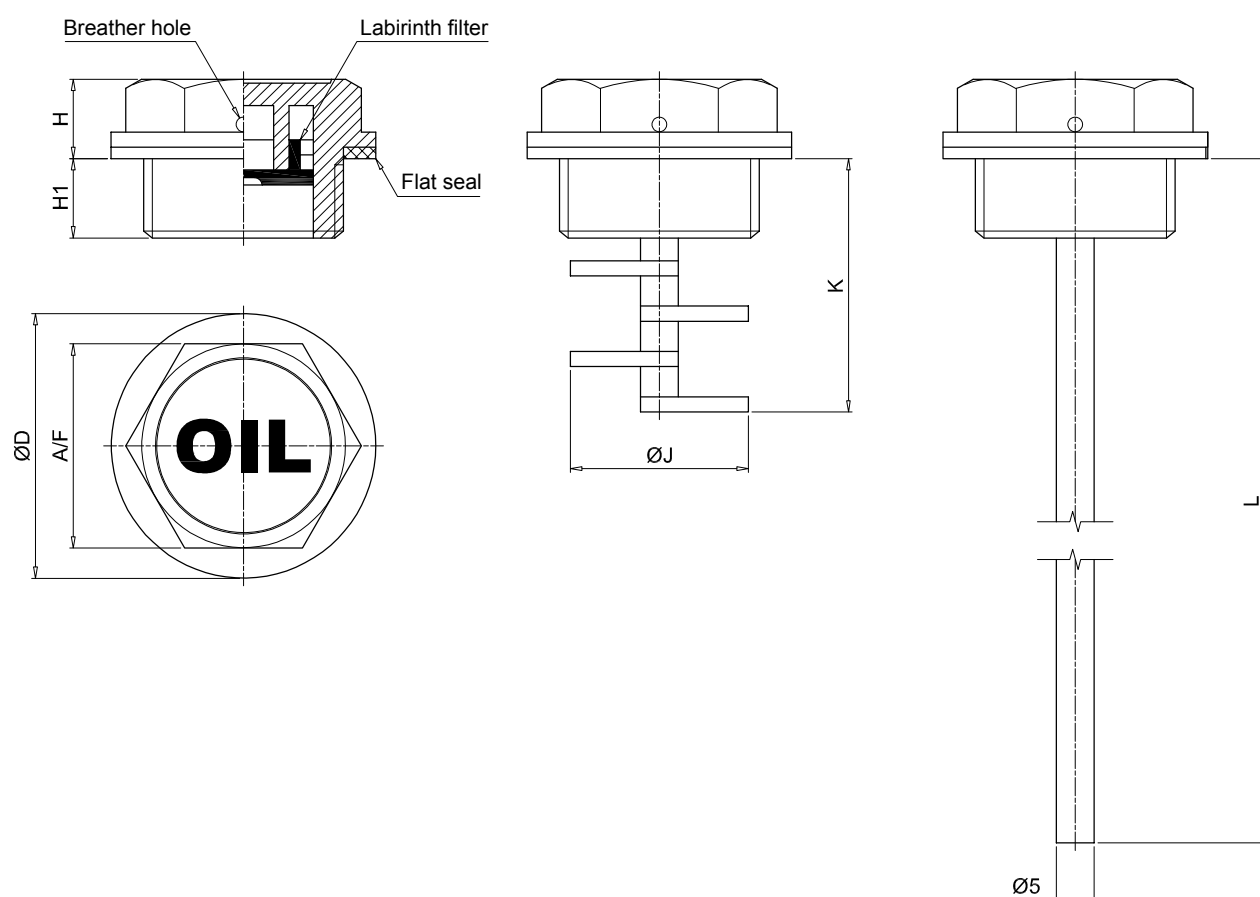
25 pcs/pack



Designation & Ordering code

COMPLETE FILLER PLUG

Series					Configuration example :		TKT	G26	N	N	A	F	S	P01
TKT														
Connections					Version									
	S	A	F	L										
G13	G 1/4"	•	•		•									
G16	G 3/8"	•	•	•	•									
G20	G 1/2"	•	•	•	•									
G26	G 3/4"	•	•	•	•									
G33	G 1"	•	•	•										
G42	G 1 1/4"	•	•	•										
G48	G 1 1/2"	•	•	•										
G60	G 2"	•	•											
Colour														
N	Black polyamide													
Cover wording														
O	Oil	N	Neutral											
Seals					Version									
	S	A	F	L										
A	NBR		•	•										
B	Inorganic fiber	•			•									
Breather hole														
S	Without breather hole				F	With breather hole								
Version														
S	Standard				F	With anti-splash feature				Execution				
A	With dipstick				L	With labyrinth filter				P01 MP Filtri standard				
										Pxx Customized				



Connections	ØD [mm]	A/F [mm]	H [mm]	H1 [mm]	ØJ [mm]	K [mm]	L [mm]
G13	20	17	8.5	7.5	-	-	205
G16	22	18	9.5	8.5	13.5	32	206
G20	28	22	9.5	9.5	17.5	33	207
G26	35	27	10.5	10.5	23.5	34	208
G33	42	34	10.5	10.5	29.5	36	201
G42	52	42	11	11	38	38	201
G48	58	47	11	11	38	36	201
G60	74	64	18	18	-	-	198

TSD GENERAL INFORMATION

Technical data

Filler / draining plugs

Polyamide filler plug

TSD is a range of polyamide compact air breathers and filler plugs for protection of the tank against the solid contamination contained into the air and filling of the fluid into the systems during the commissioning and maintenance procedures.

They are directly fitted on the tank.

Available features:

- Male threaded connections up to G 1 1/2"
- Metal filtration, to hold the coarse contamination contained into the air
- Caps with different graphics and colours, for the use in several applications
- Dipstick, to monitor the fluid level into the tank even in complicated positions
- Antisplash, to avoid fluid coming out through the air breather due to sloshing

Common applications:

- Hydraulic systems
- Mobile machines
- Industrial equipment

Materials

- Body: Polyamide
- Cover: Polyamide
- Seal: NBR
- Filter: Galvanized steel
- Anti-splash feature: Polyamide
- Dipstick: Phosphatized steel

Temperature

From -25 °C to +100 °C

Weight

TSDG16	15 g
TSDG20	25 g
TSDG26	28 g
TSDG33	60 g
TSDG42	69 g
TSDG48	74 g

Quantity

25 pcs/package

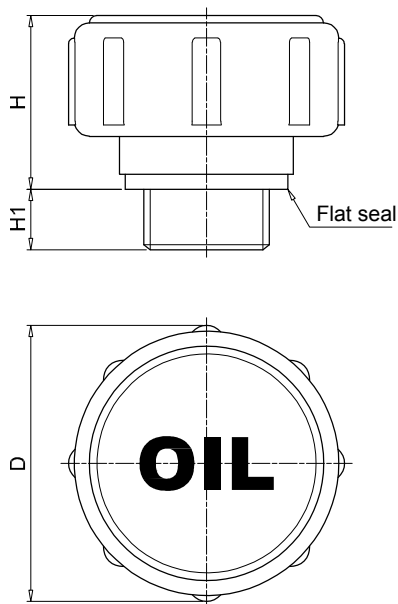


Designation & Ordering code

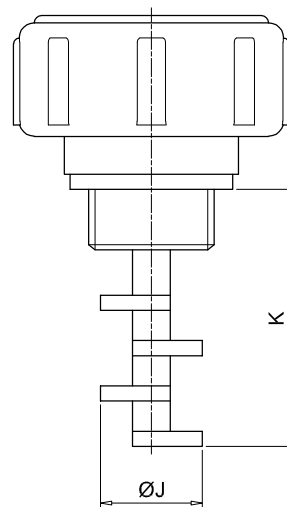
COMPLETE FILLER PLUG

Series				Configuration example : TSD G26 R G A F S P01							
TSD											
Connections											
G16	G 3/8"	G33	G 1"								
G20	G 1/2"	G42	G 1 1/4"								
G26	G 3/4"	G48	G 1 1/2"								
Cover colour											
R	Red	Y	Yellow								
Cover wording											
O	Oil										
N	Neutral										
G	Gasoil										
Seals											
A	NBR										
Filter element				Cover wording							
O	Without filter element			N	O	G					
A	Steel filter element			•	•	•					
Version											
S	Standard										
A	With dipstick										
F	With anti-splash feature										
				Execution							
				P01 MP Filtri standard							
				Pxx Customized							

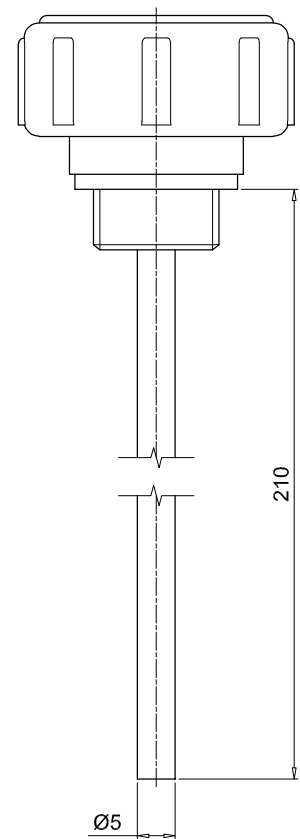
Version S



Version F



Version A



Connections	ØD [mm]	H [mm]	H1 [mm]	ØJ [mm]	K [mm]
G16	36.5	23	8	13.5	34
G20	40.5	23	9	17.5	34
G26	46.5	23	10	23.5	35
G33	52.5	24	11	29.5	42
G42	67.5	31.5	12	38	45
G48	67.5	31.5	11	38	45

Technical data

Filler / draining plugs

Aluminium drain plug

TKM is a range of aluminium compact plugs for draining of the fluid from the systems during the commissioning and maintenance procedures. They are directly fitted on the bottom of the tank. The integrated magnet holds the ferrous contamination.

Available features:

- Male threaded connections up to G 1"

Common applications:

- Hydraulic systems
- Mobile machines
- Industrial equipment

Materials

- Body: Aluminium avec insert magnétique
- Seal: Inorganic fibre

Temperature

From -25 °C to +100 °C

Weight

TKMG13	14 g
TKMG16	23 g
TKMG20	42 g
TKMG26	95 g
TKMG33	98 g

Quantity

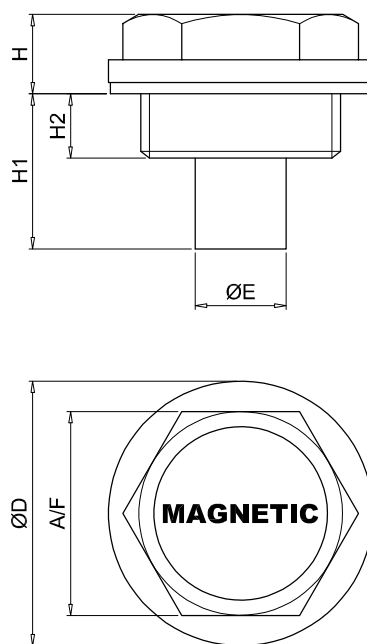
25 pcs/pack



Designation & Ordering code

COMPLETE DRAIN PLUG

Series	Configuration example :			
TKM	TKM	G20	B	P01
Connections				
G13 G 1/4"				
G16 G 3/8"				
G20 G 1/2"				
G26 G 3/4"				
G33 G 1"				
Seals				
B Inorganic fiber				
Execution				
P01 MP Filtri standard				
Pxx Customized				



Connections	$\varnothing D$ [mm]	A/F [mm]	$\varnothing E$ [mm]	H [mm]	H1 [mm]	H2 [mm]
G13	19	15	9.5	6	11.5	5.5
G16	22	18	8	9.5	13.5	7.5
G20	28	22	10	9.5	15.5	7.5
G26	35	27	12	10.5	20.5	8.5
G33	42	34	25	13	30.5	10.5

LC

The sight plugs series allow visibility of the fluid contained in the reservoirs, showing the level and also any changes in transparency and emulsion.

LV

The oil level indicators series is available for both static and mobile applications; the construction materials used make it possible to guarantee service with wide temperature variations and compatibility with all hydraulic fluids.

LVA / LVU level indicators are available with fixing centre distance from 76 to 1000 mm.

These indicators are available in three configurations, with transparent plastic body, with black plastic body and with aluminium body.

Fixing to reservoirs with unthreaded holes or with reduced thickness can be achieved using series LCC equipped with expansion kit.

Visual Oil Level Indicators



LCP - LCC
LVA - LVU

page 89
95

LCP - LCC series

Visual oil level indicator - round shape



LCP GENERAL INFORMATION

Technical data

Visual Oil Level Indicators

Visual oil level indicator - round shape

LCP is a range of plastic compact fluid level indicators, usually called spy eyes, for monitoring of the fluid level into the tank. They are directly fitted on the tank side.

Housings made of polyamide or steel can be selected, to meet every condition.

Available features:

- Male threaded connections up to G 2"
- Contrast baffle, to allow an easy monitoring of the level
- Special fixing kit, for reliable sealing even in tanks with thin walls

Common applications:

- Hydraulic systems
- Mobile machines
- Industrial equipment

T Series

Weight

LCPG13	1 g
LCPG16	2 g
LCPG20	4 g
LCPG26	8 g
LCPG33	10 g
LCPG42	12 g

Materials

- Body: Polyamide
- Contrast baffle : Polyamide
- Seals: NBR

M Series

Weight

LCPG20	6 g
LCPG26	9 g
LCPG33	13 g

Materials

- Body: Aluminium
- Lens: Thermoplastic
- Contrast baffle : Polyamide
- Seals: Inorganic fibre

N Series

Weight

LCPG13	2 g
LCPG16	4 g
LCPG20	7 g
LCPG26	9 g
LCPG30	12 g
LCPG33	18 g
LCPG42	25 g
LCPG48	48 g
LCPG60	59 g

Materials

- Body: Polyamide
- Lens: Thermoplastic
- Contrast baffle : Polyamide
- Seals: Inorganic fibre, NBR
- Special fixing kit: Brass, NBR

Temperature

From -20 °C to + 80 °C

Quantity

25 pcs/pack

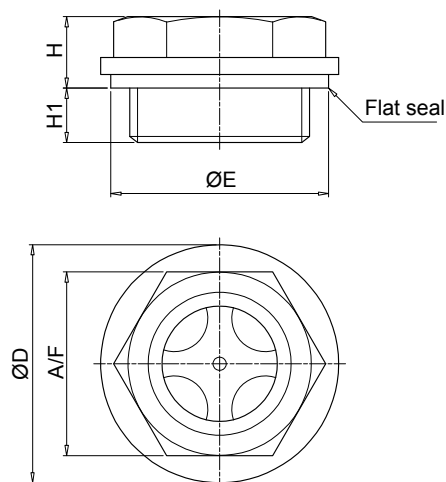


Designation & Ordering code

COMPLETE VISUAL OIL LEVEL INDICATOR

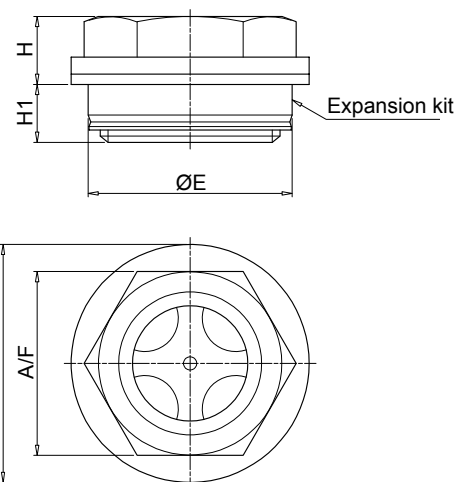
Series					Configuration example 1 :										N	S	B	S	P01										
LCP					Configuration example 2 :										LCP	G42	T	S	A		P01								
Connections					Material:	N	T	M	Configuration example 3 :										LCP	G20	M	C	A		P01				
G13		G 1/4"				•	•																						
G16		G 3/8"				•	•																						
G20		G 1/2"				•	•	•																					
G26		G 3/4"				•	•	•																					
G33		G 1"				•	•	•																					
G42		G 1 1/4"				•	•																						
G48		G 1 1/2"				•																							
G60		G 2"				•																							
Material																													
N					Black Polyamide					T					Transparent polyamide					M					Aluminium				
					Material:					N					T					M									
Contrast baffle					Connection:					G13	G16	G20	G26	G33	G42	G48	G60	G13	G16	G20	G26	G33	G42						
S		Without contrast baffle				•	•	•	•	•	•	•	•	•	•	•	•	•	•	•	•	•	•						
C		With contrast baffle				•	•	•	•	•	•	•	•	•	•	•	•	•	•	•	•	•	•						
					Material:					N					T					M									
Seals					Expansion kit:								S	K															
A		NBR							•								•					•							
B		Inorganic fiber				•																							
					Material:					N					T					M									
Special fixing kit					Connection:					G13	G16	G20	G26	G33	G42	G48	G60												
S		Without special fixing kit				•	•	•	•	•	•	•	•	•	•	•													
K		With special fixing kit				•	•	•	•	•	•	•	•	•	•	•													
Execution																													
P01		MP Filtri standard																											
Pxx		Customized																											

LCP - N



without expansion kit

Connections	ØD [mm]	ØE [mm]	A/F [mm]	H [mm]	H1 [mm]
G13	20	18.5	17	9	7
G16	22	21.5	18	10	7
G20	28	26	22	10	7
G26	35	32	27	10.5	8
G33	42	41	34	13.5	10.5
G42	52	51	42	14	11
G48	58	53.5	47	16	11
G60	74	72	64	16	18

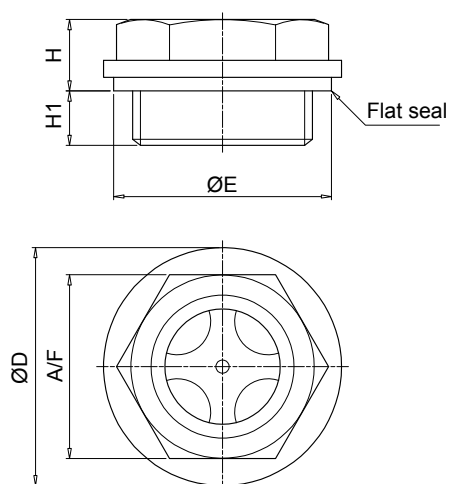


with expansion kit

Connections	ØD [mm]	ØE [mm]	A/F [mm]	H [mm]	H1 [mm]
G20	28	26	22	9	8
G26	35	30	27	10	8.5
G33	42	40	34	13	11
G42	52	50	42	13.5	11.5
G48	58	55	47	15.5	11.5

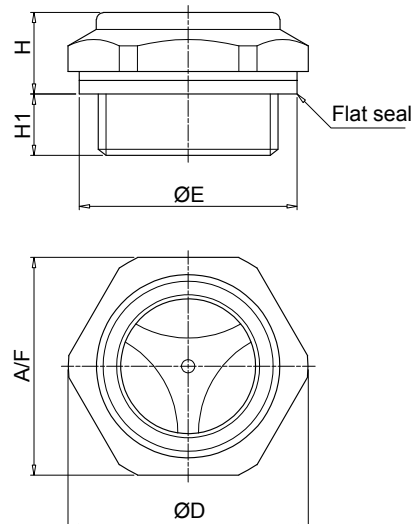
Note: for installation onto OB Cleaning covers see page 147

LCP - T



Connections	ØD [mm]	ØE [mm]	A/F [mm]	H [mm]	H1 [mm]
G13	20	18.5	15	6.5	5
G16	22	21.5	17	7	5.5
G20	28	26	21	8	6
G26	33	32	26	8.5	7
G33	41	41	32	9	8
G42	52	51	42	14	11

LCP - M



Connections	ØD [mm]	ØE [mm]	A/F [mm]	H [mm]	H1 [mm]
G20	29.5	26	27	11	7
G26	35.5	32	32	12	9
G33	44.5	41	40	13	8

Note: for installation onto OB Cleaning covers see page 147

Technical data

Visual Oil Level Indicators

Visual oil level indicator - round shape

LCC is a range of plastic compact fluid level indicators, usually called spy eyes, for monitoring of the fluid level into the tank. They are directly fitted on the tank side.

The special shape of the screen allows the monitoring of the fluid level from every position.

Available features:

- Male threaded connections up to G 2"
- Expansion kit, for reliable sealing even in tanks with thin walls

Common applications:

- Hydraulic systems
- Mobile machines
- Industrial equipment

N Series

Weight

LCCG26	7 g
LCCG42	20 g
LCCG60	40 g

Materials

- Body: Polyamide
- Lens: Polyamide
- Contrast screen: Polyamide
- Seals: Inorganic fibre, NBR
- Expansion kit: Brass / NBR

T Series

Weight

LCCG16	2 g
LCCG20	4 g
LCCG33	9 g

Materials

- Body: Polyamide
- Seals: NBR

Temperature

From -20 °C to + 80 °C

Quantity

25 pcs/pack



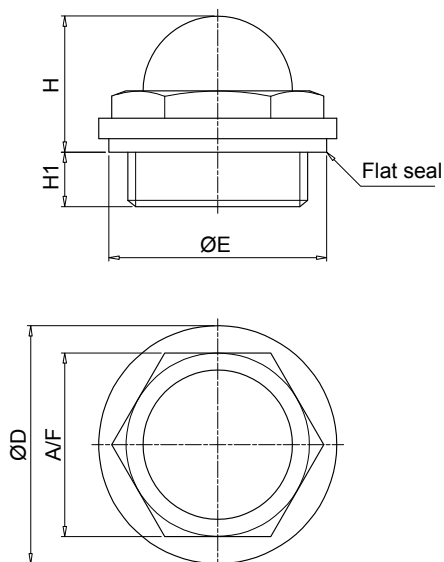
Designation & Ordering code

COMPLETE VISUAL OIL LEVEL INDICATORS

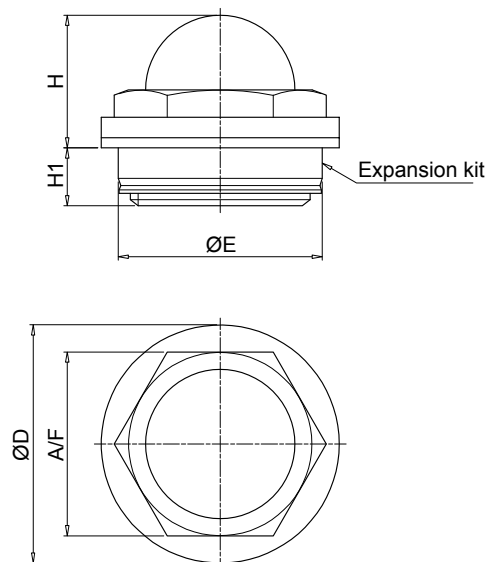
Series									
LCC									
Configuration example 1 : LCC G20 N A K P01									
Configuration example 2 : LCC G33 T A P01									
Connections			Material:		N		T		
G13	G 1/4"								
G16	G 3/8"								
G20	G 1/2"								
G26	G 3/4"								
G33	G 1"								
G42	G 1 1/4"								
G48	G 1 1/2"								
G60	G 2"								
Material									
N	Black polyamide		T	Transparent polyamide					
Seals		Material:		N		T			
A	NBR								
B	Inorganic fiber								
Expansion kit		Material:		N		T			
S	Without expansion kit								
K	With expansion kit								
Execution		Material:		N		T			
P01	MP Filtri standard								
Pxx	Customized								

LCC - N

without expansion kit



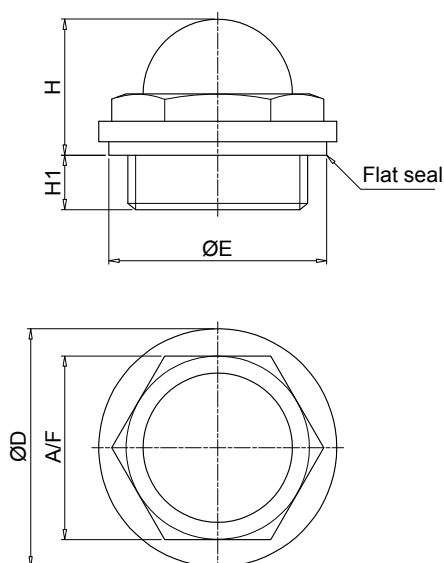
with expansion kit



Connections	ØD [mm]	ØE [mm]	A/F [mm]	H [mm]	H1 [mm]
G20	28	26	22	17.5	17.5
G26	35	32	27	20	8
G33	42	41	34	24	10
G42	52	51	44	30	11
G48	58	53.5	50	33	11.5
G60	74	72	64	39	18

Connections	ØD [mm]	ØE [mm]	A/F [mm]	H [mm]	H1 [mm]
G20	28	26	22	16.5	8.5
G26	35	30	27	19.5	8.5
G33	42	40	34	23.5	10.5
G42	52	50	44	29.5	11.5
G48	58	55	50	32.5	12

LCC - T



Connections	ØD [mm]	ØE [mm]	A/F [mm]	H [mm]	H1 [mm]
G13	19	18.5	15	12.5	5
G16	21.5	21.5	17	14	5.5
G20	27	26	21	16.5	6
G26	33	32	26	19	7
G33	40	41	32	22.5	8

LVA - LVU series

Visual oil level indicator - vertical shape



Technical data

Visual Oil Level Indicators

Oil level indicator - vertical shape

LVA is a range of plastic compact fluid level indicators for monitoring of the fluid level into the tank. They are directly fitted on the tank side. The fluid comes in through the lower connection screw and it is easily visible through the screen.

A white background plate, an orange line for the minimum level and a blue line for the maximum level allow an easy monitoring of the level.

Available features:

- Several male threaded connections, with or without nuts
- Three different sizes, to meet every size of tank
- Thermometer, to check the temperature of the fluid

Common applications:

- Hydraulic systems
- Mobile machines
- Industrial equipment

Materials

- Body: Transparent amorphous polyamide lens
- Polyamide guard
- Seal: NBR / FPM

Operating pressure

Max 1 bar at +80°C

Temperature

From -25 °C to +80 °C

Weight

LVA 10 0.13 kg
LVA 20 0.18 kg
LVA 30 0.23 kg

Quantity

10 pcs/pack



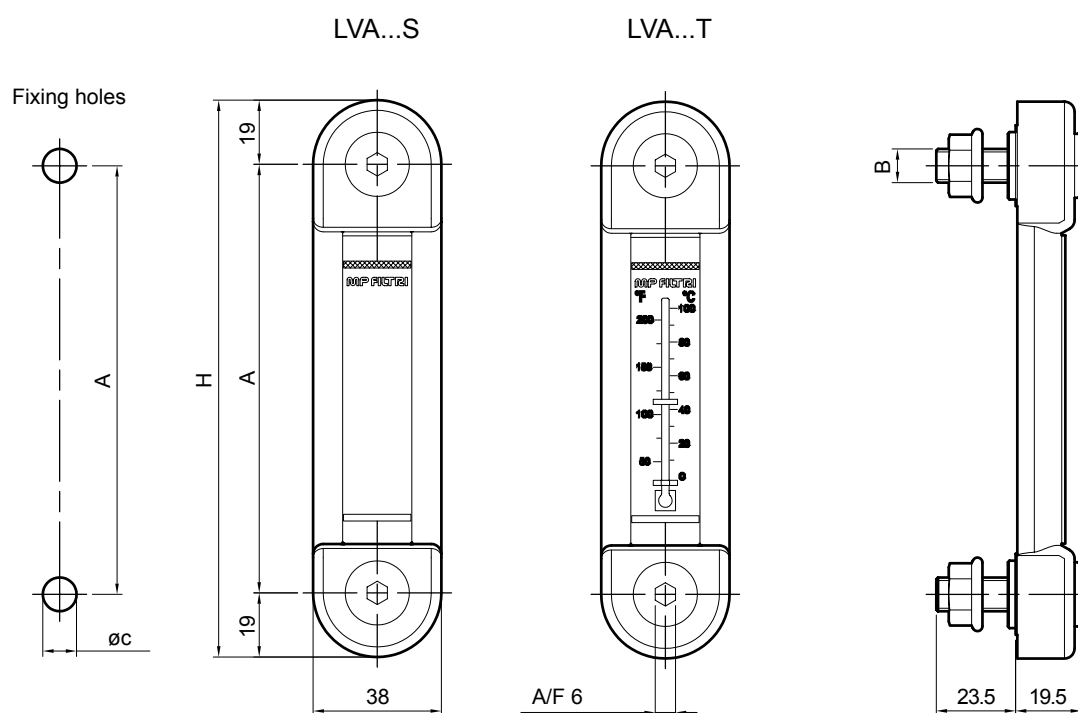
Designation & Ordering code

COMPLETE VISUAL OIL LEVEL INDICATORS

Series	Configuration example : LVA 20 T A P M10 S01						
LVA							
Size							
10 20 30							
Thermometer							
S Without thermometer							
T With thermometer							
Seals							
A NBR							
V FPM							
Cover material							
P Polyamide							
Connections							
M10 M10							
M12 M12							
U38 3/8" UNC							
U12 G 1/2" UNC							
Execution							
S01	Tag MP Filtri, with nuts						
S02	Tag MP Filtri, without nuts						

LVA		
Size	A [mm]	H [mm]
LVA10	76	114
LVA20	127	165
LVA30	254	292

Type	B [mm]	C [mm]
LVA...M10	M10	10.5
LVA...M12	M12	12.5
LVA...U38	3/8" UNC	10.0
LVA...U12	1/2" UNC	13.5



Technical data

Visual Oil Level Indicators

Oil level indicator - vertical shape

LVU is a range of plastic fluid level indicators for monitoring of the fluid level into the tank. They are directly fitted on the tank side.

The fluid comes in through the lower connection screw and it is easily visible through the screen.

A background plate, a red float and the adjustable minimum level and maximum level indicators allow an easy check of the level.

Available features:

- G 3/8" male threaded connections
- Adjustable size on request, to meet every size of tank
- Drain valve, to drop the oil for the maintenance procedures
- Glass screen and "U" protection, to meet heavy duty applications

Common applications:

- Hydraulic systems
- Mobile machines
- Industrial equipment

Materials

- Head: Polyamide
- Connection G 3/8": Nickel plated brass
- G 3/8" valve: Steel
- Seal: NBR
- Pipe: Borosilicate glass, Acrylic
- Float: Polyamide
- Protection: Aluminium
- Clamps min-max: Polyamide

Temperature

From -25 °C to +70 °C

Weight

Series	version U	version S
LVU 0500	0.780 kg	0.580 kg
LVU 1000	1.150 kg	0.790 kg
LVU 1500	1.550 kg	1.100 kg
LVU 2000	1.950 kg	1.400 kg



Designation & Ordering code

COMPLETE VISUAL OIL LEVEL INDICATORS

Series					Configuration example :					
LVU					LVU	0500	U	A	10	P01
Size										
0500 Distance between center = 500 mm										
1000 Distance between center = 1000 mm										
1500 Distance between center = 1500 mm										
2000 Distance between center = 2000 mm										
Different sizes on request										
		Size								
Body		500	1000	1500	2000					
S	Standard plexiglass	•	•	•	•					
U	Plexiglass, with “U” protection	•	•	•	•					
P	Borosilicate glass, with “U” protection	•	•	•						
Seals										
A	NBR									
V	FPM									
Connections										
10	G 3/8”									
20	G 3/8”, with drain valve									
					Execution					
					P01 MP Filtri standard					
					Pxx Customized					

Electromagnetic float level indicators use the action of a magnet fixed to the float to change the electrical status of a reed switch mounted inside the tube.

As the fluid level in the tank changes, the float moves together with the magnet that, connected with the reed switch, move the contacts thereby tripping an alarm signal.

The movement of the float is normally limited by mechanical stops because once the magnet exceeds the point at which it activates the reed switch, the switch reverts to its original status.

To invert the contact status from N.O. to N.C. and vice versa, it is sufficient to invert the float.

Electrical Oil Level Indicators



LEN - LEG - LET - LEM - LEU page 103
LVK 115

LEN - LEG - LET - LEM - LEU series

Electrical oil level indicators



Technical data

Electrical Oil Level Indicators

LEN is a range of electrical fluid level indicators for monitoring of the fluid level into the tank.

They are directly fitted on the tank.

The float moves through the rod while the fluid level changes.

A magnet, fitted into the float, turns a reed sensor fixed into the rod.

Available features:

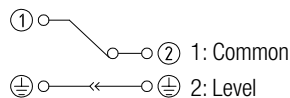
- G 1" male threaded or flanged connections
- Adjustable size on request, to meet every size of tank
- 1 or 2 floats, to monitor the minimum level, the maximum level or both of them

Common applications:

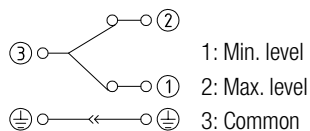
- Hydraulic systems
- Mobile machines
- Industrial equipment

Electrical symbol:

LEN 1 Float



LEN 2 Floats



Note: to invert the contact status from NC to NO and vice versa, simply invert the float.

Materials

- Flange/Threaded body: Aluminium
- Tube: Brass
- Float: Polyamide foam
- O-Ring: NBR
- Circlip: Phosphor bronze
- Contact: N.C. (Normally Closed)

Electrical data

- Protection rating: IP65
- Max switching capacity: 80 W
- Max switching current: 1 A
- Max switching voltage: 250 Vac
- Fluid specific gravity: > 0.75

Temperature

From -15 °C to + 80 °C

Weight

LEN 1 float 0.185 kg
LEN 2 floats 0.230 kg

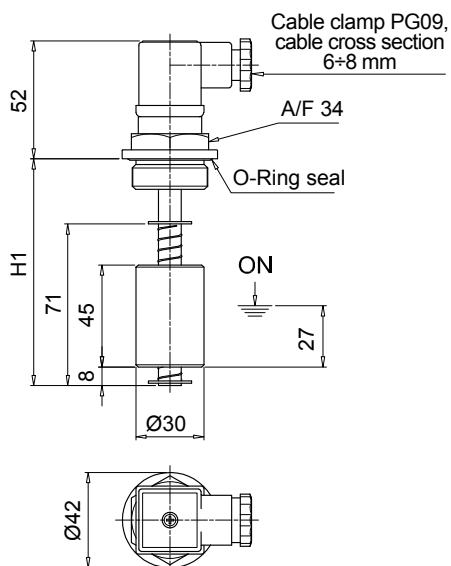


Designation & Ordering code

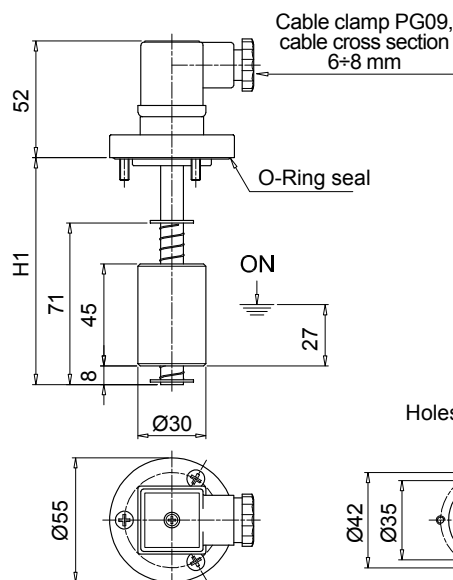
COMPLETE ELECTRICAL OIL LEVEL INDICATORS

Series	Configuration example : LEN A 350 2 A 1 A G S P01									
LEN										
Tube material										
A Brass										
Length										
150 200 250 350 400 500										
Number of floats										
1 Nr. 1 float										
2 Nr. 2 floats										
Float material										
A Polyamide foam										
Electrical switch										
1 N.C. (Normally Closed)										
Seals										
A NBR										
Connections										
G G 1"										
F Nr. 3 holes flange										
Electrical connection										
S EN 175301-803 connector										
										Execution
										P01 MP Filtri standard
										Pxx Customized

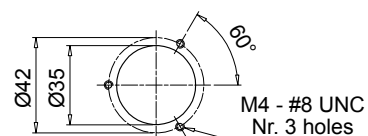
Connection "G"



Connection "F"



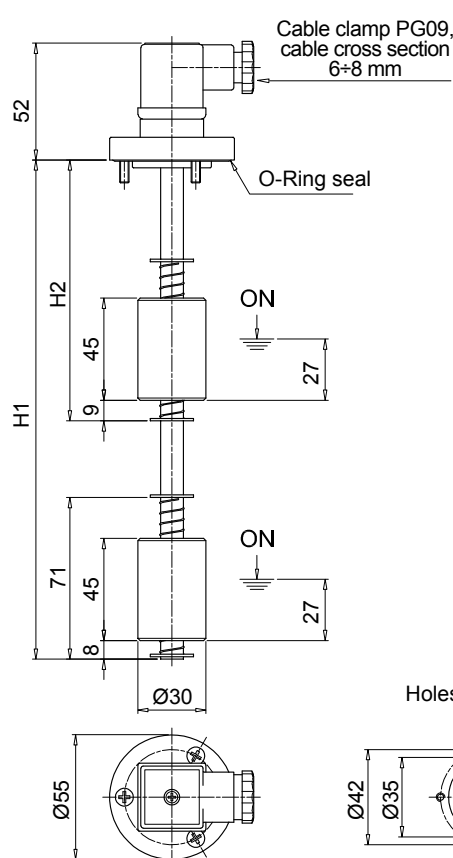
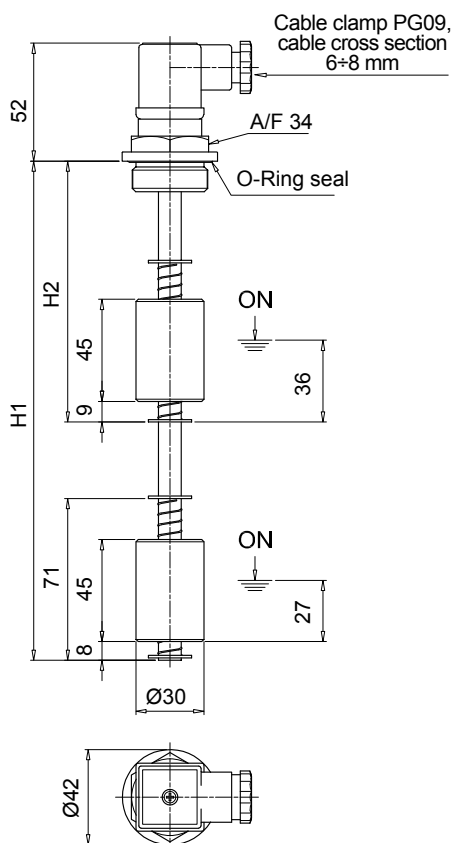
Holes on the tank



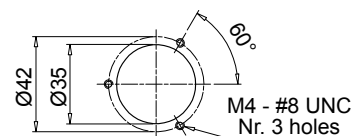
LEN

Nr. 1 float

Length	H1 [mm]
150	150
200	200
250	250
350	350
400	400
500	500



Holes on the tank



LEN

Nr. 2 floats

Length	H1 [mm]	H2 [mm]
200	200	95
250	250	105
350	350	115
400	400	115
500	500	125

LEG GENERAL INFORMATION

Technical data

Electrical Oil Level Indicators

LEG is a range of electrical fluid level indicators for monitoring of the fluid level into the tank.

They are directly fitted on the tank side.

The float moves through the rod while the fluid level changes.

A magnet, fitted into the float, turns a reed sensor fixed into the rod.

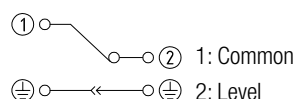
Available features:

- Flanged connections
- Adjustable size on request, to meet every size of tank
- Floating monitor for oil level check

Common applications:

- Hydraulic systems
- Mobile machines
- Industrial equipment

Electrical symbol:



Note: to invert the contact status from NC to NO and vice versa, simply invert the float.

Materials

- Flange/Threaded body: Aluminium
- Tube: Brass
- Float: Polyamide foam
- O-Ring: NBR
- Circlip: Phosphor bronze
- Contact: N.C. (Normally Closed)

Electrical data

- Protection rating: IP65
- Max switching capacity: 80 W
- Max switching current: 1 A
- Max switching voltage: 250 Vac
- Fluid specific gravity: > 0.75

The electrical properties indicated are referred to resistive loads; for capacitive and inductive loads and incandescent lamps, use protection circuits.

Temperature

From -15 °C to + 80 °C

Weight

LEG A 102 0.19 kg

LEG A 200 0.22 kg

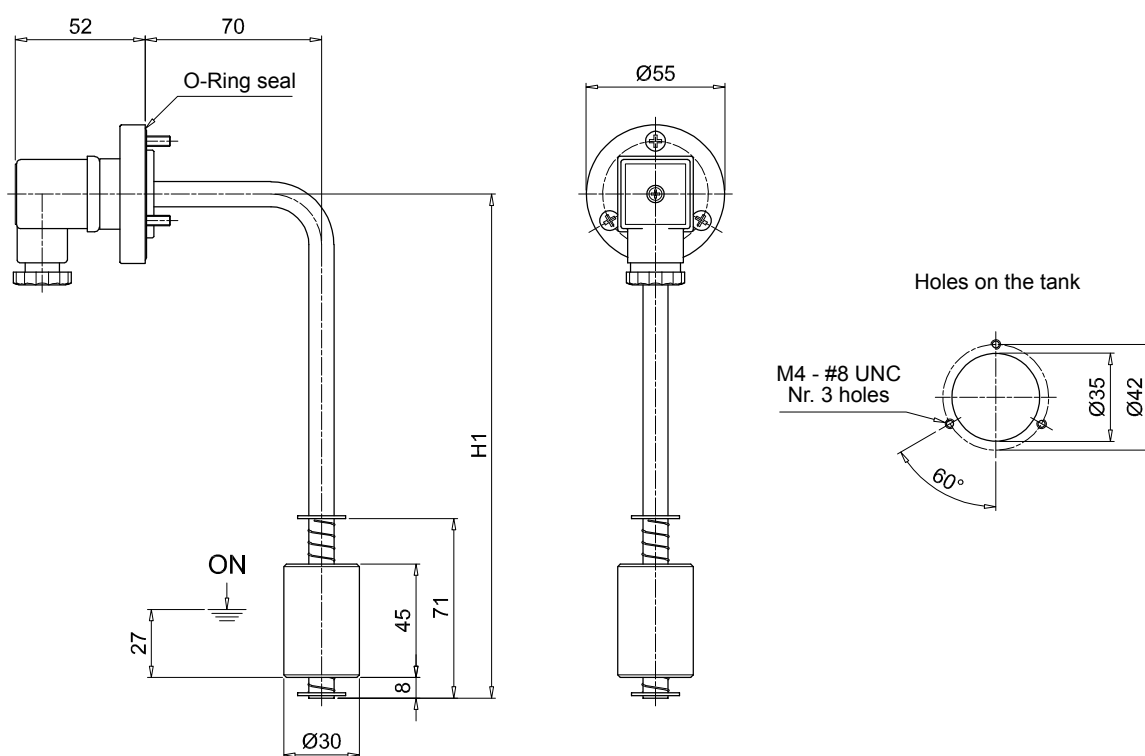


Designation & Ordering code

COMPLETE ELECTRICAL OIL LEVEL INDICATOR

Series	Configuration example :	LEG	A	200	1	A	1	A	F	S	P01
LEG											
Tube material											
A Brass											
Length											
102 200 											
Number of floats											
1 Nr. 1 float											
Float material											
A Polyamide foam											
Electrical switch											
1 N.C. (Normally Closed)											
Seals											
A NBR											
Connections											
F Nr. 3 holes flange											
Electrical connection											
S EN 175301-803 connector											
Execution											
P01 MP Filtri standard											
Pxx Customized											

LEG	
Size	H1 [mm]
LEG 102	103
LEG 200	200



Technical data

Electrical Oil Level Indicators

LET is a range of electrical fluid level indicators for monitoring of the fluid level into the tank. They are directly fitted on the tank. The float moves through the rod while the fluid level changes. A magnet, fitted into the float, turns a reed sensor fixed into the rod. The integrated thermostat allows to get a remote monitoring of the temperature.

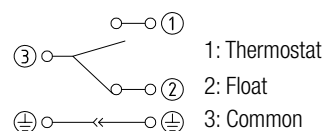
Available features:

- G 1" male threaded or flanged connections
- Adjustable size on request, to meet every size of tank
- Floating monitor for oil level check

Common applications:

- Hydraulic systems
- Mobile machines
- Industrial equipment

Electrical symbol:



Note: to invert the contact status from NC to NO and vice versa, simply invert the float.

Materials

- Flange/Threaded body: Aluminium
- Tube: Brass
- Float: Polyamide foam
- O-Ring: NBR
- Circlip: Phosphor bronze
- Contact: N.C. (Normally Closed)

Electrical data

- Protection rating: IP65
- Max switching capacity: 80 W
- Max switching current: 1 A
- Max switching voltage: 250 Vac
- Fluid specific gravity: > 0.75

Temperature

From -15 °C to + 80 °C

Weight

LET A 200	0.20 kg
LET A 300	0.23 kg
LET A 400	0.28 kg



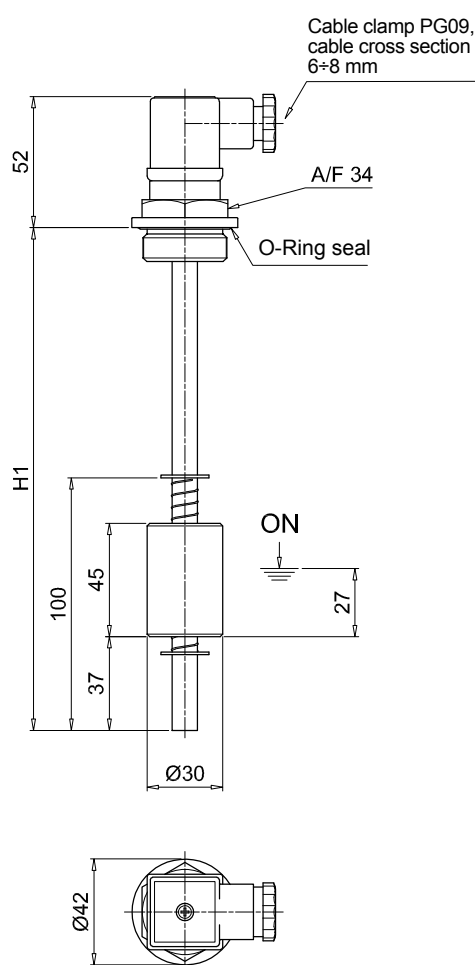
Designation & Ordering code

COMPLETE ELECTRICAL OIL LEVEL INDICATOR

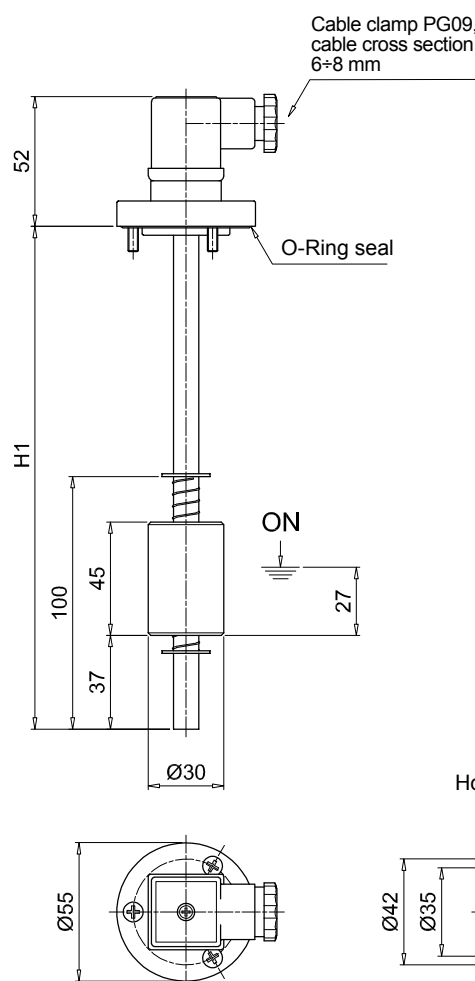
Series	Configuration example :	LET	A	300	1	A	1	A	F	S	50	P01
LET												
Tube material												
A Brass												
Length												
200 300 400												
Number of floats												
1 Nr. 1 float												
Float material												
A Polyamide foam												
Electrical switch												
1 N.C. (Normally Closed)												
Seals												
A NBR												
Connections												
G G 1"												
F Nr. 3 holes flange												
Electrical connection												
S EN 175301-803 connector												
Thermostat setting												
50 50°C N.O. (Normally Open)												
Execution												
P01 MP Filtri standard												
Pxx Customized												

LET	
Length	H1 [mm]
200	200
300	300
400	400

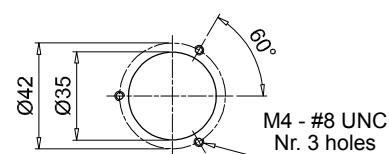
Connection "G"



Connection "F"



Holes on the tank



Technical data

Electrical Oil Level Indicators

LEM is a range of electrical fluid level indicators for monitoring of the fluid level into the tank. They are directly fitted on the tank. The float moves through the rod while the fluid level changes. A magnet, fitted into the float, turns a reed sensor fixed into the rod. The setting point is adjustable on site, with few easy actions.

Available features:

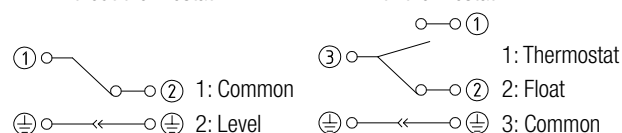
- Flanged connections
- Adjustable size to meet every size of tank
- Floating monitor for oil level check
- Integrated thermostat, to get a remote monitoring of the temperature

Common applications:

- Hydraulic systems
- Mobile machines
- Industrial equipment

Electrical symbol:

LEM without thermostat



Note: to invert the contact status from NC to NO and vice versa, simply invert the float.

Materials

- Flange/Threaded body: Aluminium
- Tube: Brass
- Float: Polyamide foam
- O-Ring: NBR
- Circlip: Phosphor bronze
- Float contact: N.C. reed, N.O. (on request)
- Thermostat contact: N.O., N.C. (on request)

Electrical data

- Protection rating: IP65
- Max switching capacity: 80 W
- Max switching current: 1 A
- Max switching voltage: 250 Vac
- Fluid specific gravity: > 0.75

Temperature

From -15 °C to + 80 °C

Weight

LEM 0.406 kg



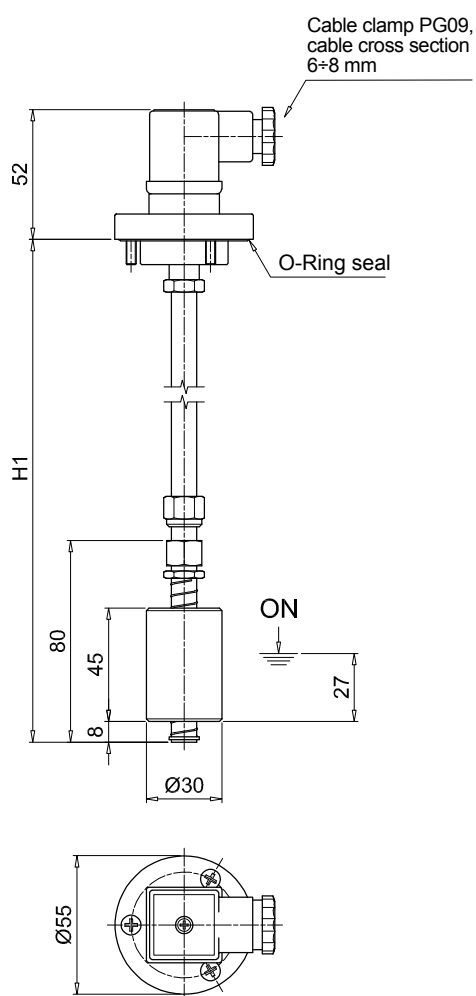
Designation & Ordering code

COMPLETE ELECTRICAL OIL LEVEL INDICATOR

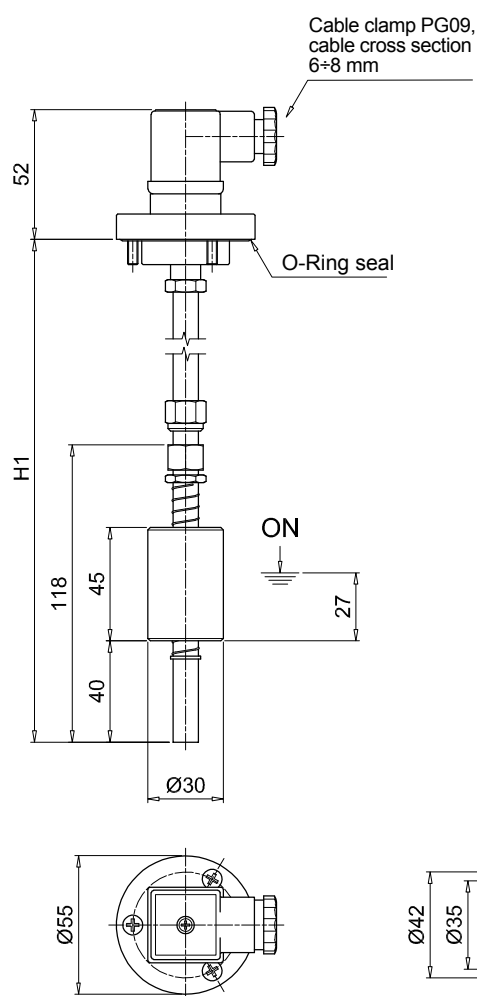
Series		Configuration example :									
LEM		A	1000	1	A	1	A	F	S	60	P01
Tube material											
A	Brass										
Length											
500	1000										
Number of floats											
1	Nr. 1 float										
Float material											
A	Polyamide foam										
Electrical switch											
1	N.C. (Normally Closed)										
Seals											
A	NBR										
Connections											
F	Nr. 3 holes flange										
Electrical connection											
S	EN 175301-803 connector										
Thermostat setting											
00	Without thermostat										
60	60°C N.O. (Normally Open)										
Execution											
P01	MP Filtri standard										
Pxx	Customized										

LEM	
Length	H1 [mm]
500	500
1000	1000

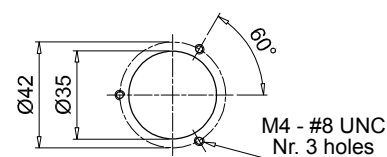
Without thermostat



With thermostat



Holes on the tank



Technical data

Electrical Oil Level Indicators

LEU is a range of electrical fluid level indicators for monitoring of the fluid level into the tank. They are directly fitted on the tank.

The float moves through the rod while the fluid level changes.

A magnet, fitted into the float, turns a reed sensor fixed into the rod.

The setting point is adjustable on site, with few easy actions.

They are made of stainless steel, to meet every heavy duty application.

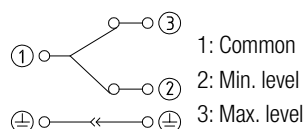
Available features:

- Flanged connections
- Setting size for each tank type
- Double Floating monitor for oil level check

Common applications:

- Hydraulic systems
- Mobile machines
- Industrial equipment

Electrical symbol:



Note: to invert the contact status from NC to NO and vice versa, simply invert the float.

Materials

- Flange / Threaded body: Aluminium
- Tube: AISI 304
- Float: NBR, AISI 316 (on request)
- O-Ring: NBR
- Circlip: AISI 304
- Float contact: N.C. reed, N.O. (on request)

Electrical data

- Protection rating: IP65
- Max switching capacity: 50 W
- Max switching current: 0.5 A
- Max switching voltage: 250 Vac
- Fluid specific gravity: > 0.75

Temperature

From -15 °C to + 80 °C

Weight

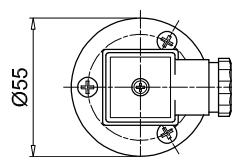
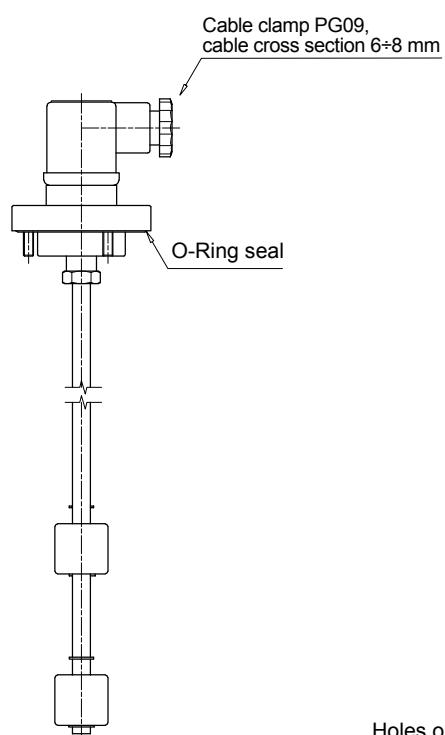
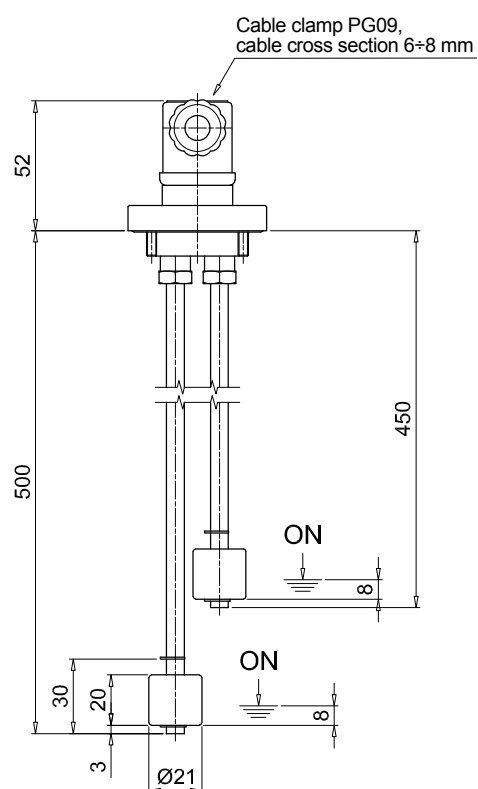
LEU 0.415 kg



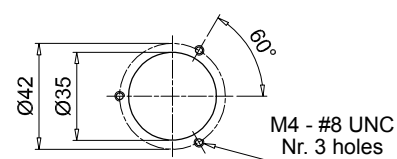
Designation & Ordering code

COMPLETE ELECTRICAL OIL LEVEL INDICATOR

Series	Configuration example :															LEU	B	2	B	1	A	F	S	P01
LEU																								
Tube material																								
B	AISI 304																							
Number of floats																								
2	Nr. 2 floats																							
Float material																								
B	NBR																							
Electrical switch																								
1	N.C. (Normally Closed)																							
Seals																								
A	NBR																							
Connections																								
F	Nr. 3 holes flange																							
Electrical connection																								
S	EN 175301-803 connector																							
																		Execution						
																		P01	MP Filtri standard					
																		Pxx	Customized					

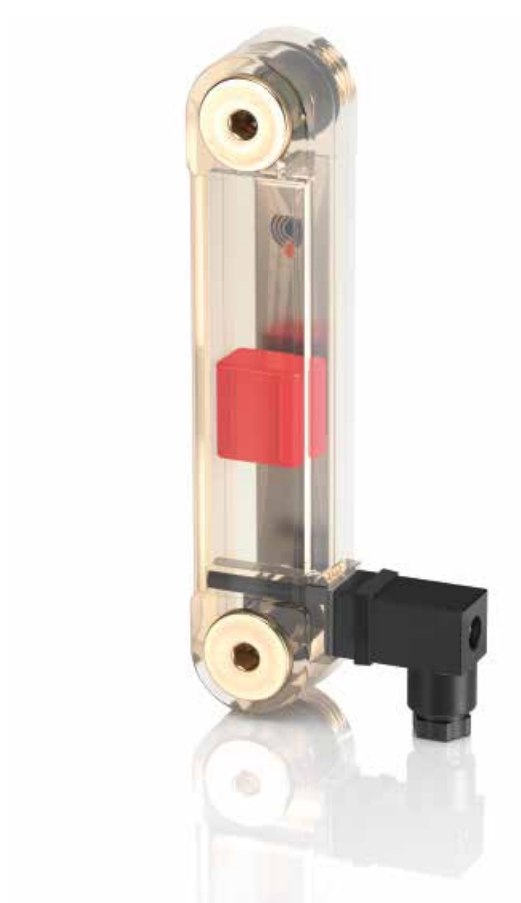


Holes on the tank



LVK series

Electrical and visual oil level indicator



Technical data

Electrical Oil Level Indicators

LVK is a range of electrical and visual fluid level indicators for monitoring of the fluid level into the tank. They are directly fitted on the tank side. The float moves through the indicator housing while the fluid level changes.

Available features:

- Several male threaded connections
- Three different sizes, to meet every size of tank
- Thermometer, thermostat or PT100, to check the temperature of the fluid

Common applications:

- Hydraulic systems
- Mobile machines
- Industrial equipment

Electrical symbol:

see page. 118

Materials

- Head: Polyamide
- Screws: Nickel plated brass (standard), AISI 314 (optional)
- Seal: NBR (standard), FPM (optional)
- Float: Polyamide
- Sensor thermometer: Screw + thermometer

Temperature

From -20 °C to + 80 °C

Weight

LVK 10	0.140 kg
LVK 20	0.170 kg
LVK 30	0.250 kg



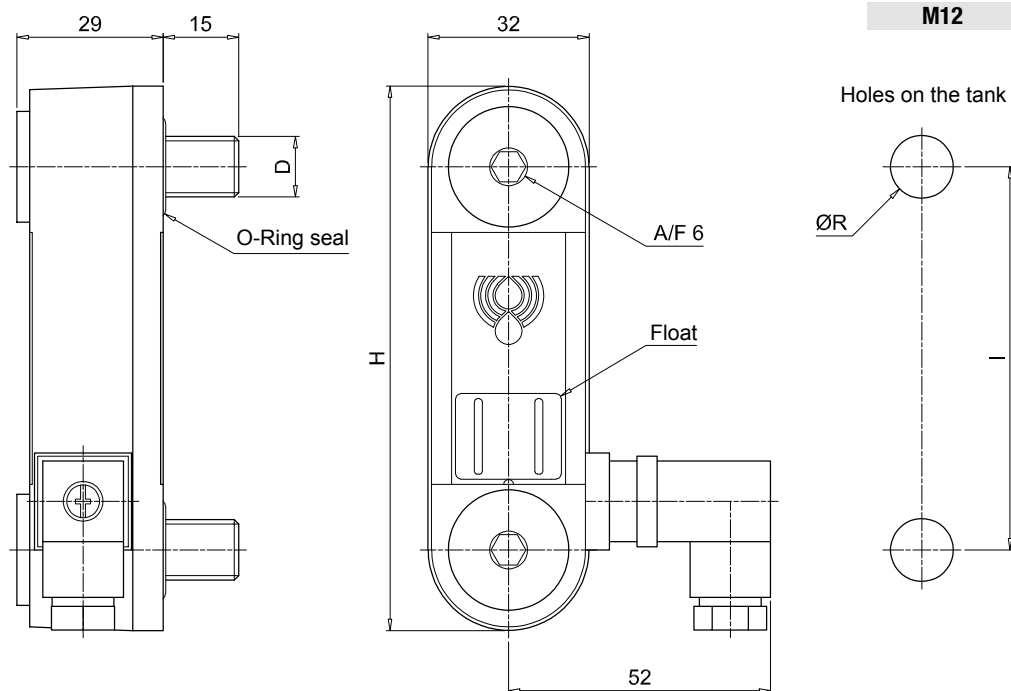
Designation & Ordering code

COMPLETE ELECTRICAL AND VISUAL OIL LEVEL INDICATORS

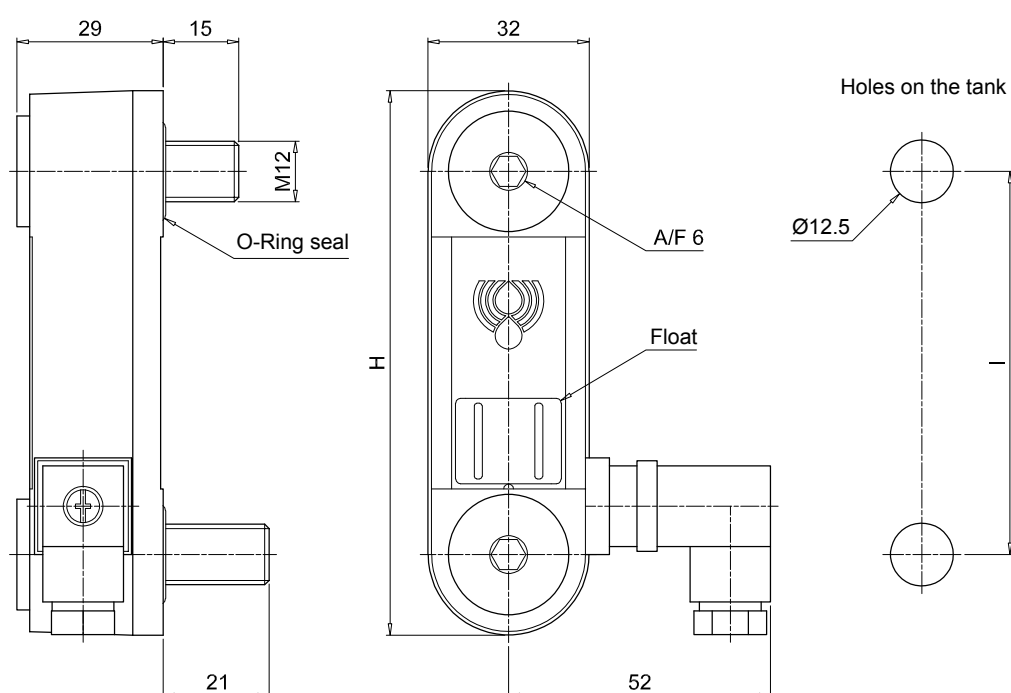
Series				Configuration example : LVK 20 A M12 1 T 5 P01								
LVK												
Length												
10	20	30										
Seals												
A	NBR											
Connections												
M10	Screws M10		M12	Screws M12								
Electrical switch in absence of fluid												
1	N.O. (Normally Open)											
2	N.C. (Normally Closed)											
3	SPDT (single-pole, double throw)											
Version		Connection										
		M10	M12									
S	Standard	•	•									
T	With thermostat		•									
P	With PT100 sensor		•									
Thermostat setting		Version										
		S	T	P								
S	Standard (no setting)	•		•								
1	50°C N.O. (Normally Open)		•									
2	60°C N.O. (Normally Open)		•									
3	70°C N.O. (Normally Open)		•									
5	50°C N.C. (Normally Closed)		•									
6	60°C N.C. (Normally Closed)		•									
7	70°C N.C. (Normally Closed)		•									
Execution												
P01	MP Filtri standard											
Pxx	Customized											

LVK		
Size	H [mm]	I [mm]
10	108	76
20	159	127
30	286	254
Connections	D [mm]	ØR [mm]
M10	M10	10.5
M12	M12	12.5

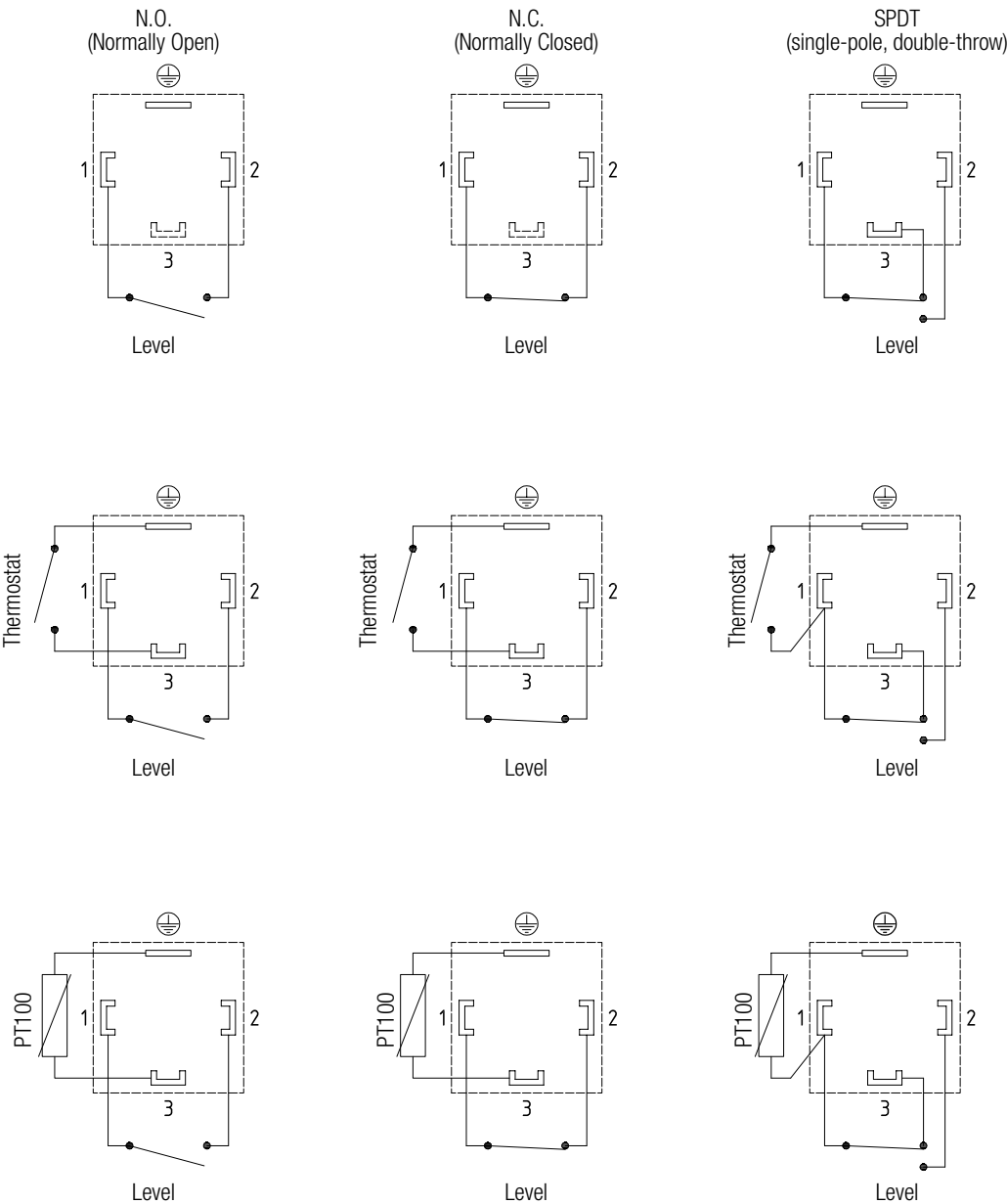
Without thermostat



With thermostat



Electrical symbols



EM1 & SVM gauge isolator valves are designed to protect pressure gauges from pressure shocks when the pressure reading is not required.

FTA/FTR flanges make it possible to fix suction and return lines on the reservoir cover.

MULTIFIX fixing clamps make it possible to install various pipelines of different types and diameters, rapidly, easily, and, more importantly, economically.

CLEANING COVERS, facilitating the maintenance of oil tanks in hydraulic power units, without necessarily having to dismantle the unit.

ALUMINIUM TANKS of 10 litres capacity, allowing the assembly of a compact hydraulic power unit.

Accessories



EM1	page 123
SVM	129
FTA - FTR	133
MULTIFIX SFT	137
OB	143
SE10LT	149

EM1 series

Pressure gauge isolator



EM1 GENERAL INFORMATION

Technical data

Accessories

Pressure gauge isolator

Gauge isolator valves are designed to protect pressure gauges from pressure shocks when the pressure reading is not required; after each reading setting the selector to the closed position serves to depressurise the pressure gauge by means of the T fitting connected to the reservoir.

Working instructions:

- Button not pressed: pressure gauge isolated
- Button pressed: pressure gauge reading
- Button pressed and turned (either to left or right): button remains in position and pressure gauge measures pressure continuously.
- To isolate the pressure gauge from pressure reading, turn the button until it returns to the not pressed position.

Materials A-B

- Body: Cast iron
- Pin: Steel
- Seals: NBR, FPM
- Knob/cover: Polyamide
- Stop ring: Steel
- Spring: Steel
- Nameplate: Aluminium
- Nut-screw: Galvanized steel

Materials C

- Body: Cast iron
- Pin: Steel
- Seals: NBR, FPM
- Knob/cover: Polyamide
- Stop ring: Steel
- Spring: Steel
- Nameplate: Aluminium
- Nut-screw: Galvanized steel
- Plug: Anodized steel

Operating pressure

400 bar

Operating temperature

From -25 °C to + 100 °C

Weight

EM1 version A	0.41 kg
EM1 version B	0.44 kg
EM1 version C	1.00 kg



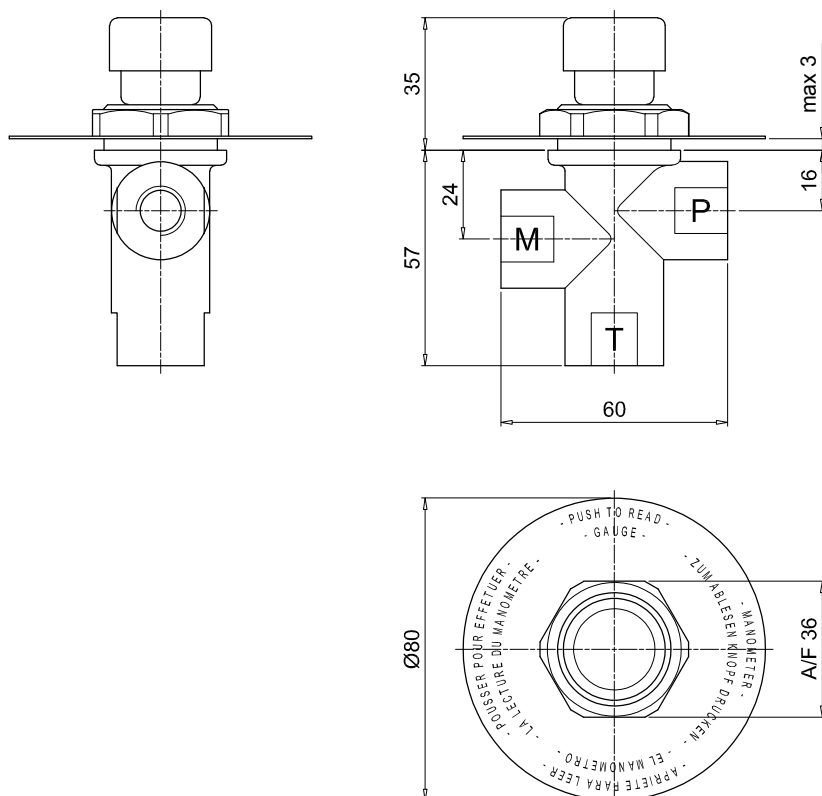
Designation & Ordering code

COMPLET PRESSURE-GAUGE ISOLATOR

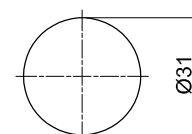
Series	Configuration example :				
EM1	EM1	A	G2	A	P01
Version					
A Threaded connections, panel mount with hex nut					
B Threaded connections, panel mount with screws					
C Manifold/threaded connections, panel mount with screws					
Connection					
G1 G 1/4"					
G2 1/4" NPT					
G3 SAE 5 - 1/2" - 20 UNF					
Seals					
A NBR					
V FPM					
Execution					
P01 MP Filtri standard					
Pxx Customized					

EM1

version A

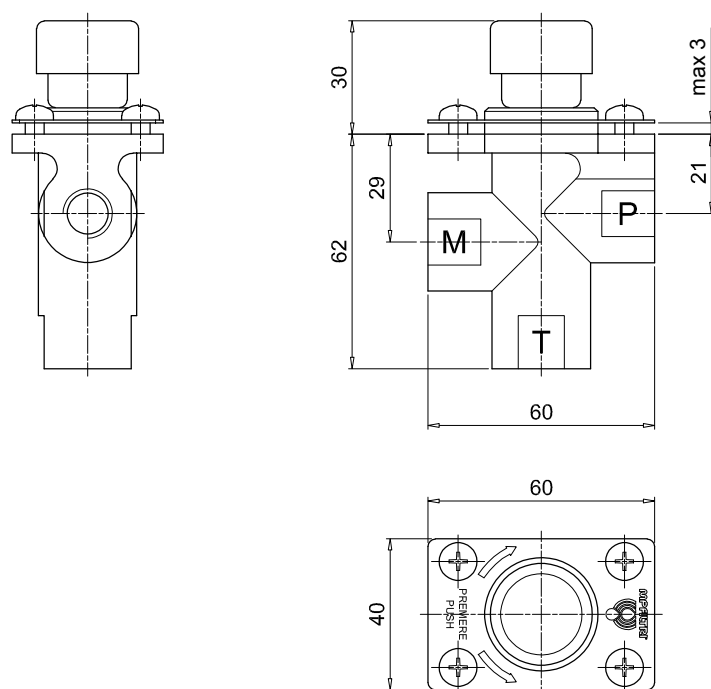


Holes on the panel

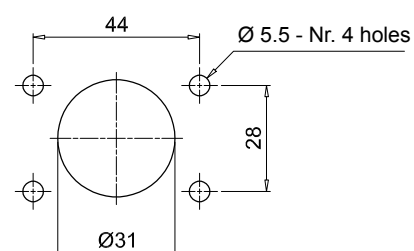


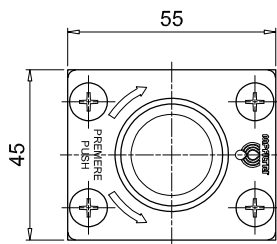
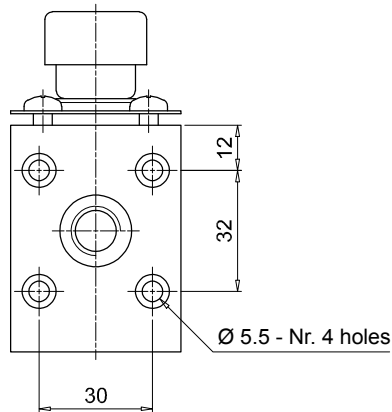
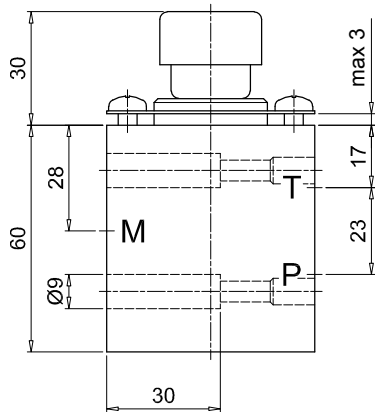
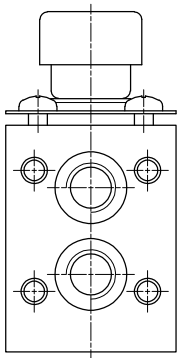
EM1

version B

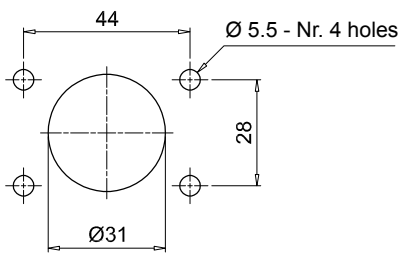


Holes on the panel





Holes on the panel



SVM series

Gauge selector valve



Technical data

Accessories

Gauge selector valve

Gauge isolator valves are designed to protect pressure gauges from pressure shocks when the pressure reading is not required; after each reading setting the selector to the closed position serves to depressurize the pressure gauge by means of the T fitting connected to the reservoir.

Working instructions:

- Knob not pressed: pressure gauge isolated
- Knob pressed: pressure gauge reading
- Knob pressed and turned: the knob remains in position and pressure gauge measures pressure continuously.
- To isolate the pressure gauge from pressure reading, turn the button until it returns to the not pressed position.

Materials

- Body: Cast iron
- Pin: Steel
- Seals: NBR, FPM
- Cover: Anodized aluminium
- Flange: Anodized aluminium
- Knob: Polyamide
- Ringnut: Polyamide
- Nut-screw: Galvanized steel, Phosphatized steel

Operating pressure

400 bar

Operating temperature

From -25 °C to + 100 °C

Weight

SVM version 3 1.547 kg
SVM version 6 1.507 kg

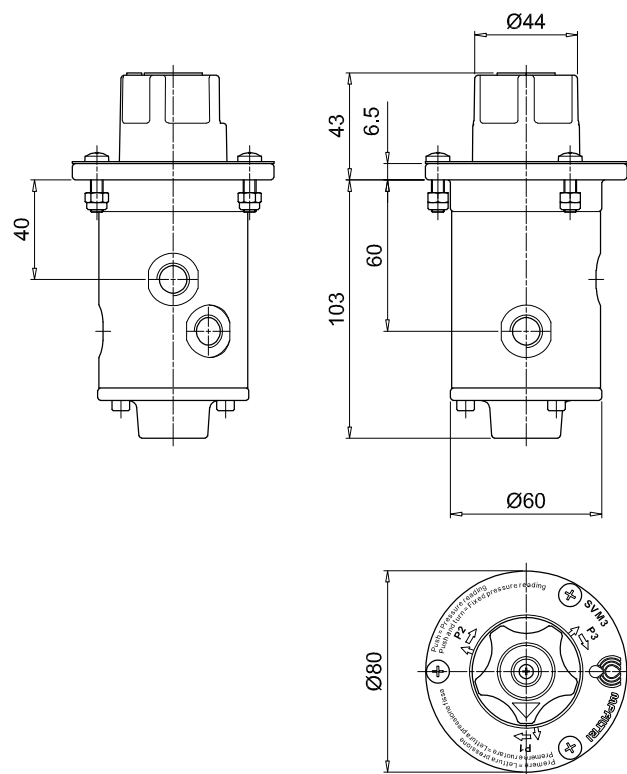


Designation & Ordering code

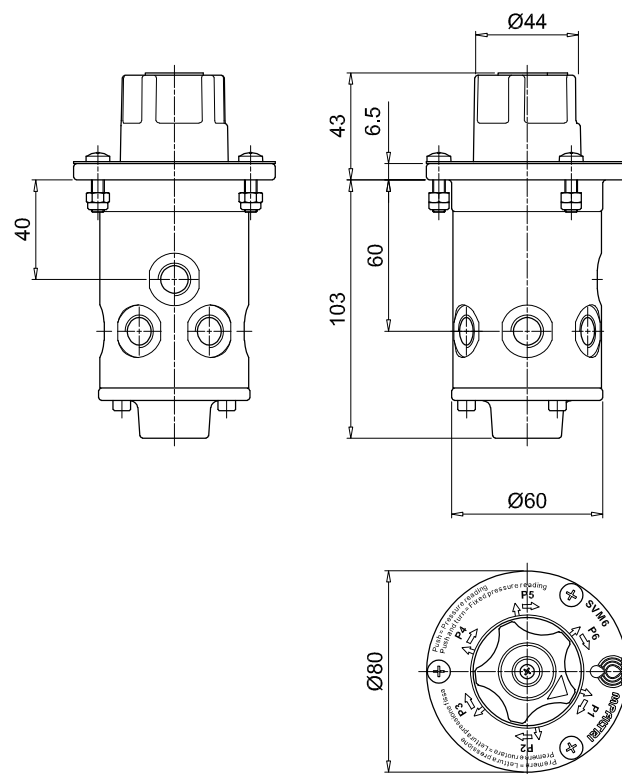
COMPLETE GAUGE ISOLATOR VALVE

Series	Configuration example : SVM 3 G1 A P01				
SVM					
Version					
3 3 pressure ports					
6 6 pressure ports					
Connection					
G1 G 1/4"					
G2 1/4" NPT					
G3 SAE 5 - 1/2" - 20 UNF					
Seals					
A NBR					
V FPM					
Execution					
P01 MP Filtri standard					
Pxx Customized					

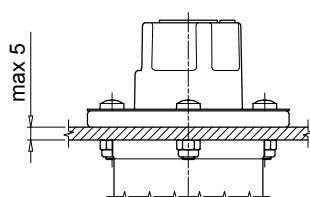
SVM
version 3



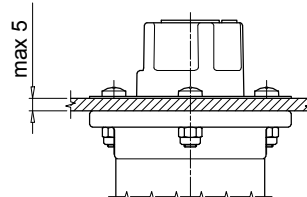
SVM
version 6



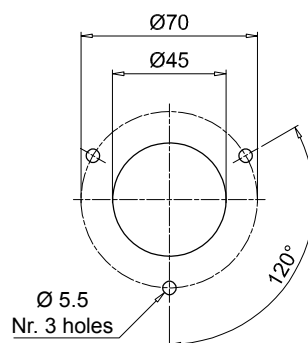
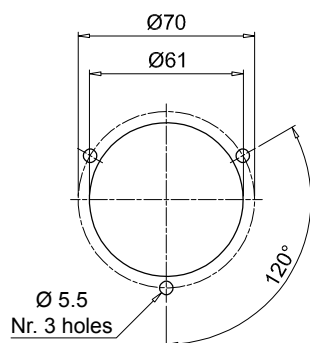
External mount



Internal mount



Holes on the panel



FTA -FTR series

Oil tank fixing flange



FTA - FTR GENERAL INFORMATION

Technical data

Accessories

Oil tank fixing flange

FT flanges make it possible to fix suction and return lines on the reservoir cover.

Fitting a flexible insert allows separation of pipes.

Both rigid pipes and flexible hoses can be separated from the reservoir walls, absorbing vibration and reducing plant noise emissions.

Operating temperature

From -25 °C to + 100 °C

Materials

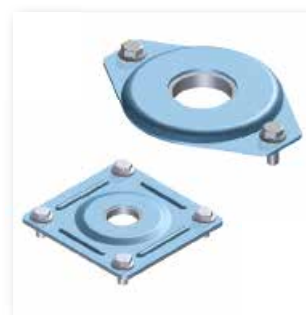
- Flange: Galvanized steel
- Flange seal: Inorganic fibre
- Tube seal: NBR
- Screw: Galvanized steel

Weight FTA

FTA 1215	0.590 kg
FTA 1620	0.570 kg
FTA 2225	0.550 kg
FTA 2630	0.530 kg
FTA 3235	0.500 kg
FTA 3842	0.520 kg
FTA 4850	0.920 kg
FTA 6061	0.900 kg
FTA 7577	0.860 kg
FTA 8789	0.830 kg

Weight FTR

FTR 0610	0.450 kg
FTR 1215	0.430 kg
FTR 1620	0.400 kg
FTR 2225	0.100 kg
FTR 2630	0.103 kg
FTR 3235	0.980 kg
FTR 3842	0.950 kg
FTR 4850	0.900 kg
FTR 6061	0.850 kg

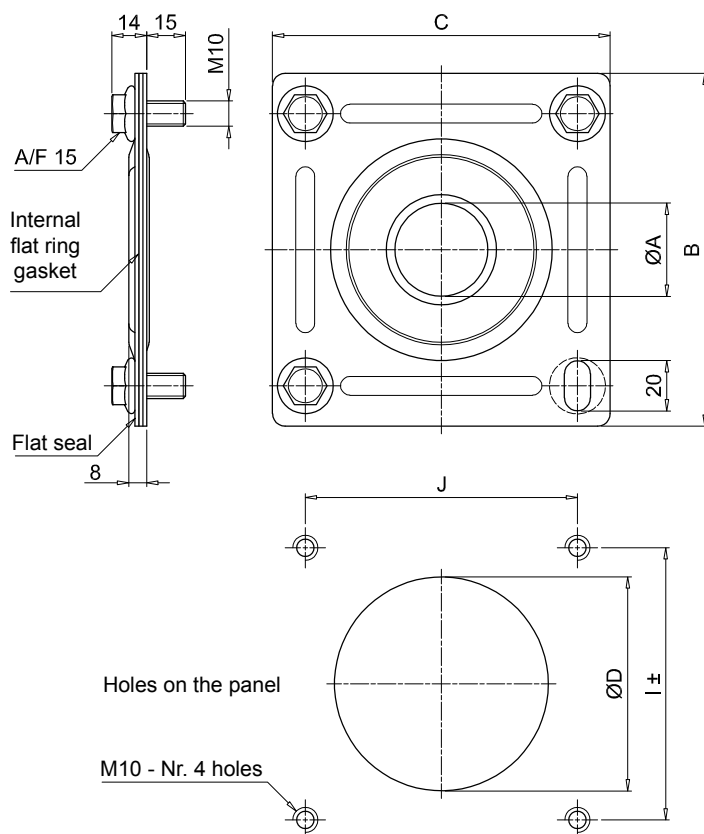


Designation & Ordering code

COMPLETE OIL TANK FIXING FLANGE

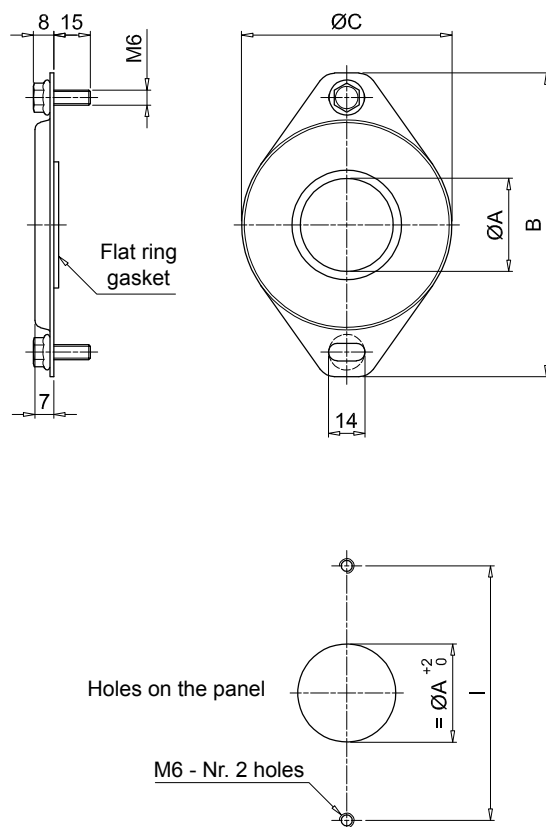
Series		Configuration example : FTA 2630 G A P01				
FTA		FTR				
Size		FTA	FTR			
0610	Pipe Ø06 ÷ 10 mm		•			
1215	Pipe Ø12 ÷ 15 mm	•	•			
1620	Pipe Ø16 ÷ 20 mm	•	•			
2225	Pipe Ø22 ÷ 25 mm	•	•			
2630	Pipe Ø26 ÷ 30 mm	•	•			
3235	Pipe Ø32 ÷ 35 mm	•	•			
3842	Pipe Ø38 ÷ 42 mm	•	•			
4850	Pipe Ø48 ÷ 50 mm	•	•			
6061	Pipe Ø60 ÷ 61 mm	•	•			
7577	Pipe Ø75 ÷ 77 mm	•				
8789	Pipe Ø87 ÷ 89 mm	•				
Flange seals		FTA	FTR			
G	Inorganic fiber	•				
O	Without seal		•			
Pipe seals						
A	NBR					
Execution						
P01	MP Filtri standard					
Pxx	Customized					

FTA



Size	ØA [mm]		B [mm]	C [mm]	ØD [mm]	I [mm]	J [mm]
	min	max					
1215	12	15	140	134	85	108±1	108
1620	16	20					
2225	22	25					
2630	26	30					
3235	32	35					
3842	38	42	190	184	130	159±4	159
4850	48	50					
6061	60	61					
7577	75	77					
8789	87	89					

FTR



Size	ØA [mm]		B [mm]	ØC [mm]	I [mm]
	min	max			
0610	6	10	71	40	54
1215	12	15			
1620	16	20			
2225	22	25	121	84	102
2630	26	30			
3235	32	35			
3842	38	42			
4850	48	50			
6061	60	61			

MULTIFIX SFT series

Fixing clamps



Technical data

Accessories

Fixing clamps

MULTIFIX fixing clamps are particularly suitable when a series of pipelines must be installed requiring neat and high precision installation. These brackets make it possible to install various pipelines of different types and diameters, rapidly, easily, and, more importantly, economically.

MULTIFIX clamps support, guide, and absorb impact and vibration, protecting the pipes and dispensing with the need for complex and unsightly mounting systems with angle clamps etc.

An orderly layout facilitates maintenance resulting in significant savings in running costs; it also allows intuitive visual design of the plant, which can be assembled easily even without specialised labour.

Materials

- Pair of brackets: Galvanized steel
- Bush: NBR
- Spacer: Steel
- Studs: Steel
- Screws: Steel
- Foot and screw: Steel

Weight

SFT 38 1	0.050 kg
SFT 51 1	0.100 kg
SFT 78 1	0.570 kg

Operating temperature

From -25 °C to + 100 °C



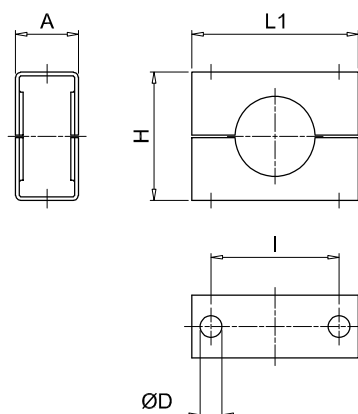
Designation & Ordering code

COMPLETE FIXING CLAMP

Serie					Configuration example :			
SFT					SFT	51	19	P01
Size								
38	Height 38 mm - 1 1/2"							
51	Height 51 mm - 2"							
78	Height 78 mm - 3"							
Number of pipe		38	51	78				
1	Single pipe	•	•	•				
16	Nr. 16 pipes			•				
19	Nr. 19 pipes		•					
26	Nr. 26 pipes	•						
Execution								
P01	MP Filtri standard							
Pxx	Customized							

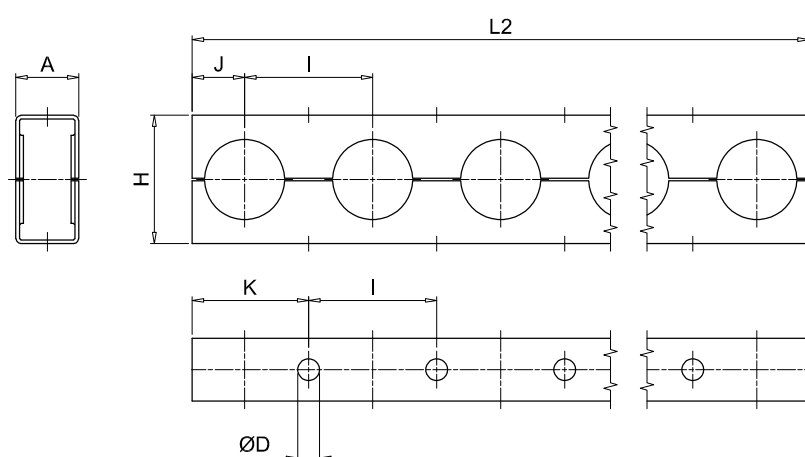
SFT

Single pipe



SFT

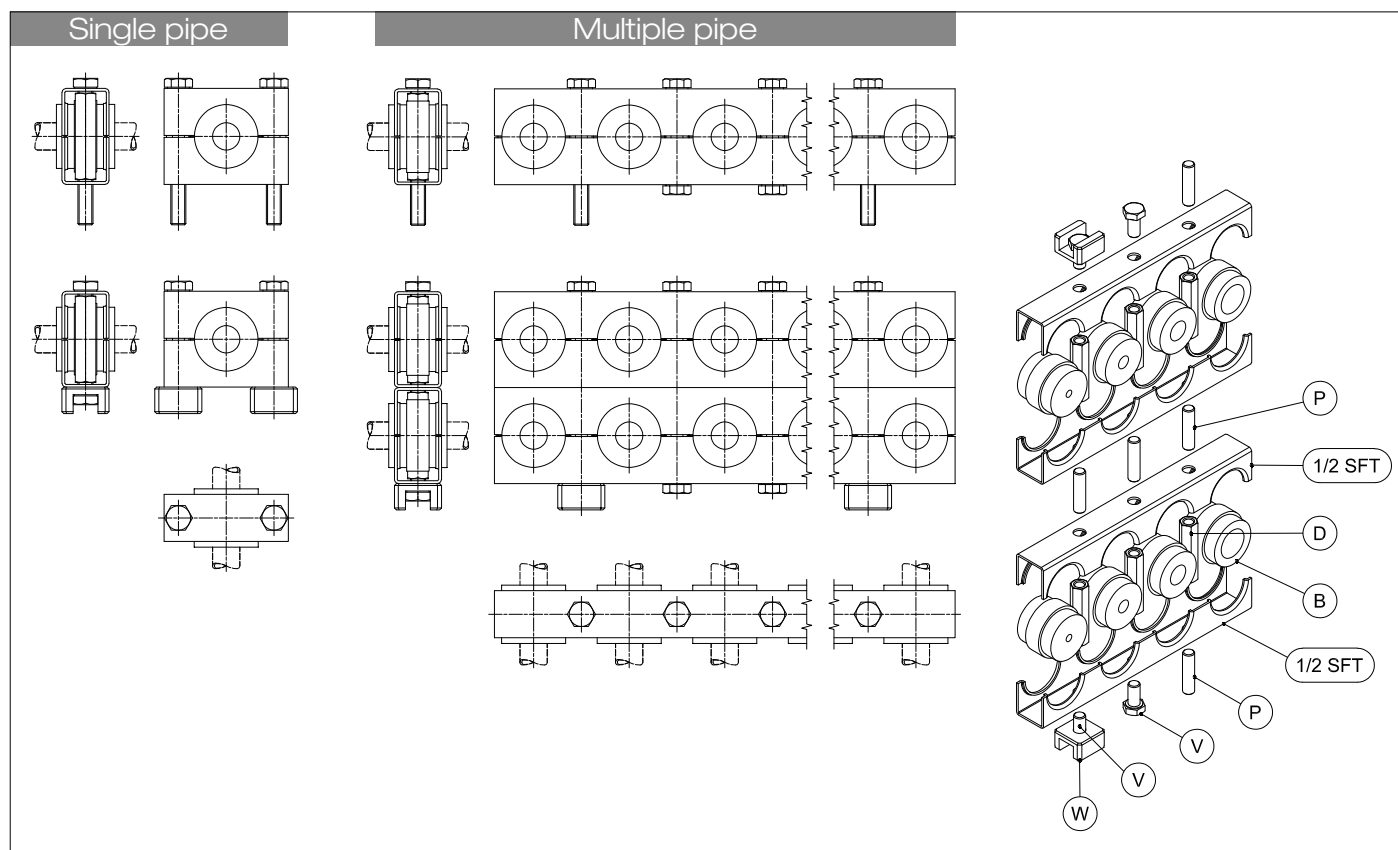
Multiple pipe



Size	A [mm]	ØD [mm]	H [mm]	I [mm]	J [mm]	K [mm]	L1 [mm]	L2 [mm]
38	25	8.7	38	38.1	15	34	56	982
51	25	8.7	51	50.8	21	46	66	956
78	41	11.1	78	76.2	35	73	95	1213

SFT MULTIFIX

Assembly



Designation & Ordering code

RUBBER BUSH

Configuration example : **B** **51** **1820**

Series

B Rubber bush

Size

38

51

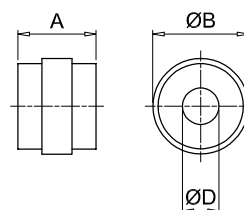
78

Pipe diameter

		38	51	78
6	Pipe Ø6 mm	•	•	
8	Pipe Ø8 mm	•	•	•
10	Pipe Ø10 mm - 1/8"	•	•	•
1214	Pipe Ø12 ÷ 14 mm - 1/4"	•	•	•
1516	Pipe Ø15 ÷ 16 mm - 3/8"	•	•	•
1820	Pipe Ø18 ÷ 20 mm - 1/2"	•	•	•
22	Pipe Ø22 mm - 5/8"		•	•
25	Pipe Ø25 mm - 3/4"		•	•
28	Pipe Ø28 mm		•	
2830	Pipe Ø28 ÷ 30 mm - 7/8"			•
33	Pipe Ø33 mm - 1"			•
3538	Pipe Ø35 ÷ 38 mm - 1 1/8"			•
42	Pipe Ø42 mm - 1 1/4"			•
50	Pipe Ø50 mm			•

B

Dimensions



Size	A [mm]	ØB [mm]
38	31	25
51	31	38
78	45	59

Pipe diameter	ØD [mm]	Ø nom. pipe [inch]
6	6	-
8	8	-
10	10	1/8"
1214	12÷14	1/4"
1516	15÷16	3/8"
1820	18÷20	1/2"
22	22	5/8"
25	25	3/4"
28	28	-
2830	28÷30	7/8"
33	33	1"
3538	35÷38	1 1/8"
42	42	1 1/4"
50	50	-

HEXAGON CONNECTION NUT

Configuration example : **D** **51** **M**

Series

D Hexagon connection nut

Size

38

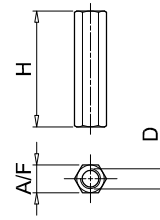
51

78

Screws

M Metric

U UNC



Size	Screws [mm]	D [mm]	H [mm]	A/F [mm]
38	M	M8	33	11
	U	5/16" UNC		
51	M	M8	46	11
	U	5/16" UNC		
78	M	M10	72	13
	U	3/8" UNC		

STUD BOLT

Configuration example : **P** **3851** **M**

Series

P Stud bolt

Size

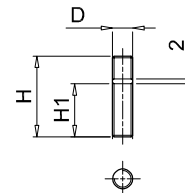
38 - 51

78

Screws

M Metric

U UNC



Size	Screws [mm]	D [mm]	H [mm]	H1 [mm]
38 - 51	M	M8	32	21
	U	5/16" UNC		
78	M	M10	38	22
	U	3/8" UNC		

HEXAGON HEAD SCREW

Configuration example : **V** **3851** **M**

Series

V Hexagon head screw

Size

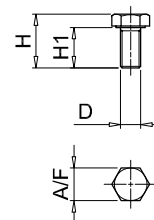
38 - 51

78

Screws

M Metric

U UNC



Size	Screws [mm]	D [mm]	H [mm]	H1 [mm]	A/F [mm]
38 - 51	M	M8	21	16	13
	U	5/16" UNC			
78	M	M10	36	30	17
	U	3/8" UNC			

WELDING FOOT

Configuration example : **W** **3851**

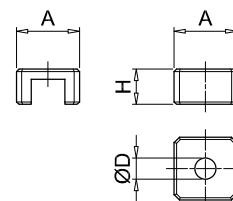
Series

W Welding foot

Size

38 - 51

78



Size	H [mm]	ØD [mm]	H [mm]
38 - 51	25	8.5	14
78	32	11	16

OB series

Cleaning covers



Technical data

Accessories

Cleaning covers

The pressure die-cast aluminium alloy cleaning covers offer superior mechanical strength and are manufactured to DIN 24339 standard. They provide easy access to the inside of the oil tank for inspection and cleaning purposes, without necessarily having to dismantle the unit. On request and also for small quantities inspection doors can be supplied with:

- customer logo
- hole cut for visual level indicator
- hole cut for visual and electrical level indicator
- oil sample plug

Compatibility with fluids

- Mineral oils types HH-LL-HM-HR-HV-HC, to ISO 6743/4 standard
- Water based emulsions types HFAE-HFAS, to ISO 6743/4 standard
- Water glycol type HFC, to ISO 6743/4 standard: ask for anodized version

OB275 and OB400 cleaning covers are designed according to DIN 24339.

Materials

- Cleaning covers: Pressure die-cast aluminium alloy
- Seal: NBR 70 Shore A

Weight	with seal	without seal
OB275	2.06 kg	1.76 kg
OB350	2.10 kg	1.80 kg
OB356	2.10 kg	1.80 kg
OB400	3.20 kg	2.90 kg
OB475	3.70 kg	3.40 kg

Operating temperature

From -30 °C to +80 °C

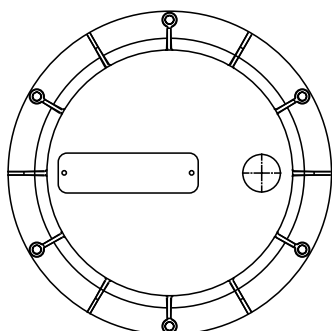


Designation & Ordering code

COMPLETE CLEANING COVER

Size
OB275
OB350
OB356
OB400
OB475

Available customization

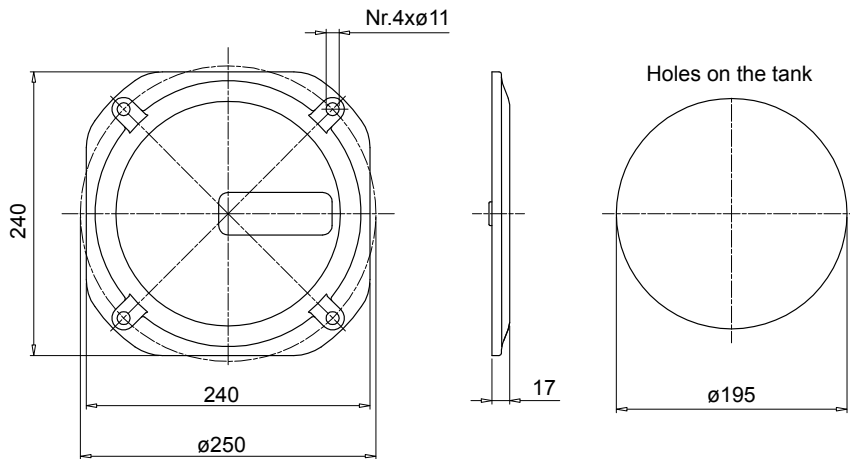


Nameplate with customer logo
Ordering information: **OB475LOGOP05**

The nameplates applied to the new inspection door are identical to those applied to the old door. The difference with the new door is that nameplates are fixed with rivets.

For ordering information codes, minimum order quantities, fixing hole positions and other details not indicated in this publication, contact MP Filtri Technical and Sales Department.

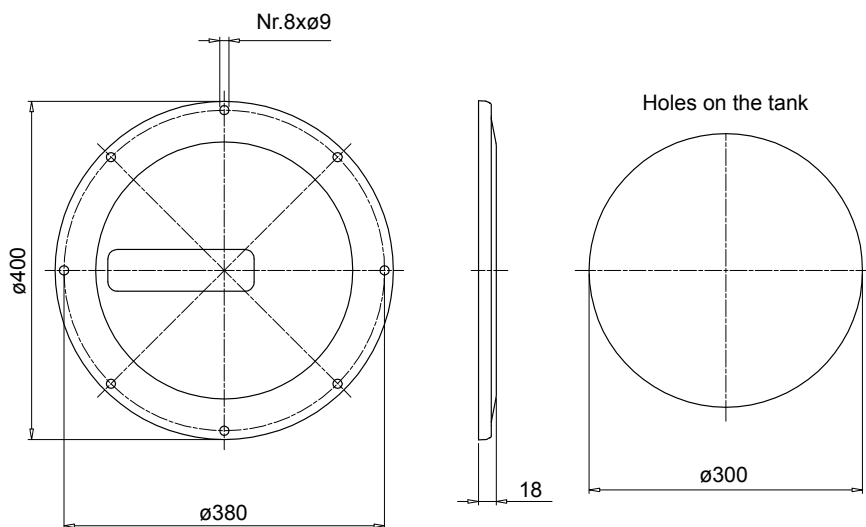
OB275



Code	Description	Seal
OB275P01GN	Door with MP Logo	NBR
OB275P02GN	Blank cover	NBR
OB275P01GV	Door with MP Logo	FPM
OB275P02GV	Blank cover	FPM

Code	Description
OB275P01	Door with MP Logo
OB275P02	Blank cover
GU0275NBR	Seal
GU0275VTN	Seal

OB400



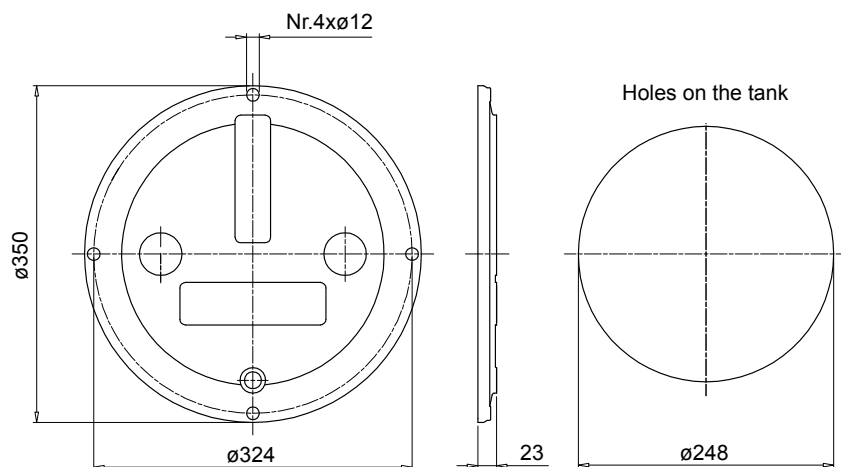
Code	Description	Seal
OB400P01GN	Door with MP Logo	NBR
OB400P02GN	Blank cover	NBR
OB400P01GV	Door with MP Logo	FPM
OB400P02GV	Blank cover	FPM

Code	Description
OB400P01	Door with MP Logo
OB400P02	Blank cover
GU0400DINNBR	Seal
GU0400DINVTN	Seal

OB OB350 - OB356 - OB475

Dimensions

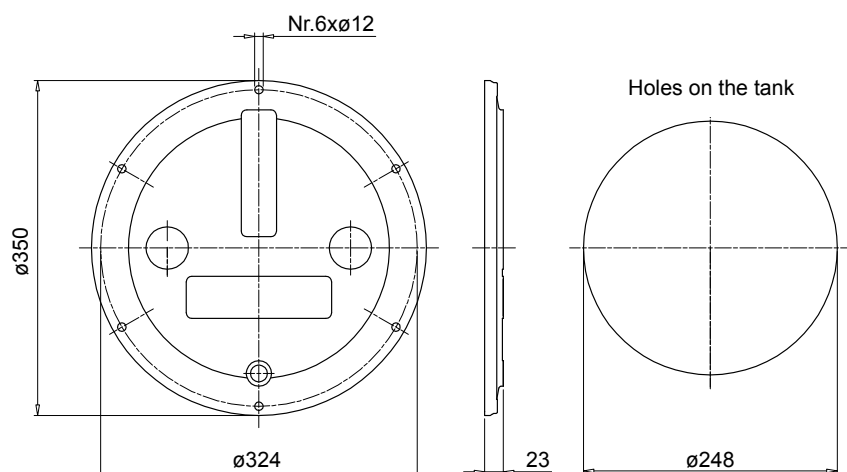
OB350



Code	Description	Seal
OB350P01GN	Door with MP Logo	NBR
OB350P02GN	Blank cover	NBR
OB350P01GV	Door with MP Logo	FPM
OB350P02GV	Blank cover	FPM

Code	Description
OB350DIN000	Door
GU0350DINNBR	Seal
GU0350DINVTN	Seal

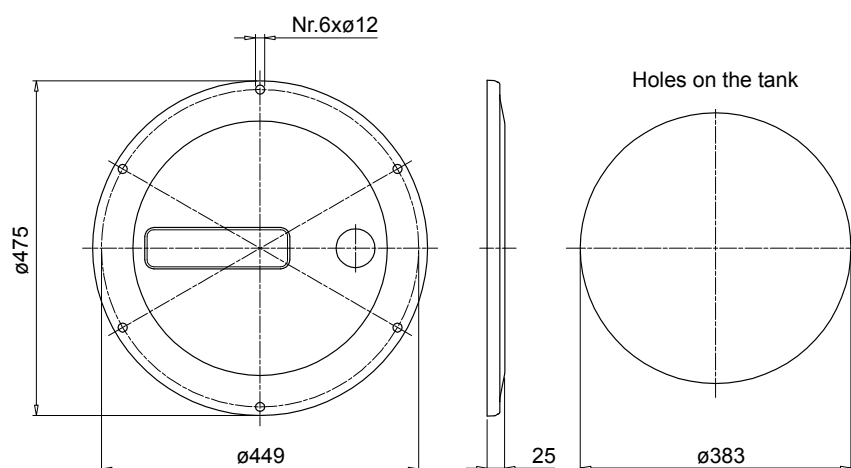
OB356



Code	Description	Seal
OB356P01GN	Door with MP Logo	NBR
OB356P02GN	Blank cover	NBR
OB356P01GV	Door with MP Logo	FPM
OB356P02GV	Blank cover	FPM

Code	Description
OB356DIN000	Door
GU0350DINNBR	Seal
GU0350DINVTN	Seal

OB475



Code	Description	Seal
OB475P01GN	Door with MP Logo	NBR
OB475P02GN	Blank cover	NBR
OB475P01GV	Door with MP Logo	FPM
OB475P02GV	Blank cover	FPM

Code	Description
OB475P01	Door with MP Logo
OB475P02	Blank cover
GU0475DINNBR	Seal
GU0475DINVTN	Seal

The drawing shows a circular component with a central rectangular hole and a vertical slot. The outer ring has eight small circular features. A side view on the right shows the component's profile, including a central rectangular feature and a vertical slot.

Technical drawing of a 100mm diameter, 14mm high, G 1 1/4 inch threaded cap. The drawing shows a side view and a top view. The side view indicates a total height of 14mm and a base diameter of 51mm. The top view shows a hexagonal base with a diameter of 42mm (A/F 42) and a central threaded hole with a diameter of 1 1/4 inches (G 1 1/4").

Note: Arrange the holes according to the position of the level indicator

SE10LT series

Aluminium tanks



SE10LT GENERAL INFORMATION

Technical data

Aluminium tanks

With 10 litres capacity, MP Filtri aluminium tank SE10LT allows the assembly of a compact hydraulic power unit.

Made of pressure die-cast aluminium alloy, these tanks feature superior strength and optimum design and are ideal for compact hydraulic power units.

Generously proportioned fins ensure efficient cooling.

The tank is supplied with:

- M6 threaded fixing holes for lid
- feet with M8 threaded fixing holes
- G 3/8" threaded drain hole

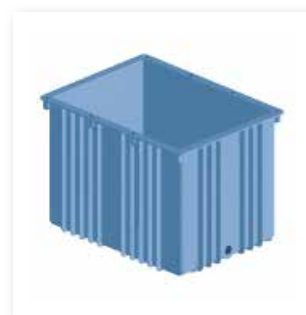
The lid is sealed by a gasket made of special paper, which must be ordered separately indicating code "GUS 10.0".

Material

Pressure die-cast aluminium alloy

Weight

SE10LT 4 kg



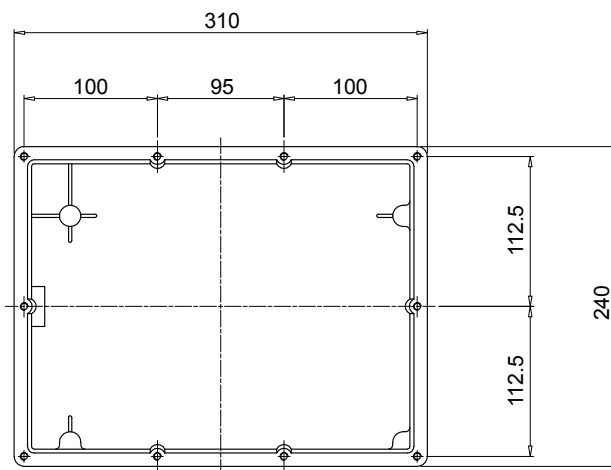
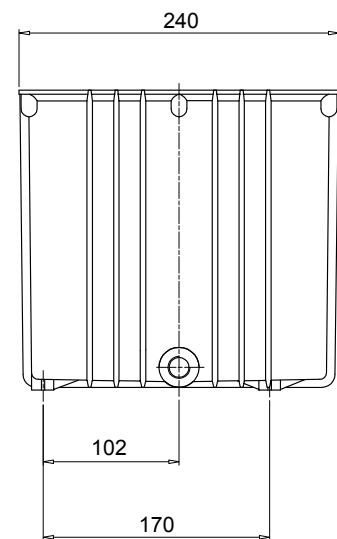
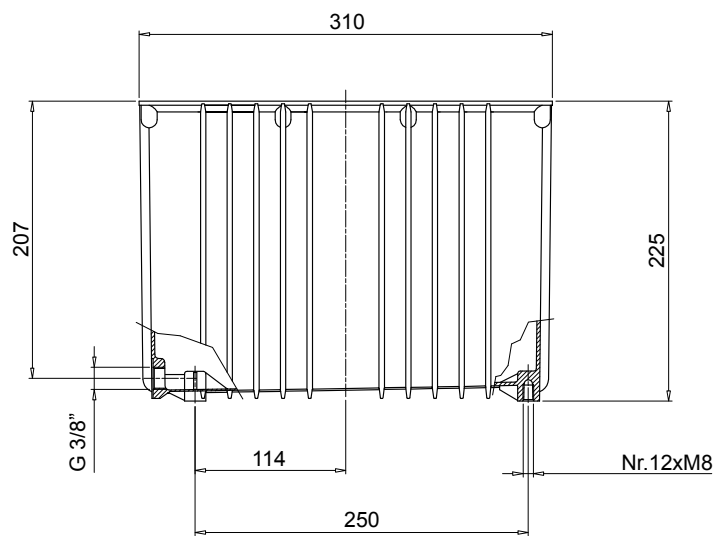
Designation & Ordering code

SE10LT

Size

SE10LT

SE10LT



All data, details and words contained in this publication are provided for information purposes only.
MP Filtri reserves the right to make modifications to the models and versions of the described products at any time
for both technical and / or commercial reasons.
The colors and the pictures of the products are purely indicative.
Any reproduction, partial or total, of this document is strictly forbidden.
All rights are strictly reserved.



WORLDWIDE NETWORK

HEADQUARTERS

MP Filtri S.p.A.
Pessano con Bornago
Milano
Italy
sales@mpfiltri.com

BRANCH OFFICES

ITALFILTRI LLC
Moscow
Russia
mpfiltrirussia@yahoo.com

MP Filtri Canada Inc.
Concord, Ontario
Canada
sales@mpfiltricanada.com

MP Filtri France SAS
Lyon
AURA
France
sales@mpfiltrifrance.com

MP Filtri Germany GmbH
St. Ingbert
Germany
sales@mpfiltri.de

MP Filtri India Pvt. Ltd.
Bangalore
India
sales@mpfiltri.co.in

MP Filtri (Shanghai) Co., Ltd.
Shanghai
P.R. China
sales@mpfiltrishanghai.com

MP Filtri SEA PTE Ltd.
Singapore
sales-sea@mpfiltri.com

MP Filtri U.K. Ltd.
Bourton on the Water
Gloucestershire
United Kingdom
sales@mpfiltri.co.uk

MP Filtri U.S.A. Inc.
Quakertown, PA
U.S.A.
sales@mpfiltriusa.com

PASSION TO PERFORM



mpfiltri.com