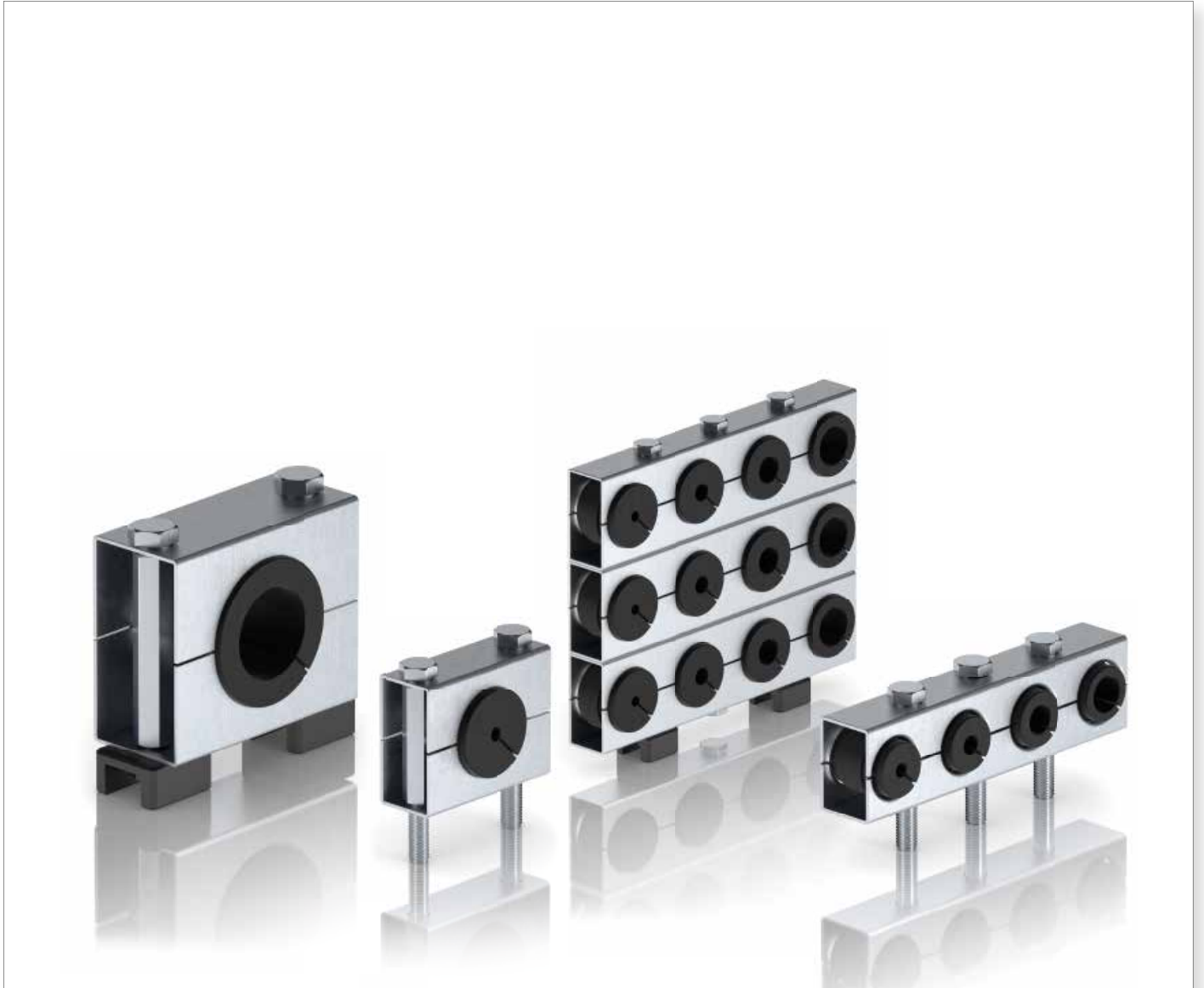


MULTIFIX SFT series

Fixing clamps



Technical data

Accessories

Fixing clamps

MULTIFIX fixing clamps are particularly suitable when a series of pipelines must be installed requiring neat and high precision installation. These brackets make it possible to install various pipelines of different types and diameters, rapidly, easily, and, more importantly, economically.

MULTIFIX clamps support, guide, and absorb impact and vibration, protecting the pipes and dispensing with the need for complex and unsightly mounting systems with angle clamps etc.

An orderly layout facilitates maintenance resulting in significant savings in running costs; it also allows intuitive visual design of the plant, which can be assembled easily even without specialised labour.

Materials

- Pair of brackets: Galvanized steel
- Bush: NBR
- Spacer: Steel
- Studs: Steel
- Screws: Steel
- Foot and screw: Steel

Weight

SFT 38 1	0.050 kg
SFT 51 1	0.100 kg
SFT 78 1	0.570 kg

Operating temperature

From -25 °C to + 100 °C



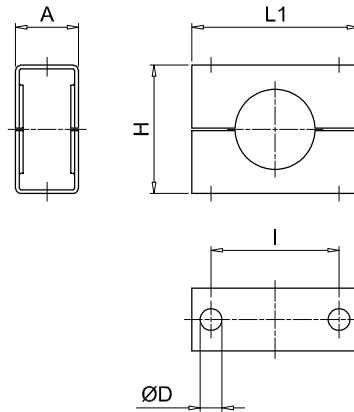
Designation & Ordering code

COMPLETE FIXING CLAMP

Serie	Configuration example :			SFT	51	19	P01	
SFT								
Size								
38	Height 38 mm - 1 1/2"							
51	Height 51 mm - 2"							
78	Height 78 mm - 3"							
Number of pipe	38	51	78					
1	Single pipe	•	•	•				
16	Nr. 16 pipes			•				
19	Nr. 19 pipes		•					
26	Nr. 26 pipes	•						
Execution								
P01	MP Filtri standard							
Pxx	Customized							

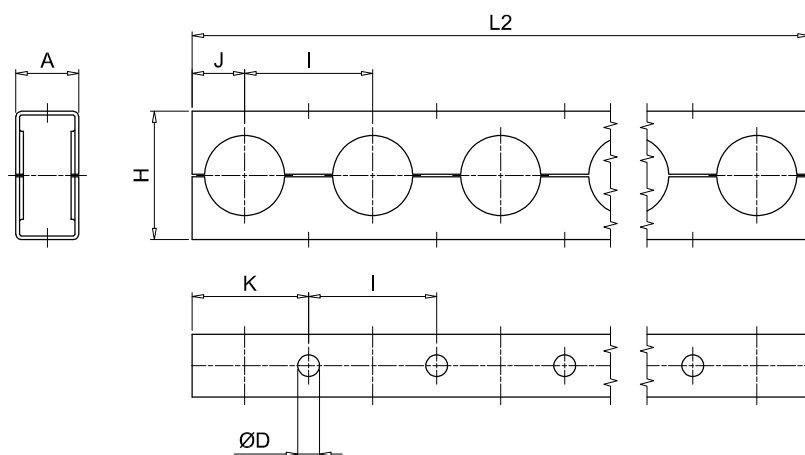
SFT

Single pipe



SFT

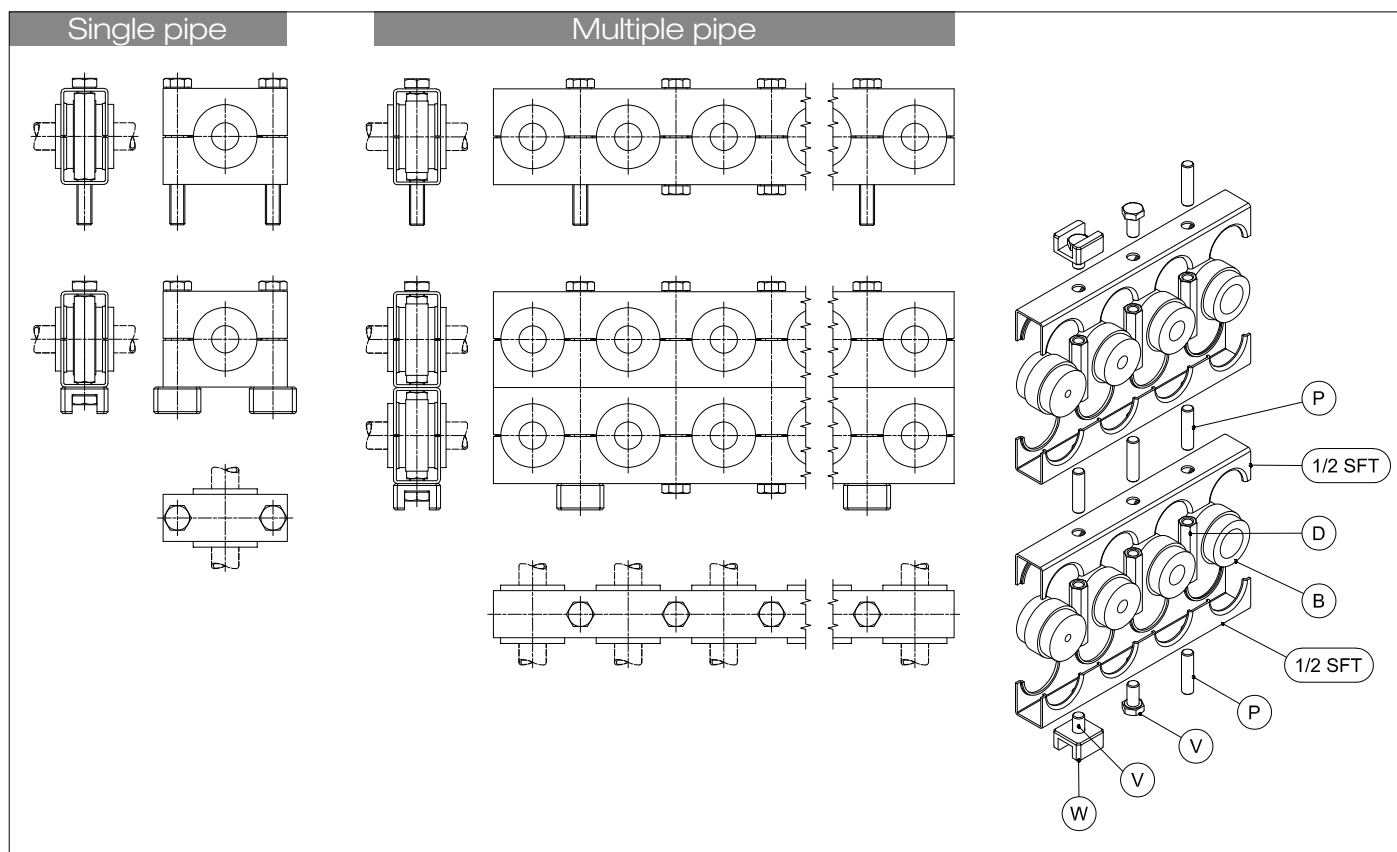
Multiple pipe



Size	A [mm]	ØD [mm]	H [mm]	I [mm]	J [mm]	K [mm]	L1 [mm]	L2 [mm]
38	25	8.7	38	38.1	15	34	56	982
51	25	8.7	51	50.8	21	46	66	956
78	41	11.1	78	76.2	35	73	95	1213

SFT MULTIFIX

Assembly



Designation & Ordering code

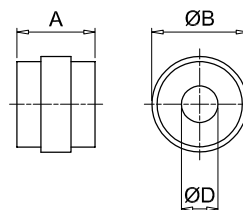
RUBBER BUSH

Configuration example: **B** | **51** | **1820**

Series	B Rubber bush
Size	38 51 78

Pipe diameter	38	51	78
6 Pipe Ø6 mm	•	•	
8 Pipe Ø8 mm	•	•	•
10 Pipe Ø10 mm - 1/8"	•	•	•
1214 Pipe Ø12 ÷ 14 mm - 1/4"	•	•	•
1516 Pipe Ø15 ÷ 16 mm - 3/8"	•	•	•
1820 Pipe Ø18 ÷ 20 mm - 1/2"	•	•	•
22 Pipe Ø22 mm - 5/8"		•	•
25 Pipe Ø25 mm - 3/4"		•	•
28 Pipe Ø28 mm		•	
2830 Pipe Ø28 ÷ 30 mm - 7/8"			•
33 Pipe Ø33 mm - 1"			•
3538 Pipe Ø35 ÷ 38 mm - 1 1/8"			•
42 Pipe Ø42 mm - 1 1/4"			•
50 Pipe Ø50 mm			•

Dimensions



Size	A [mm]	ØB [mm]
38	31	25
51	31	38
78	45	59

Pipe diameter	ØD [mm]	Ø nom. pipe [inch]
6	6	-
8	8	-
10	10	1/8"
1214	12÷14	1/4"
1516	15÷16	3/8"
1820	18÷20	1/2"
22	22	5/8"
25	25	3/4"
28	28	-
2830	28÷30	7/8"
33	33	1"
3538	35÷38	1 1/8"
42	42	1 1/4"
50	50	-

HEXAGON CONNECTION NUT D

Configuration example: **D** **51** **M**

Series

D Hexagon connection nut

Size

38

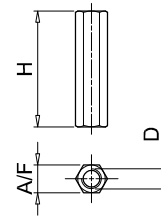
51

78

Screws

M Metric

U UNC



Size	Screws [mm]	D [mm]	H [mm]	A/F [mm]
38	M	M8	33	11
	U	5/16" UNC		
51	M	M8	46	11
	U	5/16" UNC		
78	M	M10	72	13
	U	3/8" UNC		

STUD BOLT P

Configuration example: **P** **3851** **M**

Series

P Stud bolt

Size

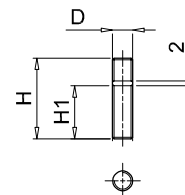
38 - 51

78

Screws

M Metric

U UNC



Size	Screws [mm]	D [mm]	H [mm]	H1 [mm]
38 - 51	M	M8	32	21
	U	5/16" UNC		
78	M	M10	38	22
	U	3/8" UNC		

HEXAGON HEAD SCREW V

Configuration example: **V** **3851** **M**

Series

V Hexagon head screw

Size

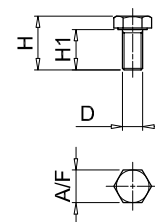
38 - 51

78

Screws

M Metric

U UNC



Size	Screws [mm]	D [mm]	H [mm]	H1 [mm]	A/F [mm]
38 - 51	M	M8	21	16	13
	U	5/16" UNC			
78	M	M10	36	30	17
	U	3/8" UNC			

WELDING FOOT W

Configuration example: **W** **3851**

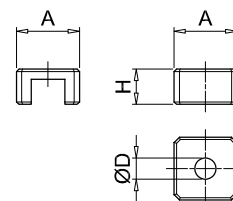
Series

W Welding foot

Size

38 - 51

78



Size	H [mm]	ØD [mm]	A [mm]
38 - 51	25	8.5	14
78	32	11	16