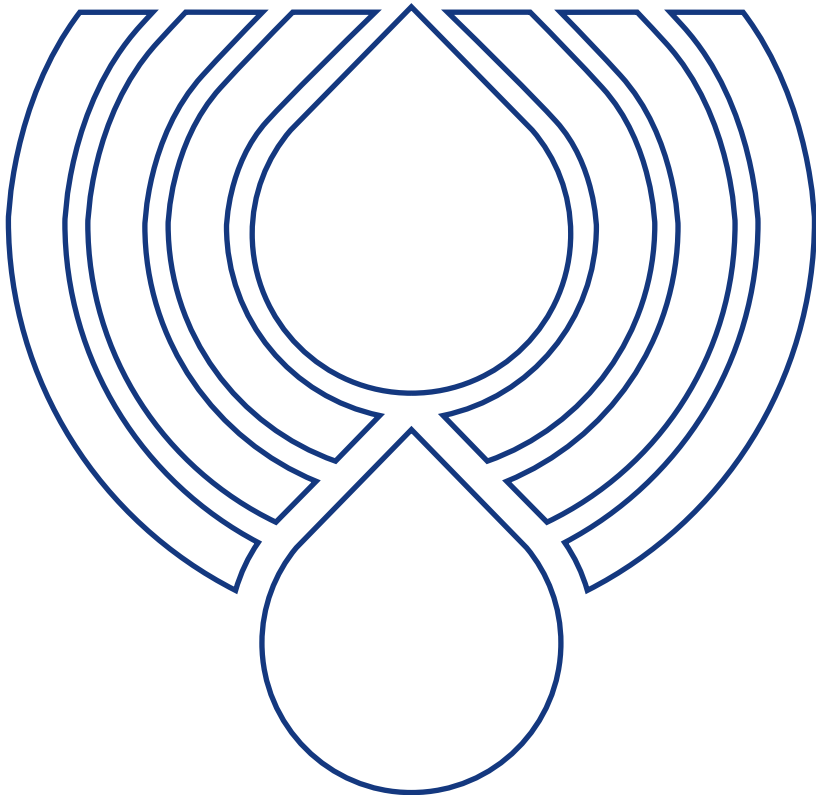


Tank Accessories



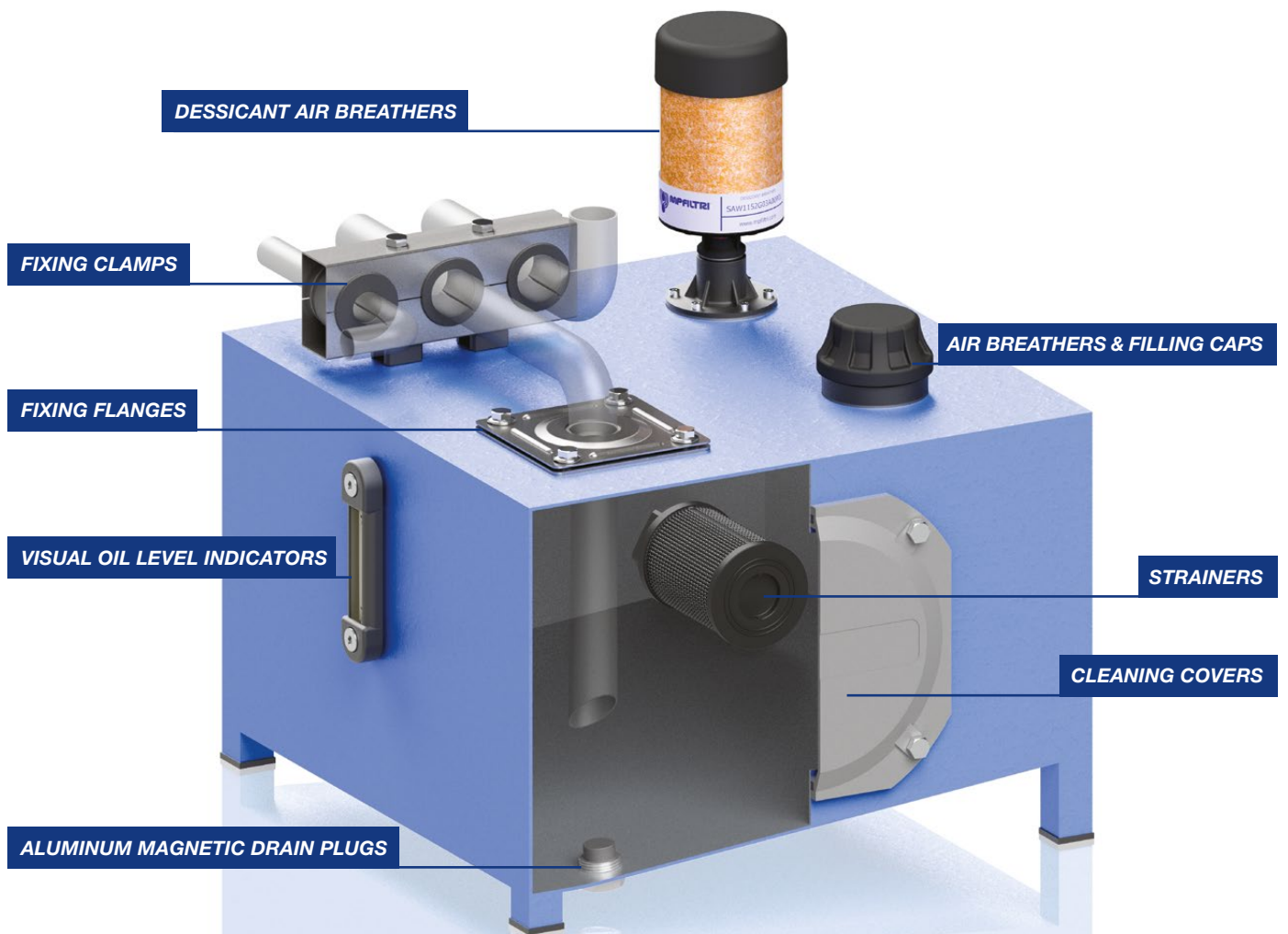
PASSION TO PERFORM



TANK ACCESSORIES

The complete range of MP Filtri tank accessories for hydraulic circuits is composed of: breather filters, filler and breather filters, filler caps, visual and electrical level indicators, pressure gauges selectors, flanges for fixing the oil tubes on the tank cover and inspection doors. In particular,

filler and breather filters have a dual function at the tank inlet: the filtration of the incoming air and the pre-filtration of the fluid through the basket in order to prevent the entry of foreign bodies during the filling or refilling operations.



STRAINERS

Strainers are used as safety filters to protect pumps from gross contamination which can cause them to grip.



STR & MPA - MPM

Suction strainers

The most comprehensive range of strainers available in the marketplace, threaded connections from 3/8" to 3" BSP/NPT, with varying dimensions and micron ratings.

Flow rates up to 875 l/min (231 gpm).

Low cost suction strainer intank mounting with or without relief valve.

Available with magnetic column & Bypass options.

AIR BREATHER AND FILLER PLUGS

Breather filters are used to filter incoming air of hydraulic tanks and for filling hydraulic tanks with oil.

Available versions: pressurised, non-pressurised, threaded connection, welded and flange mounting with screws.



SAP054 - SAP075 - SA

Nylon air breather filters (SAP054-075)

Metal air breather filters (SA)

Threaded connection from 1/4" to 2 1/2". Flow rate up to 2500 l/min, filtration rating 3 and 10 µm.

They are usually directly fitted on the tank.

Common applications: mobile machines and industrial equipment.

Completely metal versions are particularly suitable for the industrial sector.

Replaceable filter element.



SAW115

Desiccant air breather filters

SAW115 breather units can be added to systems or can replace existing breathers using the SMG 1 adapter.

Available in three different sizes, max air flow up to 453 l/min (16 cfm).

Common applications: IBC tanks, Transformers, Storage Tanks in Hydraulics, Power Generation, Mining, Aviation, Storage, Manufacturing and Petrochemical applications.

Protection from moisture and particulate contamination in lubricant and equipment.

SCS

Air breather filters

Composed of spin-on type filter elements, with solder or flange connections, flow rate up to 1300 l/min, filtration rating 3 and 10 absolute µm or 10 nominal µm.

The use of spin-on type filter elements makes it easier to find spare parts.

They are usually directly fitted on the tank.

Common applications: mobile machines and industrial equipment.



SME1 - SMF1 - SML1

Tank accessories

Risers for installation of the breathers and filler caps in any place on the tank.

Common applications: mobile machines and industrial equipment. SME1 range: for tanks in the mobile sector, it increases the oil-air level space, avoiding the oil from drop out in case of sudden movement inside of the tank. SMF1 and SLM1 allow operators to mount the filler and vent plug on the tank wall instead of the top when the machine dimensions do not allow it.



TA46 - TAP50 - SAP50

Filling caps and air breathers

Flow rate up to 200 l/min with 3 and 10 μ m filter element. Available in small sizes, they are made of steel or nylon and are usually directly fitted on the tank.

Common applications: compact hydraulic systems. Possibility of mounting a pressurization valve on TAP50 and SAP50 versions.



TA80

Metal oil filler and air breather filler cap

Flow rate up to 550 l/min with 3 and 10 μ m filter element. They are usually directly fitted on the tank. Common applications: mobile machines and industrial equipment.

Available features: pressurisation valve and padlock tab.



TAP90

Nylon oil filler and air breather filler cap

Flow rate up to 550 l/min with 3 and 10 μ m filter element. They are usually directly fitted on the tank. Common applications: mobile machines and industrial equipment.

Available features: pressurisation valve, padlock tab and dipstick.



TAP114

Nylon oil filler and air breather filler cap

Flow rate up to 1600 l/min with 10 μ m filter element. They are usually directly fitted on the tank. Common applications: mobile machines.

Flow rate higher than the traditional filling caps. Replaceable filter element.

TAP115 & SAP115

Nylon air breather and filler plugs

Flow rate up to 3000 l/min with 3 and 10 μ m filter element. They are usually directly fitted on the tank. Common applications: mobile machines and industrial equipment. Comes with the options of mounting a clogging indicator, and filter element replacement if needed.

FILLER AND DRAIN PLUGS

Filler caps are installed into the fill port of hydraulic tanks.



TKT - TSD - TKM

Nylon filler caps (TKT)

Aluminium magnetic drain plugs (TKM)

Nylon oil filler and air breather filler caps (TSD)

They are usually directly fitted on the tank.

Common applications: compact hydraulic systems. Small sizes for mini power packs. Available features: antisplash to avoid fluid coming out through the tank, oil dipstick, air breather.

TKM version with integrated magnet allows the retention of ferrous particles present in the fluid.

TC50

Nylon filling caps and air breathers

They are usually directly fitted on the tank.

Common applications: compact hydraulic systems. Small sizes and available features: oil dipstick, antisplash to avoid fluid coming out through the tank.

VISUAL OIL LEVEL INDICATORS

Visual level indicators are used to monitor the level of fluid in hydraulic tanks.



LCP - LCC

Visual oil level indicators

Sight gauge for monitoring the fluid level within the tank.

They are directly fitted on the side of the tank.

Common applications: compact hydraulic systems. Small sizes.



LVA - LVU

Visual oil level indicators

LVA range with wheelbase up to 254 mm available in three sizes, to monitor the level of flow in the tank. LVU range with wheelbase up to 2000 mm available in various hole centre lengths. Possibility to apply a drain valve, to drop the oil.

Common applications for both series: mobile machines and industrial equipment.

ELECTRICAL OIL LEVEL INDICATORS

Visual/Electrical level indicators are used to monitor the level of fluid in hydraulic tanks.



LEN - LEG - LET - LEM - LEU

Electrical oil level indicators

Electromagnetic float level indicators use the action of a magnet fixed to the float to change the electrical status of a reed switch mounted inside the tube.

As the fluid level in the tank changes, the float moves together with the magnet that, connected with the reed switch, move the contacts thereby tripping an alarm signal.

Common applications: mobile machines and industrial equipment.

Wide range of lengths, in particular, flexible LEM version thanks to the possibility of variable lengths for any size up to 1000 mm.

LVK

Electrical and visual oil level indicators

Fully transparent oil level indicator with electrical control in the absence of oil.

Common applications: mobile machines and industrial equipment.

VARIOUS ACCESSORIES

Tank accessories complete the filter range for hydraulic power packs.



EM1

Gauge isolator valves

They are designed to protect pressure gauges from pressure shocks when the pressure reading is not required; after each reading setting the selector to the closed position serves to depressurise the pressure gauge by means of the T fitting connected to the reservoir.

Common applications: industrial equipment.



SVM

Gauge isolator valves

They are designed to protect pressure gauges from pressure shocks when the pressure reading is not required; after each reading setting the selector to the closed position serves to depressurise the pressure gauge by means of the T fitting connected to the reservoir. SVM gauge selectors allow pressure values from different parts of the system to be read using a single pressure gauge.

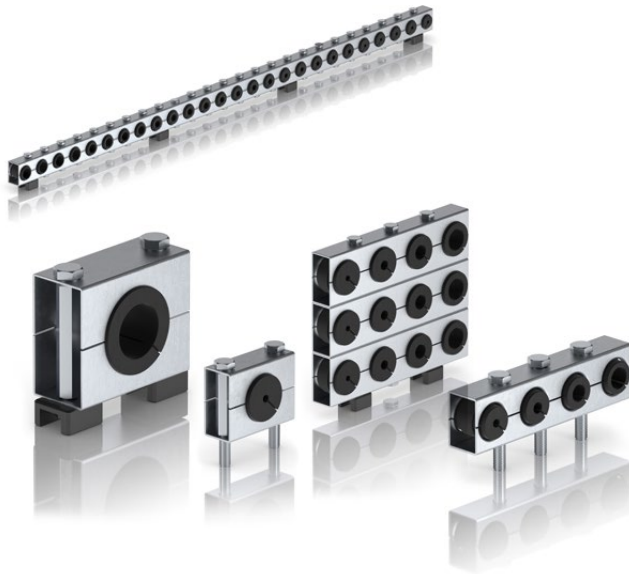
Common applications: industrial equipment.



FTA - FTR

Fixing flanges

Hose brackets with seal. Makes it possible to fix Suction and Return lines on the reservoir cover. Guarantee of tightness and orderly assembly. Common applications: mobile machines and industrial equipment.



SFT MULTIFIX

Fixing clamps

Fixing clamps suitable when neat and precise installation of a series of pipelines is required. Steel type is preferred to competition ones, plastic type can be used with both high or low temperature. Applications: mobile and fixed machinery.



OB

Cleaning covers

Common applications: industrial equipment. It can be supplied with customer logo and accessories such as filler cap or oil level indicators. Material: aluminium.



SE10LT

Aluminium tanks

Aluminium tanks are ideal for a compact hydraulic power unit. Lighter and cheaper than the classic aluminium tank.



WORLDWIDE NETWORK



HEADQUARTERS

8 BRANCHES

OVER 300 DISTRIBUTORS

Germany
France
USA
Russian Federation

China
United Kingdom
India
Canada



PASSION TO PERFORM